



# Driftwood

## Island Living Real Estate

SECTION

B

### Clayton celebrates 25 years at ArtCraft

Olive Clayton has been selling her creations at ArtCraft since the show began 25 years ago, and has been active artistically for 45 years.

"It's just something you like to do," she said from her Salt Spring home. "It's a compulsion. If I don't do it I feel as though I am gypped."

She started copper enamelling, which is her favourite creative outlet, 30 years ago while she lived in the Northwest Territories.

"It was very beautiful for three or four months in the summer but the winters were dreadfully long. It was a great place to develop arts and crafts because of the long winters and you couldn't go out that much."

Clayton lived in the Northwest Territories for 17 years.

There, she created a block print of musk-ox and caribou which was chosen by the National Gallery in Ottawa to hang in the gallery and travel in a show marking Canada's 1967 Centennial.

She considers that print to be her biggest artistic achievement.

"One has a few small triumphs," she said. "I suppose it is an honour to be hung in a place like the National Gallery."

While living in the Territories she travelled to locales such as Banff and Mexico to take courses in art and fabric design.

By the time ArtCraft began in 1968, Clayton was a recent arrival to Salt Spring, having landed here 1967 after her husband retired. She exhibited and sold her work that year and has sold something at ArtCraft every year since.

She has contributed enamel pendants and coasters, silk painted hangings and block printing to ArtCraft over the years, many created in her studio at home.



ARTIST B8

**LOCAL ARTIST, NATIONAL RECOGNITION:** Olive Clayton displays the block print she created that hung in the National Gallery in Ottawa. Clayton has sold her art work at ArtCraft for 25 years.

Driftwood photo by Ian Noble

### Creating future most wanted

*Second of Two Parts*

If we are to consciously create the future we most want, we need to fashion a vision of the kind and quality of life and place we want Salt Spring to be 20, 50, 100 years from now.

By BRUCE ELKIN  
*The Earthways Institute*

We also need to ground that vision in a clear, objective and accurate assessment of current reality. Doing so will set up a creative dynamic in which we can take action which will move us, step-by-step, toward the realization of our vision and the future we most want.

Creating neither solves, nor ignores problems and circumstances. Rather it transcends them in favour of clearly envisioned, tangible outcomes. Creating is "driven by vision, rooted in reality, and focused on results." We still have problems, but they are no longer the driving force behind our actions. Vision is.

#### Developing vision

Shared vision arises out of personal vision. To fashion a personal vision, start with a general sense of what you'd like, then crystallize it into a clear, focused picture of what your result would look like fully completed.

Start by imagining how you would like your future to be. Ask yourself questions like these:

- What really matters to me? What do I care about?
- What kind of community do I truly want to live in? What would I feel like living in it?
- What kind of island and community do I want to give to my children and grandchildren?
- What do I want the environment to look like? The economy? The government? The transportation system? The towns and villages?

Don't limit yourself by what

FUTURES B2



Your weekly guide to  
**GULF ISLANDS PROPERTIES**

Compliments of:



# ISLAND LIVING

## CREATING THE FUTURE

From Page B1

you think is possible or realistic. Imagine that whatever you want is possible, and focus on what you most want. Concepts are fine at first. Then, gradually focus your ideas into a clear, compelling vision — one that you could recognize if you created it.

Focus sets limits and generates power. You focus by specifying. For example, a concept like "an appropriate transportation system," can be crystallized into something like "pedestrian ferries to Ganges and Fulford, solar powered buses plying the main roads with mini-buses connecting with them from outlying areas; and extensive network of bicycle paths large enough to accommodate bikes with trailers and small electric powered carts, solar powered electric hoists for bikes and carts in hilly terrain, and an extensive network of walking paths throughout the island.

To establish a clear vision you need to:

- Separate what you want from what you believe is possible. Do not limit yourself to what you think is possible or realistic. There is a place in the creative process for realism, but not in creating a vision. A vision is a statement of what you truly want — whether or not it is realistic or even possible.

Artists, inventors, scientists, and athletes all work toward visions without knowing if they are possible. Neither Van Gogh nor the Wright Brothers knew if what they wanted was possible. They just knew they wanted it more than anything else.

Along the way creators do set realistic steps for themselves, but vision itself does not have to be realistic. It has more power if it is truly visionary. Go for what truly matters.

- Focus on the end result, not the process of getting it. Don't worry about how you will achieve your vision until you are clear about what you want. Don't worry, at first, about the costs, the politics, the technology to do it. It is just fine to have a vision of something you don't yet know how to create. Creating is a learning process, you'll learn what you need.

- Include all of what you want in our vision. Make sure your vision includes all aspects of what you want. If you want a healthy environment, and you want a healthy economy include them both in your vision. If you want privacy, and you want community, include both.

For example a woman wanted a recycling system for her home office, but couldn't get around to putting it in place. When asked, "would you take it if you got it," her answer was, "only if it's easy to use."

So she revised her vision to specify "a simple, effective and easy-to-use recycling system." She had it in place within one month and it has become an essential part of her life.

To be effective as a driving force, vision must be clearly specified, independent of current circumstances, possibilities, and processes, and include all of what you want.

When individuals clearly specify visions, they are able to join with others to co-create mutual vision. When people align around a common and compelling vision and are willing to work together that vision can:

- (a) convert reaction into creative action; (b) convert fatalism and apathy to hope; (c) promote collaboration over competition; and (d) encourage a whole system rather than a problem-solving approach to change.

But, vision alone is not enough. Vision not rooted in reality is just wishful thinking. To have power, vision must be embedded in the creative dynamic. To set up such a framework, you must also be clear about current reality.

**Clarifying current reality**  
Current reality includes a clear and accurate description of where you are now in relation to your vision. Knowing where you're starting from is critical, it gives you a firm foundation on which to move toward where you want to end up.

To establish current reality, simply observe your circumstances objectively and accurately: i.e., tell your self the truth about what you are doing and what is happening, including what you are saying to yourself or others about both.

To assess current reality, ask yourself questions like these:

- What do I currently have in relation to the result I want? Where am I now?
- What is really happening? What forces in play support my vision? Which do not?
- What am I telling myself, and others, about current reality?
- What don't I know about the current situation?
- What aspects of my vision are already in place? What gaps exist?

- What resources, strengths, contacts, supports do I have? What weaknesses, and limitations?

Simply describe reality without exaggeration or distortion; don't make it better or worse than it seems. Refrain from judging, generalizing or "editorializing."

That the hole in the ozone has increased by 15 per cent over the past 12 months is a description of current reality. "We only have 10 years to solve the ozone problem or the damage will be irreparable," is a judgement about reality.

The last statement is not a description of what is actually happening. It is a prediction. These kinds of statements are often made up to shock or frighten — compel — people into action by increasing the intensity of an issue.

But this kind of tactic often backfires. Rather than mobilize us to action, it leads to despair, hopelessness and inaction. Statements like "fascist bureaucrats are trying to destroy the market," or "masses of people will suffer salmonella poisoning if they eat Thai food un-sanctioned by the CRD" help vent indignation and anger, or bolster shaky positions, but they are far from objective and accurate descriptions of current reality.

And statements like "it's impossible to make any changes," or "there is nothing I can do," are also not accurate descriptions of current reality. They too, are judgements, based on generalizations.

This is not nit-picking semantics. Language maps reality. If your language is inaccurate, so is your map. You are not likely to end up where you want if you use a faulty map. When assessing current reality be careful your descriptions do not contain absolute words like never, always, totally, completely, impossible.

Take care to avoid these kinds of words, or to qualify them in phrases like sometimes, almost always, mostly, etc . . . Remember, don't judge — describe!

Finally, it is important to look at current reality continuously. Reality changes. Don't assume it remains the same as it was last time you looked. Keep your observations of reality up to date. Current reality means current.

In Part Three, we'll examine how current reality, when held together with a clear, compelling vision, can set up a dynamic framework for creating results you truly want.

## FIVE STAR MOVING

- your local moving specialists -



- \* Regular trips to Vancouver & Victoria
- \* Friendly, reliable & professional \* Owner/operated
- \* Fully licensed & insured \* Reasonable rates

Our reputation is everything to us.  
We care about giving you 100% satisfaction!

CALL RANDY  
537-9501

## "NEW LISTING"

OPEN HOUSE



OPEN FROM 1:00 PM to 4:00 PM  
SAT. & SUN. - AUG. 8 & 9

YOU SIMPLY MUST SEE THIS!

A walk through this 2 storey lakeview home will make you want to stay forever. Gaze over St. MaryLake from the dining room. Relax in the large high-ceilinged living room with wood floors. A modern kitchen with new modular shelving makes meals a breeze. 4 bedrooms, with an atrium leading from the master. Etc! Etc! Too many extras to mention.

\$210,000 MLS



JANET MARSHALL  
537-5359



GEORGE PUHARICH  
537-9111



Islands Realty Ltd.  
537-9981 (24 hrs)  
Box 454, Ganges B.C. V0S 1E0

Each Office Independently Owned and Operated



100%  
WATERFRONT

Protected, convenient, private Islands. Deadman Islands, situated right in Ganges Harbour, offer it all.

- \* Sunning Rock - .30 acre
- \* Audrey Island - 3 acres
- \* Little Audrey - .50 acre

OFFERED AT \$1,200,000  
Please Call Shirley Marshall  
at 468-7626 Fax: 468-7673



FAIRWINDS REALTY LTD.  
Box 118, Nanoose Bay,  
B.C. V0R 2R0



Whether your new home will be a striking statement of your personal taste or a typical rancher in the West Coast style, choosing the right designer is very important to the final result. Combining your ideas with our more than 30 years experience in Custom Home Design is your best assurance of achieving your dream as you want it to be. We'll be happy to discuss your plans without obligation.

Call BILL MONAHAN.....537-4290

**THE OMEGA DESIGN TEAM**

SALT SPRING ISLAND

P.O. BOX 63 GANGES, B.C. V0S 1E0



**RE/MAX**  
Realty of Salt Spring



**FAMILY HOME!** Close to village, .93 acre, 4 bdrm., separate dining rm., newly carpeted, woodstove, play house. \$162,500



**CUSTOM BUILT!** Quality family home, 1.89 ac. features 3 bdrms., 2 1/2 baths, 2 offices, workshop, greenhouse. Sea-views, southern exposure, very private \$257,500



**FERNWOOD HOBBY FARM**  
2.74 ac., fenced pasture, orchard, sheep pen, greenhouse, sea-view, 2 bdrm. rancher, new double garage, workshop, plus guest trailer, walk to beach. \$180,000



**GARDENERS PARADISE!**  
Lovely cared for 2400 sq. ft. home with self contained inlaw accommodation in sunny Vesuvius. South exposure .46 acre with beautiful mature garden close to a lovely beach access. \$215,000

LIANE READ & PAUL GREENBAUM  
537-4287 537-5064

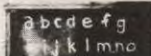


Pager 388-6275  
#1042  
Cellular:361-5707

RE/MAX  
SALT SPRING, BOX  
1022 GANGES B.C.



Most people think there's only one way



Call us at  
1-800-661-CODE

ISLAND LIVING

# Couple discovers name is not really their own

It is so easy to lose a name. You get used to your own name and it comes hard to learn that you had the wrong name all your life.

We called them Grandpa and Grandma Chadburn. Not because we shared the same ancestry but because my twin brother and I were just starting out in life and the old couple were reaching the end of the same road. As grandparents they were courtesy cousins.

The Chadburns were weekly visitors at my mother's house. One afternoon a week she spent two or three hours reading to them. I learned to enjoy Edgar Wallace by listening to Mother reading aloud.

Mrs. Chadburn was almost blind and could no longer read, while her husband was illiterate. Born in the middle of the 19 century to a rural household, he had never attended school.

The name of Chadburn was part of my childhood. Almost without fail for several years they walked the mile or so from their home for this link with the realm of romance. Thrillers and mystery stories, historical romances, all was grist to their hungry mill.

Today, nearly 70 years later, I can recall them by association.

## To be Frank RICHARDS



Mrs. Chadburn had a treadle sewing machine in her living room and she was quite content to have us pedal it up to unprecedented speeds while mother looked on rather fearfully. Soft-spoken and constantly smiling, she was a loving and caring woman.

Mr. Chadburn was a farm labourer who had been laid off when he suffered a hernia, or as he termed it, a "rupture." Without skills of any kind beyond growing things, he was unable to earn a living and I still don't know how they kept themselves.

His great attraction to us was his lack of teeth. He hadn't a tooth in his head and usage had taught him to eat a wide variety of food on his toughened-bare gums.

His cheeks would fold into themselves as his gums came together and Bill and I spent many

hours trying to imitate the process. We never did. Our teeth got in the way.

In the course of the years the Chadburns were no longer able to live on their own and to keep up a three storey house. In order to gain assistance they went to the city offices to register a claim for help.

To their consternation they learned that their name was not Chadburn. In fact, they were assured by a pompous ass in the office that there was no such name as Chadburn and that their name was, properly, Chapman.

Born Chadburn, married as Chadburn, lived together as Chadburn, they were no longer Chadburn.

For the remainder of their lives they were Mr. and Mrs. Chapman.

TO BE FRANK B5

### HUNGRY FOR A VIEW? SEE THIS VIEW & WET YOUR APPETITE!

SAVOUR ACTIVE PASS, MOUNT BAKER from this 3 + bdrm. home with workshop. ONLY \$233,900



#### CHEAPER THAN RENT

1.04 ACRE LOT Trim the trees & expand the views \$73,500

#### VIEW LOT \$73,500

104 ACRES Active Pass views Trim those trees!

#### 10 SUNNY, ARABLE, PRIVATE ACRES



#### OCEAN & MTN. VIEWS

BONUS: GETAWAY COTTAGE \$149,900

#### NEW ACREAGES CLOSE TO TOWN:

##### W/BARN WORKSHOP

\* 1.5+ acres  
\* 4gpm well 175'  
\* roughed in driveway \$75,000

##### CREEK & PASTURE

\* 9+ sunny acres  
\* zoning allows subdivision  
\* winter pond \$129,000

#### INCREDIBLE VIEWS JAPANESE THEME:

##### COURTYARD ENTRY GARDEN

\* 60 ft. of glass walls  
\* in-law-suite potential  
\* absolutely sparkling  
\* experience the elegance! \$398,000



Call Jan Macpherson 537-9894 (H) 537-5553 (24 Hrs)

CHAR CREEK HOUSE REALTY LTD.



RECYCLE THIS PAPER

# CHAR CREEK HOUSE REALTY LTD.

#### CHANNEL RIDGE



Beautiful seaview lot 1 acre in size. Excellent area, quiet cul-de-sac location, easy access. Great value. \$81,500.

#### SOUTHEY BAY



- \* Prestigious quiet area
- \* Steps to water
- \* Mooring buoy in place
- \* Septic system in place
- \* 1.43 acres
- \* Community water
- \* For boaters, NOTHING COMPARES

Small cabin for weekend get aways or live in while you build. \$285,000.

CALL MIKE HARDY

#### ACREAGES

2 level, arable acreages of approximately 5 acres each. Driveways, water, bldg. site & meadows are established. Also, well treed & sunny. The absolute nicest acreages available on the island. If you are looking for acreage with or without a view, do not miss these fine properties. Call Mike for more info.

#### BEST BUY



This 3 bedroom home enjoys seaviews from most rooms and lots of room for the family. Over 2,200 sq. ft., 3 bathrooms, family room & separate hobby room, storage & outside decks! Easy care, nearly new! \$242,900 MLS.

CALL MIKE HARDY

#### LOTS

- \$65,000 - 1.98 acres, close to town.
- \$67,500 - Corner lot, quiet street, easy to develop.
- \$69,000 - 1.69 acres, south exposure, serviced.
- \$94,000 - Beautiful seaview, Channel Ridge.

CALL TOM PRINGLE

#### 80 ACRE ESTATE



- \* Unparalleled views
  - \* Elegant contemporary home
  - \* Subdivision in process
- For details, call Allan Bruce.

#### NEW 3 BEDROOM



This home has an eyebrow dormer and an inglenook among other less exotic features such as leaded glass and double-sided fireplace, window seats, cherry wood kitchen cabinets, and more. Please call me for a showing. \$199,500 MLS.

CALL ALLAN BRUCE

#### SCOTT POINT WATERFRONT



Relax and enjoy the passing boats and marine life. Have pride in owning a solid home featuring vaulted ceilings, hot-tub/exercise room, double garage, deer-proof garden & much more. Asking \$398,500. Owner wants action!

CALL DICK TRORY

#### WATERFRONT CHARACTER HOME



4 bedroom, 3 bathrooms, 2 fireplaces. Large sundeck, hot tub and 4 car garage. Oak floors, windows, doors, staircase, wainscoting and mouldings. Sandy beach with dock & float. Park-like 1 3/4 acres. This property must be seen to be appreciated. \$529,000.

#### LAKE VIEW BUILDING LOT



Health permit in place. Pleasant parklike appearance. Sunshine, privacy, driveway, power, phone, cable, watermain. (No building restrictions). \$72,900 offers!

#### CALL DICK TRORY HOUSES

- \$110,000 - Great starter, landscaped, private.
- \$189,900 - Bright 3 bdrm. home, end of cul-de-sac.
- \$199,500 - Clean rancher on level lot, quiet street.
- \$239,000 - Family home, landscaped, many extras.

CALL TOM PRINGLE



MIKE HARDY 537-4520



ALLAN BRUCE 537-5722



JAN MACPHERSON 537-5553



DICK TRORY



MAGGIE SMITH



MEL TOPPING



TOM PRINGLE

# Back at the farm ... entertainment is word of the hour



*Driftwood photo  
feature by Derrick  
Lundy*



**FESTIVE FARM:** Festival on the Farm patrons got what they paid for, as a myriad of bands provided entertainment in country, bluegrass, folk, and rock music. Children had their own entertainment, with clowns, farm tours, horse and buggy rides and music to keep them smiling.





**Salt Spring Island  
Head Office**  
P.O. Box 454  
1101 Grace Point Square  
Ganges, B.C. V0S 1E0



Buying or selling, call us first

**537-9981**  
(24 Hours)

Each office is independently owned and operated

**Islands Realty Ltd.**



**SYLVIA GALE**  
Sales Rep.  
537-5618



**EILEEN LARSEN**  
Sales Rep.  
537-5067



**BECKY LEGG**  
Sales Rep.  
537-5870



**KERRY CHALMERS**  
Sales Rep.  
537-5823



**JANET MARSHALL**  
Sales Rep.  
537-5359



**PAT JACQUEST**  
Sales Rep.  
537-5650



**DARLENE O'DONNELL**  
Sales Rep.  
653-4386



**FINN**  
Sales Rep.  
537

**SALT SPRING PROPERTIES**



**LAKEFRONT LOT WITH OCEAN VIEWS**

This lakefront acreage is close to town, offers all day sun and fabulous ocean and lake views. An easy lot to develop as driveway is roughed-in to potential building site. Only \$89,000 MLS.

CALL EILEEN LARSEN



**AN INVESTMENT OPPORTUNITY**  
Fulford Harbour acreage. Zoned C4 & residential. The C4 located behind Fulford Inn & bordering Fulford Creek. The residentially zoned part has an older home with ocean views & good garden area. Listed at appraised value, the property has interesting possibilities.

CALL DARLENE O'DONNELL



**HOME WITH ISLAND CHARACTER**

West coast style sets the mood, the use of natural wood compliments it. Three bedrooms. Two baths. Lovely open plan living area with vaulted ceiling. Pleasant garden with vegetable area and fruit trees. 1.19 acres. \$179,000 MLS.

CALL ANNE WATSON



**INVITATION TO ADVENTURE**

Contemporary three bedroom rancher on a sunny level, wooded two acres with a large trout pond. Features vaulted ceiling, lots of sun-decking for outdoor living and located in excellent neighbourhood. Private hot tub off master bedroom. \$189,000.

CALL FINN RONNE



**RETIRE WITH A VIEW!**

A private courtyard leads into a charming, spacious 2 bedrm, 2.5 bathrm home with a gorgeous view of lake and distant mountains. A superior designed and constructed home in an excellent location. Large double garage, private suite down ideal for guests. List price \$269,000 ML.

CALL SYLVIA GALE



**SPECTACULAR LAKEVIEW SUNSETS**

From this very sunny open and airy home with panoramic vista of mountains, lake and ocean. Easy care .56 acres, very private and quiet. \$219,000 MLS.

CALL EILEEN LARSEN



**A RARE FIND**

A beautiful 4.36 acres with a SUPER VIEW of Trincomali Channel and private ramp access to beach across the road. Delightful 3 bedroom, 2.5 bathroom home in a charming garden setting with mature trees and shrubs. Separate GUEST COTTAGE, woods and pasture. Private MOORING BUOY included. List price \$379,500 MLS.

CALL SYLVIA GALE



**PRIME FULFORD VALLEY FARM**

in the beautiful Fulford Valley. Well built home. Presently used as 3 br. up, 3 br. down duplex. \$329,000 MLS.

CALL DARLENE O'DONNELL



High back a lot with spectacular views. Access to the beach is not that difficult and well worth the effort. Asking \$169,000 MLS.

CALL EILEEN LARSEN



**NATURE LOVERS' HABITAT**

Nestled in a wooded glade overlooking a small duck pond is this comfortable, nicely finished one level, three bedroom home with with huge two car garage/workshop, extensive decking and pleasant easy care garden. \$234,900 MLS.

CALL ANNE WATSON



**SECLUDED WATERFRONT LOT**

This 1/2 acre serviced lot is in the Musgrave Landing area of Sansum Narrows. A boaters paradise with sheltered marina (space included with purchase), tennis court, fishing and hiking trails. Fantastic quiet hideaway with first class scenery. \$139,500 MLS.

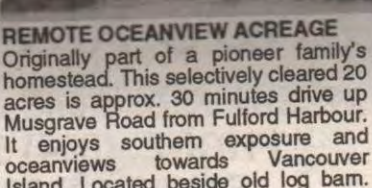
CALL BRIAN BETTS



**AN ESTATE IN THE MAKING**

Secluded WF setting of over 2 acres. Panoramic views from the LR of this spacious one level home allow you to enjoy the ever changing marine traffic, eagles, seals & otters. Set in a lovely country garden, with a sand and shell beach at the water's edge. MLS.

CALL MARY SMALL OR PAT JACQUEST



**REMOTE OCEANVIEW ACREAGE**

Originally part of a pioneer family's homestead. This selectively cleared 20 acres is approx. 30 minutes drive up Musgrave Road from Fulford Harbour. It enjoys southern exposure and oceanviews towards Vancouver Island. Located beside old log barn. List price \$119,900.

CALL DARLENE O'DONNELL



**SKYLIGHTS GALORE!**

This 3 br 2000 sq.ft. custom home offers peace & quiet yet is only minutes from town. 600 sq.ft. of deck for entertaining, plus 2.26 acres with lakefront on Bullock Lake. Asking \$284,500 MLS. A must see!

CALL EILEEN LARSEN



**SO PRIVATE, SO SUNNY!**

Spacious rooms, over 3000 sq.ft. of living area, a wonderful SEAVIEW, a very private 1.48 acres with SW exposure, huge deck space for summer living and a 500 sq.ft. workshop area - terrific value for \$239,000 MLS.

CALL SYLVIA GALE



**THRIVING BUSINESS**

In heart of Ganges high traffic area and good menu make this an excellent opportunity to be your own boss. Price includes all equipment. \$65,000 MLS.

CALL EILEEN LARSEN



**THE SMART BUYER...**

Will see the value in this .43 acre property! One of the most reasonably priced properties in today's market place. Situated in area of good homes with water, power & cablevision to property line. With a little imagination this property could be developed into a beautiful park-like setting surrounding your home with natural vegetation and arbutus trees. You have to see it to believe it. \$53,000 MLS.

CALL BECKY LEGG



**LOCATION - SUN - VIEW**

Totally secluded new 3 bdrm rancher. Over 1700 sq. ft. of living area. Double garage. Vaulted pine ceiling. Spacious decks. Hardwood floors. 5 - 1/2 acres with one of kind lake & valley views. Very sunny southern exposure. Only minutes from Ganges. \$253,000 GST.

CALL FINN RONNE



**A WATERFRONT LOT**

For under \$100,000 - are we kidding? No, we're not. Minutes by boat from Ganges Harbour on Secret Island. Easy access beachfront for safe and secure moorage. Sheltered year round from any kind of weather. Treed with community water and dock. Call! Only \$59,900 MLS.

CALL JANET B. MARSHALL OR GEORGE PUHARICH



**IF LOCATION IS IMPORTANT**

Bask in the warmth of southe exposure. Spacious custom home w lovely views of Sansum Narro framed by towering arbutus. Lots room on over an acre of law garden, and nature's untouch beauty. Unique \*almost waterfro setting. \$329,000 MLS.

CALL PAT JACQUEST



**SUPER SUNNY VESUVIUS**

Enjoy soaking up some rays on the expansive deck of this Vesuvius area home. Spectacular seaviews, warm southern exposure and an easy care setting that allows you time to soak in the hot tub and relax in the sauna. Custom designed quality built home. \$285,000 MLS.

CALL PAT JACQUEST



**SOUTHEND COTTAGE & ACREAGE NEAR LAKE**

Beautiful 10 acre property with lake & ocean views. Older 2 bedroom cottage & barn, timber, & lots of firewood, good water, plus only a few steps to Stowell Lake and a very few minutes to Fulford Ferry. Vendor says bring offers to \$185,000 MLS.

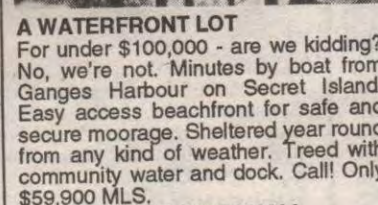
CALL DARLENE O'DONNELL



**TWO CHOICE BUILDING LOTS**

To choose from. Pay a little more for a serene harbour view or save some money and walk to the beach instead. Either way - all services included, municipal water perc tested and ready for your building plans. No guessing necessary. From \$69,900 and up.

CALL JANET B. MARSHALL OR GEORGE PUHARICH



**YOU PICK THE COLOURS!**

New 3 bedroom home to be built on 1.63 acres. Very sunny location. Minutes from Ganges. Pastoral views. Two floor designs available. For more details, call Finn. \$165,000. GST included.

CALL FINN RONNE



**SERVICED BUILDING LOT**

Great building lot located in the Mary's Lake area. Easy access w road frontage on both the front & back property lines. Nicely treed w gentle slope. Hydro, water, cable telephone to property line. Close good swimming and fishing la \$57,000 MLS.

CALL BECKY LEGG



# Century 21

## Islands Realty Ltd.

Pender Island 629-6417  
629-6494  
Galiano Island 539-2002  
Mayne Island 539-5527  
Saturna Island 539-2121



**RONNE**  
Sales Rep.  
-1271



**ANNE WATSON**  
Sales Rep.  
537-2284



**BRIAN BETTS**  
Sales Rep.  
537-9981



**BEV JOSEPHSON**  
Sales Rep.  
537-2532



**GEORGE PUHARICH**  
Sales Rep.  
537-9111



**PETER W. BARDON**  
Sales Rep.  
653-4576



**HERB DURLINGER**  
Sales Rep.  
653-9514



**MARY SMALL**  
Principal Agent  
537-5176

### SALT SPRING PROPERTIES



**CONTEMPORARY COUNTRY HOME**  
This 3 bedroom, 2 1/2 bathroom home has the character of yesterday with the convenience of today. Air-tight wood stove plus fireplace, oak cabinets, built-in vacuum system, and covered porches are just a few of the extras found in this family home. \$179,000 MLS  
**CALL BECKY LEGG**



**IDEALLY PRICED!**  
A lot from a little... can be had from this large family home including 2 bedrooms, 2 bathrooms plus family room. This home is located close to elementary school and beach in a good family neighbourhood. The 1/2 acre property is very level and could be developed into a great family backyard. \$145,000 MLS.  
**CALL BECKY LEGG**



**GRACE POINT LEASES**  
A great spot for a creative retailer or professional. There are only two spaces left. Very reasonable. Attractive views over Ganges Harbour. For a complete package call now.  
**CALL PETER BARDON**



**VENDOR TRANSFERRED**  
This spectacular luxury home will warm your heart. Fabulous 180 degree views of Ganges Harbour, Mt. Baker, city lights and more. Relax by the open fire, soak in the luxury of a tub with a view, and proudly entertain your friends in the spacious light filled rooms and on a deck for a king! \$335,000 MLS.  
**CALL PAT JACQUEST**



**EXCELLENT LAKE VIEW HOME**  
New home on level 1.84 acres with large trout pond. Over 3100 sq. ft. of finished living area, hardwood floors, built-in vacuum, large sun decks, these are just some of the many features this house offers. Call for more details.  
**CALL FINN RONNE**



**ATTRACTIVE LOG HOME**  
A truly pretty one and one half bedroom home. Living room with fireplace, dining room, and kitchen, 4 piece bathroom. Useful storage shed. Lovely private and treed property. Asking only \$126,000 MLS.  
**CALL PETER BARDON**



**SUPER WATERFRONT**  
165 ft. of waterfront with steps to the beach. A truly charming two bedroom home with breathtaking views over Fullford Harbour. Unique guest cottage, could pay part of the mortgage and the taxes. Asking \$265,000. MLS # 46861.  
**CALL PETER BARDON**



**SUPER BUILDING LOT**  
Oceanview building lot, 1.10 acres, roughed-in driveway, level building site and power to the property line. Quiet, sunny setting within walking distance to the beach. Drilled well. List price \$72,500 MLS.  
**CALL FINN RONNE**



**LOTS OF POTENTIAL**  
Fabulous view which could be improved further. Level entry with full daylight basement mostly finished with roughed in plumbing. Studio or workshop space, plenty of storage on 1.15 acres in great location. \$179,000 MLS.  
**CALL EILEEN LARSEN**



**ONLY \$69,900!**  
Two lots starting as low as \$69,900 - both almost an acre apiece. Both with municipal water and all services. You can either look at the sea or walk to it. You choose. If you are ready to build, then one of these lots is waiting for you. Don't procrastinate any longer! From \$69,900 MLS.  
**CALL JANET B. MARSHALL OR GEORGE PUHARICH**



**A RANCHER WITH A BASEMENT**  
3 bedrooms on the ground level; nice sunny kitchen with a deck. Warm, toasty living room with a wood stove. Plus a large half basement with its own entrance. Lots of storage and a large private lot. Only \$149,900.  
**CALL JANET B. MARSHALL OR GEORGE PUHARICH**



**SUNNY FERNWOOD HOME**  
Sunny 3 bedroom home with over 2100 sq.ft. 2.72 acres of fenced pasture and landscaped property. A variety of fruit trees and good gardening areas. Covered sundeck, paved driveway and parking area. Distant ocean views. Good area for children. List Price \$165,000.  
**CALL FINN RONNE**



**BEAUTIFUL FAMILY HOME**  
4 bedrooms, a den/office, dining area with a deck off it -- Large living room with a wood stove, 6 appliances included. Large double garage (two doors), workshop and an even larger yard with fruit trees, raised bed garden and trees and flowers throughout. \$174,500 MLS.  
**CALL JANET B. MARSHALL OR GEORGE PUHARICH**



**FABULOUS FOREST FEN**  
Feathery ferns fan fascinatingly over fairies feasting on the berries beneath towering firs and maples. Equidistant between Ganges and Beddis beach. Well included, several good building sites. Three acres allows house and guest cottage. Excellent B&B potential. \$84,000 MLS.  
**CALL JANET B. MARSHALL OR GEORGE PUHARICH**

**SEAVIEW LOT**  
Almost an acre, services at lot line. Private and in area of good homes. \$55,000 MLS  
**BEV JOSEPHSON**



**ON THE EDGE OF PARADISE!**  
This beautiful 2 bedroom, 3 bathroom townhouse has everything required for a perfect retirement home. Den, fireplace, oak cabinets, garage and many more extras (including hot tub!). Private safe year round moorage. All of this situated right on the water's edge of Ganges harbour! \$365,000 MLS  
**CALL BRIAN BETTS**



**YOURS FOR THE BASKING**  
When the proud owners built this home, they didn't skimp on quality! Extensive custom details include imported tile works, designer oak kitchen, and an English pub-style family room complete with oak wainscotted pool room! Expansive sea views of Trincomali Channel available from every room. \$279,000 MLS.  
**CALL PAT JACQUEST**



**HYSTERICAL ABOUT THE HISTORICAL?**  
Make yourself the proud owner of this dream property. Heritage style home - lovingly cared for with up to date oak kitchen, beamed ceilings, wainscoting and planked floors. Sited on 2+ acres of gardens, wood and orchard with lovely seaviews. \$325,000 MLS.  
**CALL PAT JACQUEST**



**AWAY FROM IT ALL**  
If you would like to be "away from it all" yet only minutes from town you will love this immaculate home on acreage in the Maxwell Lake area. Features include pegged wood & tile floors, 3 bds, family room, wood & electric heat, 14x26 carport, landscaping, good garden soil, beautiful trees, piped water. Offered at \$179,000.  
**CALL DARLENE O'DONNELL**

**.49 ACRE BUILDING LOT**  
Great building lot located in the St. Mary Lake area. Easy access with road frontage on both the front and back property lines. Nicely treed with gently slope, Hydro, water, cable & telephone to property line. Close to good swimming and fishing lake. \$57,000 MLS.  
**CALL BECKY LEGG**



**VACATION AT HOME**  
Spend the summer relaxing at the beach - right off your own deck! Charming waterfront home boasts immense windows to the view, a gracious relaxed style and pretty gardens for your enjoyment. Beautiful clamshell cove is perfect for sunning, swimming and possible moorage. \$475,000 MLS.  
**CALL PAT JACQUEST**



**PEEK-A-BOO CHARM!**  
"Cute", "charming", "pretty" are some of the words that real estate agents use to describe this 3 bedroom home close to St. Mary Lake. Easy to care for Landscaping, lots of decks and windows, cedar throughout with views of the lake. Only \$149,900 MLS.  
**CALL JANET B. MARSHALL/GEORGE PUHARICH**



**THE BEST OF SALT SPRING ISLAND**  
439 acres with expansive views over Sansum Narrows and Satellite Channel to Vancouver Island. This large parcel of land is part of the prestigious Musgrave Landing Ocean Estates Strata Development, which includes ownership in private marina and common property. \$450,000 MLS.  
**CALL BECKY LEGG OR BRIAN BETTS**



**PANORAMIC VIEW LOT**  
1/2 acre Musgrave Landing lot serviced with water power and sewer. Level building site. Superb south facing oceanfront with sheltered moorage at the private marina. \$150,000 MLS.  
**CALL BECKY LEGG OR BRIAN BETTS**



**CHOOSE FROM TWO ACREAGES**  
The smaller one has seaweed potential, the larger one allows home and cottage construction. Good building sites on both. Water on both. Reduce your building costs drastically - call for more details. Starting at \$83,000 MLS.  
**CALL JANET B. MARSHALL OR GEORGE PUHARICH**

**PRICE REDUCED!**

**ISLAND LIVING**

# Picnic invites owners of "interesting cars"

It is time to dust off that old picnic basket and polish up your favourite set of wheels.

Organizers of the Annual Cowichan Valley Car Picnic have announced plans for their seventh such event for owners and admirers of "interesting cars."

This year's convoy through the valley and picnic on the green — sponsored by the Duncan Rotary Club — will be held Sunday, August 9.

## Seventh annual event takes place in Cowichan Valley

The group of classic car enthusiasts that hosts the picnic each year is inviting every owner of an antique, classic, custom and other unusual vehicle in the area to join them at this family event.

Says spokesman Mike Bieling: "When we planned our first car picnic in 1986, we agreed that we'd

leave it up to the owners themselves to decide whether their car was interesting, and that's worked for us ever since. We're now well known for holding an informal fun gathering, and participants can expect a pleasant half-hour drive along a scenic country route, a picnic on a grassy field at the end of

the road, and a chance to see at least a few local representatives of motoring history that will interest them."

Participants in the convoy will meet at the Farmers' Market in the City of Duncan parking lot (by the mound opposite Eatons), between 10:30 and 11:30 a.m. on Sunday,

August 9.

They will then drive a scenic route from Duncan to the main playing field at Brentwood College in Mill Bay. There the cars will be on display, and a picnic held until 3 p.m. There's a \$2 entry charge per vehicle to help the organizers cover costs, but spectators who like interesting cars are welcome free.

For more information, call Mike Bieling at (home) 748-5031 or (office) 746-5905.

## ARTIST

From Page A1

ArtCraft was mostly "pictures and a few crafts" when it started, said Clayton. There were no guilds on the island and fewer than 3,000 people lived here. Ensuing years have been a building process for the show, she added.

Now, there is paid staff at the show, and guilds such as the Painters' Guild, of which Clayton is member, have originated and flourished.

At ArtCraft, "we have got much better displays and more people putting things in," she said. "Quality has risen as more people put things in."

Not only has Clayton been a contributor to ArtCraft, but she has also been the convener of ArtCraft and chairman of the Community Arts Council.

Last week, she was honoured at ArtCraft by being named artist of the week.

### Love reading the Driftwood?

**ATTENTION  
ALL  
OFF-ISLAND  
DRIFTWOOD  
SUBSCRIBERS...**

We have adjusted our subscription renewal policy. It is now possible to purchase a 6 month subscription at \$35.00 (plus GST) for "off island" subscribers. Just fill out the attached coupon and mail it to:

Driftwood Publishing  
Box 250, Ganges, B.C.  
V0S 1E0

**--SUBSCRIPTIONS--**

Send a cheque or money order to  
Gulf Islands Driftwood Box 250, Ganges, B.C. V0S 1E0

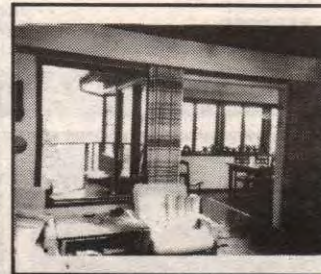
Name \_\_\_\_\_  
Address \_\_\_\_\_

Or use your Visa  or Mastercard  or Cheque   
12 Months  6 Months

Yearly Subscription Rates: In the Gulf Islands \$22.47\*  
Elsewhere in Canada, \$56.52\* /6 Months \$37.45\* /Foreign \$83.00  
\*Includes GST

**IT'S ALL THERE FOR YOU - IN THE CLASSIFIEDS**

## OPEN HOUSE SAT. & SUN. AUG. 8 & 9



OPEN FROM 1:00 PM TO 4:00 PM

### HAND BUILT ISLAND HOME 136 MOBRAE AVE., EAST

This unique 4 bedroom, 2 bathroom lakeview home was built by a craftsman. The yard is carefully landscaped to maximize privacy and take advantage of all day sun. The warmth of wood features make this home feel warm and cozy. And two sources of heat actually do keep you warm. This is a real character home - exactly what you're coming to Salt Spring Island for. Come and see for yourself.

**\$210,000 MLS**



**JANET MARSHALL**  
537-5359



**GEORGE PUHARICH**  
537-9111



Islands Realty Ltd.  
537-9981 (24 hrs)  
Box 454, Ganges B.C. V0S 1E0

Each Office Independently Owned and Operated



Galiano Island 539-2002  
Mayne Island 539-5527 (Phone) 539-2144 (Fax)  
Pender Island 629-6417 (Res.) 629-6494 (Res.)  
629-3366 (Fax) 655-3411 (Toll free from Victoria)  
Saturna Island 539-2121 (Res.) 253-7596 (Pager #2121)  
EACH OFFICE IS INDEPENDENTLY OWNED & OPERATED.

Salt Spring Island Head Office  
537-9981 (24 Hrs.)



**JANET MARSHALL**  
Galiano Sales Rep.  
539-2002



**ROSE BECKMAN**  
Mayne Sales Rep.  
539-5527



**FLYNN MARR**  
Mayne Sales Rep.  
539-5527



**SUE FOOTE**  
Pender Sales Rep.  
629-6417



**JOHN FOOTE**  
Pender Sales Rep.  
629-6417



**ALEX FRASER**  
Pender Sales Rep.  
629-6494



**DON PIPER**  
Saturna Sales Rep.  
539-2121

### GALIANO ISLAND

#### SECRET ISLAND OCEANFRONT

One of the most sheltered waterfront on the Gulf Islands. Only 15 minutes from Ganges or the other Gulf Islands. Community water system, community dock and quite a friendly community. All in all a great place for your summer hideaway. East to access waterfront. Two lots to choose from - both \$59,900. Yes only \$59,900.

CALL GEORGE PUHARICH OR  
JANET B. MARSHALL  
537-9111/537-5359

### SATURNA ISLAND

#### ATTENTION: ARTISTS, WRITERS, CREATIVE PEOPLE!

Log home featuring large, bright loft, modern kitchen, sliding glass doors which open onto a 2-level ocean view deck where you can relax in an enclosed hot tub. Enjoy the uniqueness of this special home -- write, paint or simply "get away from it all" and take in the ambience. \$109,000 MLS.

CALL DON PIPER  
539-2121

### MAYNE ISLAND



#### HOME BY THE SEA

Immaculate 3 bedroom home on half an acre by the ocean. Wood floors in living room, dining area, radiant electric heat, fireplace, with sliding glass door to a spacious sundeck overlooking Village Bay and Trincomali Channel. The yard is large with a path down to the sandy/gravel beach. Excellent price, excellent buy. \$219,000 MLS.

#### GREAT STARTER LOT

Secluded building lot on Mayne Island under Mount Parke. Within walking distance of BC Ferry Terminal, this lot has power, water and telephone at the lot line. Price right to sell now! \$14,500.

#### FREE CATALOGUE

Call for our free catalogue and newsletter on Island Properties. Don't delay. Start your search today!

### MAYNE ISLAND



#### SERVICE STATION/GAS DOCK In the beautiful Gulf Islands of B.C.

- \* 0.83 ac. C-5 Commercial Free Hold
- \* 1680 sq. ft. Service Station
- \* 960 sq. ft. Commercial Lease Space
- \* 2 Gas Pumps, Esso Supply Contract
- \* Propane, Fumace Oil Service
- \* Gas Dock in busy Active Pass
- \* 2 bedroom 1100 sq. ft. home
- \* Video Rental Business and more!

This is a dream opportunity to live and work in the heart of Canada's water vacation playland. This immaculate business is well run and profitable. A unique offering at only \$469,500 MLS.

### PENDER ISLAND

#### HARBOUR VIEW

South-facing, 2 bdrm home overlooking Browning Harbour, sundeck, attached carport & paved driveway. \$169,000.

#### WOW!!!

2 bdrm home with fenced garden, paved driveway AND THE MOST SPECTACULAR VIEWS. Just \$149,000.

#### SIMPLY THE BEST

3 bdrm executive home on a sunny OCEANFRONT acre with WONDERFUL VIEWS. Custom built, with all the extras, plus an extraordinary fenced garden with cascading fish ponds. \$395,000.

#### LOOK AT THIS!

2 bdrm mobile home with attached sundeck & separate garage/workshop. Only \$79,900.

#### LAKEFRONT!

...sunny, south-facing lot, with small travel trailer. Easy access to the water. \$79,000.

For these and other premium Pender properties, CALL JOHN AND SUE FOOTE at 629-6417 (or 655-0411, toll-free from Victoria).

ISLAND LIVING



**A TAD CHILLY:** The top of Stowe Lake is a might frosty for the bottom of this baby. However, for many cooling off in an island lake is a great way to beat the heat.

Driftwood photo by Derrick Lundy

# Galiano ratepayers' head blasts local Islands Trust

The Galiano Ratepayers' Association recently made its constitution public and is currently distributing copies of this document to its growing membership which numbers about 130.

By ALISTAIR ROSS  
Driftwood Correspondent

The fact this is a ratepayers group means the constitution deals strongly with items of importance to property owners: the preservation of property rights and values, and the provision of services to these lands.

The political responsibilities of government is also a concern to ratepayers, as is the levying of taxes against private property, which the group maintains should be fair and equitable, and kept to a minimum.

It is this "fairness and equitability," plus the size of an ever-increasing tax burden, that prompted ratepayers' president Frank Hillier to put his thoughts on paper and present them to the Islands Trust at a recent public meeting here.

The gathering was called to collect input into the development of Trust policy on island matters, one of a series of such meetings held throughout the Trust area.

Hillier's paper was extremely critical of the Islands Trust and of its apparent support of the Galiano Conservancy, and of the Trust's recent land use bylaws adopted by the present government so soon after it took office.

The cost of a third level of government also concerns Hillier and the ratepayers' association.

The paper begins by retelling the story of forestry on Galiano from mid-1986 when logging traffic on island roads became the concern of many citizens.

Hillier's account reviews in detail MacMillan Bloedel's plans of that time for use of island lands, and of the company's intention to develop an east side road to relieve the traffic problem on Porlier Pass Drive, the island's only north-south public road, then and now.

The account goes on to review life for Galiano's citizens at that time.

"We had the best of both worlds, we had free access to all of MacMillan and Bloedel's lands. The company had committed itself to the protection of the Bodega Ridge trail and forest area. All of the company's forest areas were accessible for hiking, picnicking and horseback riding, and MacMillan Bloedel maintained the trails free of any cost to islanders. This included Mount Galiano where no logging would be done, because there was insufficient merchantable timber. A happy and congenial relationship existed between the company and the residents of the island."

In blunt terms Hillier then puts the cause of the island's current problems squarely on the shoulders of the Galiano Conservancy, Clear-Cut Alternatives and F.L.U.C. (Forest and Land Use Council),

which "appeared on the scene, took over and threw it all away."

He continues: "they meant well, but they just seemed to be unable to listen to reason or the concerns of others, and the community as a whole, was given no chance to vote on issues."

Here Hillier is critical of the Trust, which with its land-use bylaws gave Galiano taxpayers no chance to vote on what was to become some very controversial legislation. At the public meetings where bylaws were aired, he observed, "not more than 300 people were there (about 200 for and 100 against). You can't possibly measure the true desires of the community with that kind of a practice. How about the 1,000 or more property owners who were not even notified of the meeting?"

After searching the tax roles, Hillier lists Galiano taxpayers as follows: owners residing on the island, 775; owners residing in the Vancouver area, 817; owners from Vancouver Island and the other Gulf Islands, 150; and "others" to a total of 1,743 individuals.

He drives home the point that most of these property owners were disenfranchised by decisions made at a public meetings where those attending were not necessarily residents, let alone property owners.

In his paper, Hillier also questions jurisdiction of the Trust regarding roads and ferries. He also questions the Trust's mandate to

HILLIER B10

## HOMES

### NO GST

2300 + sq. ft. 3 bedrooms, 2 baths, living rm, dining rm, lge. decks, 1 acre seaview lot with 50 acre greenbelt in front for privacy.

Priced \$275,000

### NEW LISTING

New home, Channel Ridge, 2500+ sq. ft., luxury home with 9 ft. ceiling, dream kitchen, covered deck, two car garage, too many extras to mention. Great views.

Price \$399,000

### WATERFRONT HOME

Located on Mountain Park Drive, fantastic view, moorage, new to market, two bedrooms down, lge master suite with jacuzzi tub, dining rm, living rm with views, decks back & front, a must to see.

Price \$460,000

### EXECUTIVE HOME

Approximately 10 acres S.W. exposure, orchard, greenhouse, cottage, plus revenue, lge. 4 bedroom home, decks, steam room, separate master suite, many extras.

Priced \$379,000

### NEW LISTING W.F.

Waterfront home, built at water's edge. S.W. exposure, 4 bedroom home, 2 bathrooms, lge decks, land secluded, fruit trees, character home.

Price \$239,000

### REVENUE PROPERTY

Large home located in Vesuvius Bay area, main floor. Rent \$900. base-ment suite can be rented for \$650 per month. Interesting investment.

Price \$195,000



CREEK HOUSE REALTY LTD.

CALL MEL TOPPING

Days: 537-5553 Eves: 537-2426



Stay on Saturna this Summer!



### BED & BREAKFAST

Cosy heritage farmhouse. Large antique-filled rooms, some with ocean view, private bath, reasonable rates. Comfortable wraparound porch, sumptuous farm breakfast. Five minutes walk to ferry dock. Beach access. Families welcome. We have a cat and dog - no extras please. Smoking confined to the porch. Reservations recommended.

JANET COMSTOCK  
104 Payne Rd., Saturna Island  
Box 44, VON 2Y0 539-5002



### Wild Wing Bed & Breakfast

Private suite - two bedrooms, private bath. Lounge with fireplace. Accommodates 1-6 people. Full breakfast. Peaceful surroundings. Overlooks Lyall Harbour. Walking distance to ferry, stores and pub.

Lill Cunningham

(604)539-2961

East Point Road

### EAST POINT RESORT (604) 539-2975

In a park-like setting on a gradually sloping sandy beach, 1 & 2 bedrooms, spacious housekeeping cottages, with full kitchens bath & deck with view.

Fishing & Nature Walks  
Boat Rentals & Boat Ramp

East Point Road, Saturna Island, VON 2Y0

ISLAND LIVING



A TAD CHILLY: The top of Stowe Lake is a might frosty for the bottom of this baby. However, for many cooling off in an island lake is a great way to beat the heat. Driftwood photo by Derrick Lundy

# Galiano ratepayers' head blasts local Islands Trust

The Galiano Ratepayers' Association recently made its constitution public and is currently distributing copies of this document to its growing membership which numbers about 130.

By ALISTAIR ROSS  
Driftwood Correspondent

The fact this is a ratepayers group means the constitution deals strongly with items of importance to property owners: the preservation of property rights and values, and the provision of services to these lands.

The political responsibilities of government is also a concern to ratepayers, as is the levying of taxes against private property, which the group maintains should be fair and equitable, and kept to a minimum.

It is this "fairness and equitability," plus the size of an ever-increasing tax burden, that prompted ratepayers' president Frank Hillier to put his thoughts on paper and present them to the Islands Trust at a recent public meeting here.

The gathering was called to collect input into the development of Trust policy on island matters, one of a series of such meetings held throughout the Trust area.

Hillier's paper was extremely critical of the Islands Trust and of its apparent support of the Galiano Conservancy, and of the Trust's recent land use bylaws adopted by the present government so soon after it took office.

The cost of a third level of government also concerns Hillier and the ratepayers' association.

The paper begins by retelling the story of forestry on Galiano from mid-1986 when logging traffic on island roads became the concern of many citizens.

Hillier's account reviews in detail MacMillan Bloedel's plans of that time for use of island lands, and of the company's intention to develop an east side road to relieve the traffic problem on Porlier Pass Drive, the island's only north-south public road, then and now.

The account goes on to review life for Galiano's citizens at that time.

"We had the best of both worlds, we had free access to all of MacMillan and Bloedel's lands. The company had committed itself to the protection of the Bodega Ridge trail and forest area. All of the company's forest areas were accessible for hiking, picnicking and horseback riding, and MacMillan Bloedel maintained the trails free of any cost to islanders. This included Mount Galiano where no logging would be done, because there was insufficient merchantable timber. A happy and congenial relationship existed between the company and the residents of the island."

In blunt terms Hillier then puts the cause of the island's current problems squarely on the shoulders of the Galiano Conservancy, Clear-Cut Alternatives and F.L.U.C. (Forest and Land Use Council),

which "appeared on the scene, took over and threw it all away."

He continues: "they meant well, but they just seemed to be unable to listen to reason or the concerns of others, and the community as a whole, was given no chance to vote on issues."

Here Hillier is critical of the Trust, which with its land-use bylaws gave Galiano taxpayers no chance to vote on what was to become some very controversial legislation. At the public meetings where bylaws were aired, he observed, "not more than 300 people were there (about 200 for and 100 against). You can't possibly measure the true desires of the community with that kind of a practice. How about the 1,000 or more property owners who were not even notified of the meeting?"

After searching the tax roles, Hillier lists Galiano taxpayers as follows: owners residing on the island, 775; owners residing in the Vancouver area, 817; owners from Vancouver Island and the other Gulf Islands, 150; and "others" to a total of 1,743 individuals.

He drives home the point that most of these property owners were disenfranchised by decisions made at a public meetings where those attending were not necessarily residents, let alone property owners.

In his paper, Hillier also questions jurisdiction of the Trust regarding roads and ferries. He also questions the Trust's mandate to

HILLIER B10

## HOMES

### NO GST

2300 + sq. ft. 3 bedrooms, 2 baths, living rm, dining rm, lge. decks, 1 acre seaview lot with 50 acre greenbelt in front for privacy.

Priced \$275,000

### NEW LISTING

New home, Channel Ridge, 2500+ sq. ft., luxury home with 9 ft. ceiling, dream kitchen, covered deck, two car garage, too many extras to mention. Great views.

Price \$399,000

### WATERFRONT HOME

Located on Mountain Park Drive, fantastic view, moorage, new to market, two bedrooms down, lge master suite with jacuzzi tub, dining rm, living rm with views, decks back & front, a must to see.

Price \$460,000

### EXECUTIVE HOME

Approximately 10 acres S.W. exposure, orchard, greenhouse, cottage, plus revenue, lge. 4 bedroom home, decks, steam room, separate master suite, many extras.

Priced \$379,000

### NEW LISTING W.F.

Waterfront home, built at water's edge. S.W. exposure, 4 bedroom home, 2 bathrooms, lge decks, land secluded, fruit trees, character home.

Price \$239,000

### REVENUE PROPERTY

Large home located in Vesuvius Bay area, main floor. Rent \$900. basement suite can be rented for \$650 per month. Interesting investment.

Price \$195,000



CREEK HOUSE REALTY LTD.

CALL MEL TOPPING

Days: 537-5553 Eves: 537-2426



Stay on Saturna this Summer!



### BED & BREAKFAST

Cosy heritage farmhouse. Large antique-filled rooms, some with ocean view, private bath, reasonable rates. Comfortable wraparound porch, sumptuous farm breakfast. Five minutes walk to ferry dock. Beach access. Families welcome. We have a cat and dog - no extras please. Smoking confined to the porch. Reservations recommended.

JANET COMSTOCK  
104 Payne Rd., Saturna Island  
Box 44, VON 2Y0 539-5002



### Wild Wing Bed & Breakfast

Private suite - two bedrooms, private bath. Lounge with fireplace. Accommodates 1-6 people. Full breakfast. Peaceful surroundings. Overlooks Lyall Harbour. Walking distance to ferry, stores and pub.

Lill Cunningham

(604)539-2961

East Point Road

### EAST POINT RESORT (604) 539-2975

In a park-like setting on a gradually sloping sandy beach, 1 & 2 bedrooms, spacious housekeeping cottages, with full kitchens bath & deck with view.

Fishing & Nature Walks  
Boat Rentals & Boat Ramp

East Point Road, Saturna Island, VON 2Y0

## ISLAND LIVING

# GALIANO Scene

### Templeman dies

George Templeman of Burrill Road died recently. In delicate health for some years, he became very ill at home and was taken to Lady Minto Hospital where he passed away shortly after his arrival.

An officer in the tank core of the British army during the Second World War, Templeman emigrated to the U.S. where he lived and worked as a draughtsman in both Los Angeles and San Francisco. He met and married his wife Ingunn while working in the latter city, and with her, came to live on Galiano in 1961.

The Templemans have lived on the island ever since that time except for short periods when jobs took them away. A teaching position at Port Simpson was one of these.

George leaves his loving wife Ingunn and their daughter Catherine to mourn him on Galiano, a sister in Australia and a brother in the United Kingdom. Mrs. Templeman's sister Carol and her husband Bob George, former Galiano residents who now live on North Pender, are well remembered here.

A 1962 painting by George Templeman of his new bride which was exhibited in last month's Galiano Artists' Guild Summer Invitational Show, was mentioned in this column in last week's *Driftwood*. Not mentioned, was a recently finished abstract by Templeman which was exhibited along with it.

An open house for all George and Ingunn's friends will be held on Saturday, August 8 at 2 p.m. at the Templeman home on Burrill Road.

### Original play

*Man on the Moon, Woman on the Pill*, an original play written and performed by Christine Taylor will receive its Galiano premiere at the South Galiano Hall on Saturday, August 8.

## HILLIER

### From Page B9

preserve and protect for the people of British Columbia and what this means in items of policy and costs.

"If the lands are being saved from development for the people of the province as a whole, then should not the taxpayers of the larger area be responsible for the legal costs which may be incurred in attempting to keep it that way?" he asks.

He also questions the qualifications of those who run for positions on the Trust, insisting that land ownership should be a qualifying factor. Both present Galiano Trust members are landowners, but this has not always been the case, he points out.

Hillier questions the cost to the householder of funding a third level of government (the Trust) — a service he considers an unnecessary and costly duplication.

It will be interesting to see if the membership of the ratepayers' association agree with him when the group holds its first meeting this fall.

Frank Hillier is a retired forestry engineer. He was, for several years, chairman of the Government's Environmental Appeal Board. He has



### DELUXE RETIREMENT HOME

You will admire and could enjoy living in this grand 1,330 sq. ft. home. Many outstanding features incl. bright sunny kitchen c/w 4 appliances, extra cupboards, built-in desk, breakfast rm. French doors to patio, 2 lg. B.R.'s - master has full dbl. vanity ensuite. Loads of storage in utility. Spacious L/R - D/R with attractive wood fireplace. 4 pc. bath, carport, office/ante rm. Beautiful gardens are all established.

Your inquiry is welcome

**PATRICK LEE**

Sales Rep. Brinkworthy Place  
**537-5302**

v.m.h.p. Holdings Ltd. Dealer#7904

**RECYCLE THIS PAPER**

### \*\*\* EXCELLENT VALUE \*\*\*

Yes; when you view this Residential property, you will agree.



Panoramic water & mountain view.



Custom designed, spacious open living.

#### FEATURING:

- \* Views
- \* 6 kitchen appliances
- \* acreage
- \* quality construction
- \* cable TV
- \* 3800+ sq. ft. living
- \* piped water
- \* 2 levels decking
- \* privacy

**A SALT SPRING ENVIRONMENT FOR YOUR RETIREMENT LIVING; NOW OFFERED AT \$349,000**



GIL MOUAT  
537-4900

Call Today for Further Information or to View



**NRS SALT SPRING REALTY LTD.**  
149 Fulford Ganges Road  
P.O. Box 69, Ganges, B.C. V0S 1E0

Phone: (604) 537-5515 Fax: (604) 537-9797  
Vic.Dir:656-5554 Van.Dir:278-5595



## GALIANO ISLAND REALTY LTD.

Jill Hansche-Penny 539-5896  
Rosemary Callaway 539-2515  
John Ince 539-2559  
Mollie Colson 539-5950

P.O. Box 99, Madrona Drive, Galiano Island, B.C. V0N 1P0  
**539-2250 • 539-2255 • Fax: 539-2097**

### RESIDENT REAL ESTATE SPECIALISTS



**PEMBERTON HOLMES (GULF ISLANDS LTD.)**  
"Your Community Realtor"

537-5568  
P.O. Box 929,  
156 Fulford Ganges Rd.  
Ganges B.C.  
Victoria Dir. & Fax 652-9225

1887 - 1992  
105 Years  
as your good neighbour!  
1887-1992

#### SUPER SALT SPRING ACRES

- \$149,000
  - \* exceptional 6.5 acres
  - \* panoramic views
  - \* drilled well - 3gpm
  - \* private - always sunny
  - \* near Ruckle Park
- Call Ann for Details

#### HERITAGE FARM - 29 ACRES

Beautiful ocean views, rolling meadows, 3 bedroom main home, 1+2 BR duplex, barn, chicken house, workshop, garden shed, 2 wells, lovely wood lot. A Salt Spring Island treasure. \$370,000 MLS.  
Call Pat

#### WATERFRONT ACREAGE

- \* Five tranquil acres on lagoon
  - \* Giant, stately trees
  - \* Sunny building sites
  - \* Driveway in \* 6 GPM well
- MLS \$185,000  
Call Pat

#### SANDY OCEAN BEACH

1.39 ac. - level building lot  
Foreshore lease in place  
Secure deep-keel moorage  
Asking \$185,000  
Call Wynne

#### OCEANFRONT RESIDENCE

Prestigious neighbourhood  
OWNER HAS PURCHASED NEW HOME AND IS ANXIOUS TO SELL  
\$349,000  
Call Wynne to View



#### SPECTACULAR VIEWS FROM EVERY ROOM!

- custom built home
- private & sunny 2 acres
- sunroom
- family kitchen
- local stone featured in many areas

**CALL TODAY FOR AN APPOINTMENT TO VIEW \$475,000**

Call Arvid

#### WATERFRONT PROPERTIES

- \* Beautifully landscaped
  - \* 3 bedroom house \* guest cottage
  - \* garage / workshop \* greenhouse
  - \* stable / riding ring
  - \* .16 acres
- \$569,000 MLS**

- \* Loaded with peace & quiet
  - \* southfacing and close to town
  - \* .95 acre
  - \* just waiting for your house or cottage plans
- \$137,000 MLS**

- \* SOUTHBEND BEAUTY
  - \* 5 acres close to Ruckle Park
  - \* small cottage
  - \* a place to stay while you build your dream home
  - \* hydro, water & telephone in
- \$349,000 MLS**

- \* FANTASTIC FAMILY HOME
  - \* 1.5 acres on the lake
  - \* lots of space for family or friends
  - \* double carport \* workshop area
  - \* fenced gardens
  - \* WANT TO TRY GOLF, THIS PLACE HAS IT!
- \$369,500 MLS**

For appointment to view on any of these properties, or information on any Salt Spring Island properties,

Call Arvid or Carol

ARVID CHALMERS - 537-2182

CAROL FOWLES 537-5993

ERIC BOOTH 537-9532

# PROVINCIAL ROUND-UP

by Hubert Beyer

## Haida Nation gets recreational fishing control

The provincial government last week signed a joint stewardship agreement with the Council of the Haida Nation for management of the recreational fishery on Haida Gwaii, in the Queen Charlotte islands.

Aboriginal Affairs Minister Andrew Petter said the Haida and the province have agreed to develop joint policies and strategies that reflect the two sides' "common environmental, social and economic interests."

Petter added he expects the program to result in positive conservation measures for the Haida Gwaii, the recreation and tourism industry, and the residents of the Queen Charlotte islands.

## Windy Craggy on hold again

Plans for the proposed Windy Craggy copper, gold and silver mine project in the Tatshenshini region of northwestern British Columbia were put on hold again last week when the government asked the Commission on Resources and Environment to make recommendations to cabinet on a land and water use planning process for the area.

Energy Minister Anne Edwards said the diversity of interests in the area, including the proposed mining venture, must get a full public airing.

CORE Commissioner Stephen Owen said he intends to make his recommendations by fall.

## No campfires

The extreme fire hazard in northern British Columbia last week prompted the B.C. Forest Service to impose campfire restrictions. Forest Minister Dan Miller said the restrictions will be in effect in a number of northern forest districts until further notice.

The restrictions do not apply to the use of gasoline or propane camp stoves, barbecues, or supervised campground fire pits.

To date, 1,539 forest fires have been reported across British Columbia, with 768 caused by people and 771 by lightning, burning a total of 17,115 hectares.

## Manufactured homes review

The provincial government last week appointed Malahat-Juan de Fuca MLA Rick Kasper to conduct a review of the legal rights of manufactured home and park owners.

Consumer Services Minister Moe Sihota said all previous studies on manufactured homes will be examined and consultations undertaken with the owners of manufactured homes and park owners.

About 42,000 of the 50,000 owners of manufactured homes live in rental parks which, Sihota said, puts them in a unique situation where, on the one hand, they own their homes, but have to rent the pads which makes them subject to many restrictions of which other homeowners are free.

## Log theft charges

The RCMP last week laid 13

charges against Wilmar Transport Ltd., and Herbert William Gudeit of Vernon for theft of logs and fraud, Forest Minister Dan Miller has announced.

## Door-to-door salesman charged

The Ministry of Labour and Consumer Services last week took action on behalf of an 82 year-old Kelowna woman against door-to-door salesman Hugh Arnold.

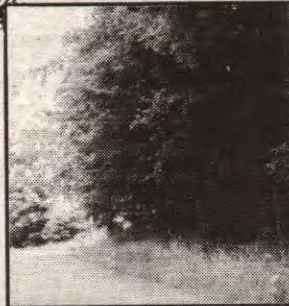
Arnold was hired by the elderly woman to install capping on a deck railing, put a vinyl coating on the deck railing and supply soffit to the ceiling of a single vehicle carport.

Two estimates indicated the cost of the work should have ranged from \$1,200 to \$1,800. Arnold charged the woman \$5,500 and didn't even complete the work.

Accordingly, the ministry, on behalf of the woman, charged Arnold with violating the Trade Practices Act for charging a grossly unfair price. Arnold is also charged with fraud over \$1,000 under the Criminal Code for a matter arising from the same incident.

The ministry emphasized that consumers make sure contractors are reputable and competent before contracting their services.

## FULFORD HARBOUR LAST CHANCE



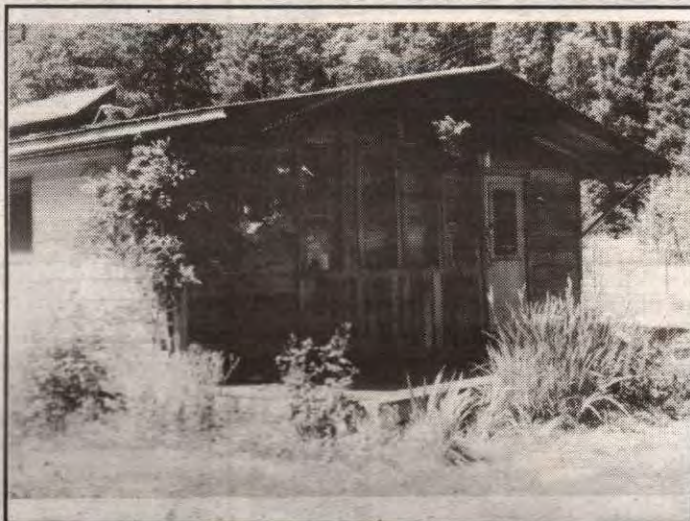
to buy on an affordable building lot in the Fulford area. Level, mature cedars & a quiet dead end road tell the story. This parcel is \$20,000 less than anything currently listed in the Fulford area.

**DON'T WAIT ON THIS ONE!!**  
 .96 acre \$57,900

Talk to the People Who Know Fulford



Talk to DENNIS O'HARA at our Fulford Branch 111 Morningside Road 653-9555 (office) 653-4101 (home)



## A GOOD BEGINNING

- \* A 3 bedroom home
- \* Centrally located
- \* 2 wells
- \* Good garden with fruit trees
- \* Sunny and affordable.

**ONLY \$115,000**



537-2154

Call  
**Jim Spencer**  
 or  
**Don Robertson**



653-4347

**NRS SALT SPRING REALTY LTD.**  
 149 Fulford Ganges Road  
 P.O. Box 69, Ganges, B.C. V0S 1E0

Phone: (604) 537-5515 Fax: (604) 537-9797  
 Vic.Dir: 656-5554 Van.Dir: 278-5595



## LAND

2.90 acres, water, power, well treed.  
**Price \$75,000**

1.59 acres, water, power, driveway.  
**Price \$64,500**

6 acres Parker Island waterfront  
**Price \$79,000**

5 acres, S.W. exposure, wooded, close to beach.  
**Price \$85,000**

68 acres, views, subdividable.  
**Price \$330,000**

65 acres, sea views, subdividable.  
**Price \$340,000**

25 acres, sea views, arable.  
**Price \$319,000**

1 acre view lot, Channel Ridge.  
**Price \$94,000**

**CHR CREEK HOUSE REALTY LTD.**

CALL MEL TOPPING

Bus: 537-5553 Res: 537-2426

## BRIDGE Tricks

The following Gulf Islands Duplicate Bridge Club members qualified for the North American Pairs Championships during qualifying rounds played July 14, 21 and 28.

Pairs may enter the first elimination round in Victoria later this fall if they choose to pursue greater competition.

### July 14: NORTH-SOUTH

Conhor Hunt and Ian Thomas; Danny Scarfe and Donna Taylor; Helen Shandro and Isabelle Richardson; Blanche Poborsa and Jim Burford.

### EAST-WEST

Norma and Gordon Joyner; Lois Johnston and Bill Buckler; Shirley Haynes and Stan Stewart.

### July 21: NORTH-SOUTH

Irene Hawksworth and Gordon Hutton; Peter Jacquest and Fred Struve; Bill Buckler and Lois Johnston.

### EAST-WEST

Norma and Gordon Joyner; June Knowles and Don Hull; Sue Bradford and Ernst Walt.

### July 28: NORTH-SOUTH

Peter Jacquest and Fred Struve; Helen Shandro and Isabelle Richardson; Donna Taylor and Dawny Scarfe.

### EAST-WEST

Blanche Poborsa and Jim Burford; Sue Bradford and Joan Conlan; Ima and Wim Krayenhoff.

All of these winners are now qualified to compete in the North American Pairs Championship games to be held this fall.

Kids off to College?  
 Miss your old friends?  
 Loved ones moved away?

Let them know how life is on Salt Spring Island, "the last paradise!"  
 Send them a subscription to the Driftwood for as little as \$21.40 (3 months).

Just call the friendly staff at the Driftwood for more information.

537-9933



### WATCH THE SHIPS GO BY

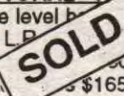
VIEW OF TRINCOMALI from this GORGEOUS custom blt. West Coast design. PRICED TO SELL NOW. SPACIOUS (2050 sq. ft. 2 levels) MASTER CRAFTED\* IMMACULATE & BRIGHT \* SKYLITES, 2 BATHS, STONE F/P Set up for CENTRAL VAC. On quiet .52 AC. SEP. DBLE. GARAGE, Lovely Deck. GOOD WELL. AN EXCELLENT BUY at \$205,000

### EXCELLENT FAMILY HOME \* PANORAMIC VIEW \*

Custom blt. 3 B.R. + DEN + 3 FULL BATHS! MASSIVE STONE F/P up, another F/P lower level. Attached GREENHOUSE & CONNECTING GARAGE. Sep. Dining. BRIGHT & SPACIOUS. PARKLIKE BEAUTY ON .80 AC. Short Drive to Town. Very nice area. \$349,000

### SUN DRENCHED & PASTORAL "VALLEY VIEW"

Lovingly cared for 2 B.R. one level YEAR ROUND SUN PORCH & SPACIOUS L.P. (GREAT!) Heated wrkshp, Storage bldg, Greenhouse, and drive. ON 1.37 AC. & surrounded by large a... \$165,000



AFFORDABLE HOME \* VENDOR LEAVING ISLAND!  
 ON 2 AC. + ALL DAY SUN! MOBILE with 4B.R. DEN & F/P. Large, NEW SOLARIUM ADDITION! NEW Cedar wrkshp. & Storage shed. 20 G.P.M. WELL + Large, SPRING-FED POND. All very attractive at \$129,900

### COZY COTTAGE STYLE \* RURAL CHARACTER

Older 3 B.R. across fr. St. Mary Lk. LARGE KITCHEN, 3 Pc. Ens. in M.B.R. EASY TO HEAT. VERY SUNNY 1 ACRE. Fruit bearing trees, Heated wrkshp., Greenhouse, Raised Beds. A Charming buy \$132,500

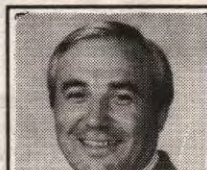
### CUSTOM BUILT FOR OWNER

FIRST TIME OFFERED FOR SALE! IMMACULATE & SOLID FAMILY HOME. SPACIOUS, 4 B.R. 2 BATHS, YR. ROUND SOLARIUM, 2 F/P, LARGE DECK. 'LAKEVIEW' & CLOSE TO TOWN! Dble. CARPORT, Smokehouse & Workshop, FAM. RM. lower lev. CIRC. DRIVE & ALL DAY SUN on Beautifully Landscaped .81 AC. QUIET AREA. VALUE with GREAT POTENTIAL \$169,000

Member - Real Estate Board of Greater Vancouver - M.L.S.

CALL GARY GREICO

Office: 537-5892  
 Fax: 537-5968



**ISLAND BOUND Real Estate Ltd.**



# SALT SPRING REALTY LTD.

149 Fulford-Ganges Rd. Box 69, Ganges, B.C. VOS 1E0

### DRIVE TO A BEAUTY



A 3 bedroom home with a beautiful living room, dining room, den and 3 bathrooms. Overlooks St. Mary Lake, sunny and private. \$219,000.

### FOR LOVERS OF LOG HOMES



2 bedroom log home on 4 acre picturesque, wooded lot, with stream, large garden and spacious lawn. Price \$149,000.

### DON'T MISS THIS OPPORTUNITY



4 bedroom home with 2.5 bathrooms, large livingroom with stone fireplace, jacuzzi and attached garage. Also a separate 2 car garage or workshop or storage area. Price \$155,000.

CALL JIM SPENCER  
537-2154  
OR DON ROBERTSON  
653-4347

### CHARMER



The lower level of this home would be ideal for an "in-home" professional office while you live upstairs. Priced at \$189,000.

### 3 BDRM HOME CLOSE TO TOWN



Great family home on quiet road featuring fireplace, large room with separate entrance. All for \$174,900.



3 bdrms, 3 bathrooms, jacuzzi in ensuite. Ponds, partially fenced, this home has it all on 5.37 acres. Priced at \$239,000.

CALL JOHN STEELE  
537-4606

### WATERFRONT IN DESIRABLE REGINALD HILL



Almost half an acre of beautiful south west facing waterfront, nicely treed, to build that dream home. You can watch the Fulford ferry pass by, while relaxing on your sundeck. \$196,000.

### OFFERS WELCOME BEAUTIFUL CHALET HOME



Privacy and valley views. An ideal family home with 2,752 sq. ft. of finished living area, including two fireplaces and expansive decks. Situated on 1.16 acres with completely paved driveway. Offers to \$239,000.

### OVER 5 ACRES OF INDUSTRIAL PROPERTY



Plus revenue farm: 3 workshops and new house. \$395,000.

CALL SHELLI ROBERTSON  
653-4347  
OR MARION MARKS  
537-2453

### SUNNY VESUVIUS - LARGE FAMILY HOME



4 bedroom spacious house injoying views of the valley from the decks. Deer-fenced garden area of fruit trees, paved circular driveway. \$197,500.

### MOBILE HOME - IN ADULT PARK



2 bed, double-wide set in adult park. \$69,000.

### REALLY GOOD VALUE - WELL CONSTRUCTED HOME



Sea glimpses from this 3 bedroom, 1 1/2 bath family home. Lots of storage with a full basement and carport. Set on .50 acre of parked-out grounds. Very private. \$139,900.

CALL SHELLI ROBERTSON  
653-4347  
OR MARION MARKS  
537-2453

### HOME FOR \$106,000? YES!



Level lot with various fruit trees. Smaller home with large bedroom, two patio decks. Single garage, AND you can walk to town. \$106,000.

### BUILDING LOT \$59,000

Building lot - level, easy to develop. Piped water, sunny exposure, walk to town. \$59,000.

### HOUSE AND SMALL ACREAGE



1.28 acre - mature 2nd growth forest behind the two bedroom lakeview home, paved drive, easy care landscaping. Single garage with workshop. Swimming across the road. \$149,000.

NORMAN ROTHWELL  
537-5103

### BUSINESS OPPORTUNITY



Well-established courier/freight business. Be your own boss. Start immediately. Instant daily income. Opportunity for growth and expansion. Training provided. Excellent opportunity!

### LARGE LAKEVIEW HOME



\$165,000 for a 6 bdrm. 2,700 sq. ft. lakeview home. View of St. Mary Lake.

### WATERFRONT; WATERFRONT



Waterfront lot for \$51,900 on Valdes Island - 1 acre, walk-on lowbank and sunny. Bring all offers.

CALL BOB HOWE TODAY  
653-4542  
537-4506

### SUNSETS & WATERFRONT



Large solid house needing TLC. 4.32 private acres. Great swimming beach, outstanding sunsets. Minutes from Ganges. \$375,000.

### OUT OF THIS WORLD!



This large acreage boasts one of the most spectacular views on the island. 8.59 acres. At least 1/3 useable for great gardening. Fruit trees. House needs finishing inside.

### SHOP AND COMPARE!



Centrally located 0.39 acre, garden a delight. Good solid family, or retirement home. Views of St. Mary Lake. Sunshine galore. Easy to show, \$159,000.

CALL FELICITY ANN GRANT  
537-2374  
537-5515

### GREAT FAMILY HOME ON 0.55 OF AN ACRE



This modular home has 3 bedrooms, 2 bathrooms, a large family & dining room, an asphalt roof and vinyl siding, approx. 1 1/2 years old. The property boasts 11 mature fruit trees. A large garden could be developed. The back yard is totally fenced and private with a paved driveway and a 12x24 shop. Piped water & sewer.

### PRICE REDUCTION, EXCELLENT VALUE



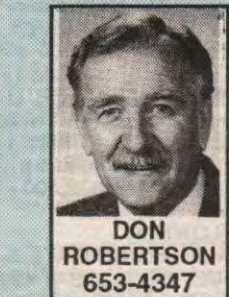
Almost at the end of the cul-de-sac, over 1,800 sq. ft. on 0.61 of an acre, 2 bedrooms, 1 1/2 bathrooms, full basmt could be developed easily. Paved drive and much more. \$139,500.

### GOOD RESIDENTIAL BUILDING LOTS

- \$65,000 water & sewer, .50 of an acre, building site cleared.

- \$69,000 over 3/4 of an acre, piped water, building site developed.

CALL MYLES WILSON  
537-4506



DON ROBERTSON  
653-4347



NORMAN ROTHWELL  
537-5103



MARION MARKS  
537-2453



FAX: 537-9797

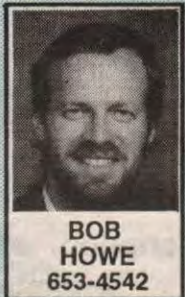
Victoria Dir: 656-5554 Vancouver Dir: 278-5595  
Fulford Branch Office (604)653-9555

Drop in or call our office for your  
FREE NRS Bi-Weekly Catalogue

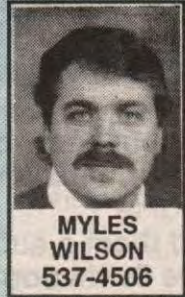
GANGES OFFICE  
537-5515



JIM SPENCER  
537-2154



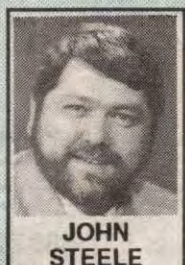
BOB HOWE  
653-4542



MYLES WILSON  
537-4506



SHELLI ROBERTSON



JOHN STEELE



GIL MOUAT



FELICITY GRANT



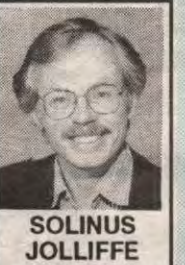
STRICK AUST



BRENDA CORNWALL



DENNIS O'HARA



SOLINUS JOLLIFFE



RUSS CROUSE