



Driftwood

Island Living Real Estate

SECTION

B

Long path brings Steele to island

In John Steele's first memory of Salt Spring Island, he is being kicked out of a restaurant for wearing blue jeans and long hair.

Luckily, the popular ex-manager of the Vesuvius Inn met some friendly islanders a few years later and decided to apply for a job managing the lounge at the Harbour House Hotel. The Steeles moved to the island in 1976.

By BILL WEBSTER
Driftwood Staff Writer

The path that eventually brought Steele to the island, however, led him to many parts of the world first, as he journeyed from his birthplace in Halifax, Nova Scotia.

"I'm a Bluenoser," he noted.

Steele moved to North Vancouver when his bank manager father was transferred from one coast to the other.

While at high school, he participated in various sports such as football and baseball.

"I planned on university after high school," he explained, "but went to Europe instead and got a much better education."

While travelling the continent on a student card, Steele obtained employment in a cigarette factory in Amsterdam. It was there he met his future wife Dovene.

But, said Steele with a grin, his European travels ended abruptly when he was deported from Denmark after being arrested for vagrancy. Back in Canada, he wrote letters to the young lady in Amsterdam and she came to Canada in 1972.

"It was a long-distance relationship," he said.

The Steeles moved to Prince Rupert where he served with the Coast Guard. At the same time, he took courses to obtain his "350 home trade ticket." That phrase translates to mean Steele could have skippered a vessel of up to 350 tonnes in coastal waters.

However, Dovene wanted to complete her university courses and the couple moved to Vancouver Island so she could attend University of Victoria.

Steele sought employment while his wife was in class, but he could not obtain the job he wanted. He heard about a couple of openings with the Coast Guard, but when he applied, he learned his name was number 325 on a list of applicants.

"I got out of the Coast Guard business," he said. "I decided I didn't want to wait 400 years to get a job."

Casting about for something to do, Steele decided to take a course at bartenders' school. He commuted to Vancouver during the week and spent his weekends in Victoria. While taking mixology training, Steele learned how to mix drinks, how to manage a bar and how to cage tips from customers.

ISLAND Profile

Tip-caging was an integral part of the course, he noted. During his training he met and befriended Tony Gerussi, brother of television personality Bruno Gerussi. After graduation, Gerussi tipped Steele about a job managing the lounge at Harbour House Hotel on Salt Spring Island.

Keeping in mind his earlier memory of Salt Spring, he was uncertain whether or not he should move to the island. However, he met a group of islanders in a Victoria pub whose friendliness convinced him to take the step.

While he managed the Harbour House lounge, Steele also worked part time at Vesuvius Inn and began a courier service

on the island.

He also indulged his enjoyment of sports by playing darts and softball. Although he was a baseball pitcher in a mainland league, he ended up in a different position playing fastpitch on Salt Spring.

At the urging of friends, he joined the Driftwood nine.

"They needed a first baseman," he recalled, "but they couldn't find one, so they asked me."

Steele said he never really thought about why he enjoys living on Salt Spring.

"It's nice to be in a community where you wave at friends as they go by in cars. You can't do that in the city," he said.

Steele became manager of the Vesuvius Inn on April 1, 1985.

But now, after 15 years of work in bars and pubs, he is moving on to other pursuits. Steele took training as a real estate agent and is in the process of obtaining the last requirements for working in that field.

"It was time for a change," he said.

Steele was one of 1,800 people enrolled in the real estate course. When examination time arrived six months later, there were only 900 people remaining in the course. Of that number, only 650 passed the exam.

Steele credits Vesuvius Inn owner Mike Hobbes with encouraging him to hang on to a positive attitude about life.

"He stressed that everything has a positive side," Steele said, "such as getting into real estate when a recession is going on."



John Steele

Driftwood photo by Bill Webster

INSIDE

ON TAP: See what's happening on Salt Spring in the Arts and Entertainment Section Pages B2 and B4.

GOOD HEALTH: Columnist Peter Bennett discusses effective ways to prevent disease. See Page B10.

Johnson discusses new play

Canada's Native Indians will be explored in a series of readings presented by Active P.A.S.S. at Mahon Hall next weekend.

Salt Spring resident Sandi Johnson has compiled extracts from her manuscript *The Comfort of Angels*, a fictional book based on her experiences working with Ojibwa Indians in Ontario. Between 1980 and 1983, Johnson was employed in a managerial capacity at the Ne Chee Friendship Centre in Kenora.

The *Comfort of Angels* starts at 8 p.m. on January 17, 18 and 19. Johnson is joined in the production by Lynda Jensen, Dawn Luker and Yarrow Sheehan.

Tickets are \$5 at the door, with proceeds being donated to ArtSpring. Active P.A.S.S. asks parents to not bring youngsters, as the show is not suitable for children under 12.

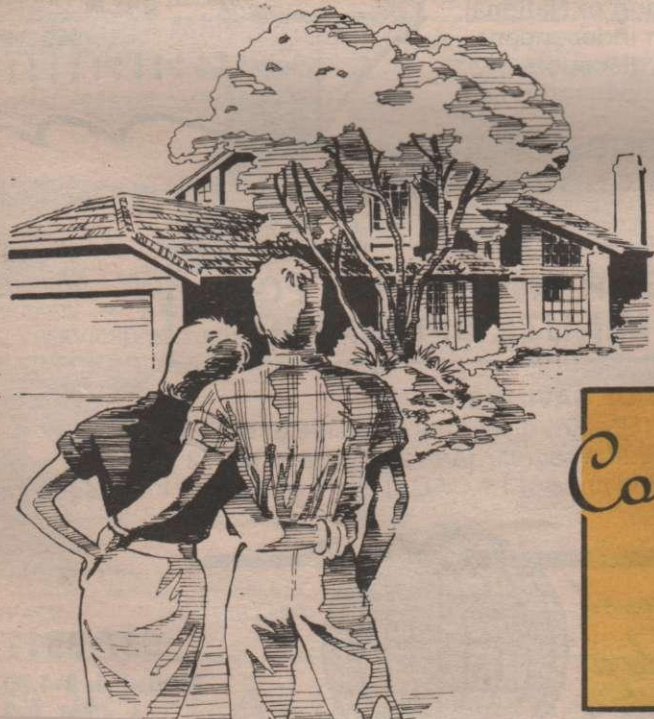
Johnson has described below some of her experiences and thoughts on her work and the culture she was immersed in during her years in Kenora:

By SANDI JOHNSON
Driftwood Contributor

If I attempted to articulate why I wrote *The Comfort of Angels* I would probably say it is because I think all people matter. Those I have written about are insignificant people — the least, the last and the lost.

Many Native Indians know they are not important to society and they feel invisible. As it has been said, "society holds up a mirror to us. If people don't see you it is like you are not really there."

COMFORT OF ANGELS B2



Your weekly guide to
GULF ISLANDS PROPERTIES

Compliments of:



REALTOR®

Driftwood

ARTS AND ENTERTAINMENT

COMFORT OF ANGELS

From Page B1

I hope that when we listen to their story, they will start to belong. If there is distortion, the distortion is in the setting. These people have so little it is difficult for us to perceive the battle they wage.

Visiting is an important aspect of Indian culture. They also consider it essential that all life should be honoured. For this reason, everyone who visits an Indian friendship centre is treated with respect simply because he is a human being.

Many of those frequenting an Indian friendship centre are part of an invisible sub-culture that society in general does not want to acknowledge. The less a person had, the more I had to look at them only as a human being. These were the people no one wanted, those considered to be ugly and unacceptable.

It was a humbling experience that offered no room for pretence. These were human beings who desired acceptance, dignity and whatever meagre achievement was possible for them. It is a magnificent victory that some of these people retain the magical desire to laugh and show affection.

The friendship centre was a microcosm of the native community and of society in general. A noticeable difference was that where there are Indian people, there is humour and laughter floating here and there. Though the people shared the universal dimensions of human needs, they also experienced the crippling burden of poverty.

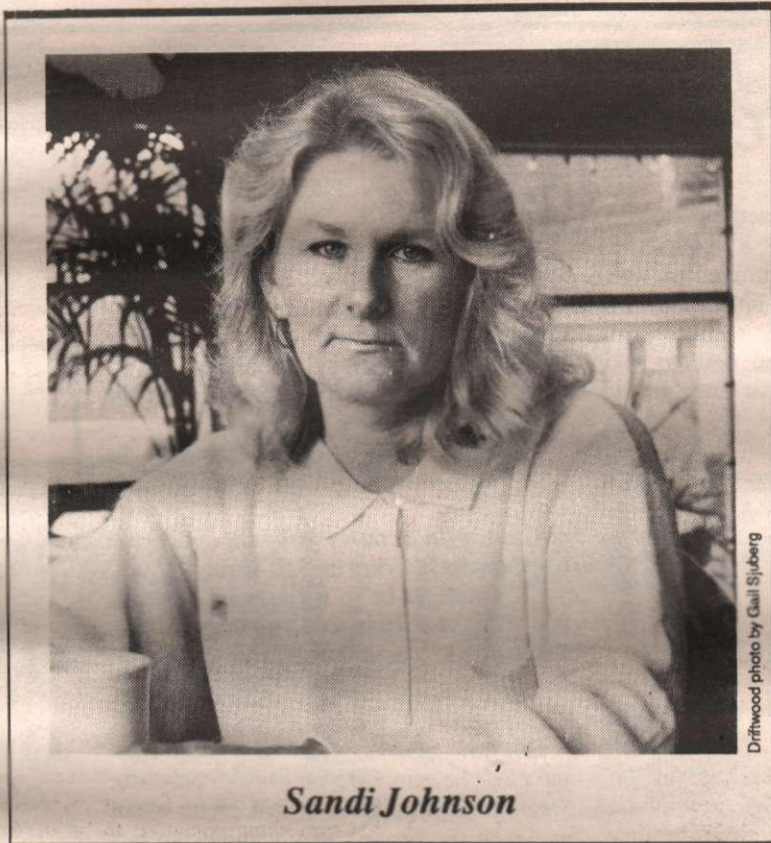
Those who bear the burden of poverty cannot hide behind the facade of success — the paucity of their lives is exposed to all. The same negative processes present in all society were also evident here. There was social breakdown manifested in alcohol abuse, violence and neglect.

The suicide rate among Indian people is six times the national average. For people with absolutely nothing, the only choice they have is often the one between life and death.

I saw the effort of these people as they tried to protect their lives by moving forward. Their endeavours were consistent with what was highest in the human spirit.

I saw outcasts like Moses Bottle who had a mission in life: he said he was a philosopher and a street politician. Moses wanted to be like Superman — to rise up in the air and save the people.

There were elders whose wisdom was soothing. Daniel John was capable of unconditional love for his wife: "He gathered her in the branches of his strong arms; held her until something flowed between them, a softness, like wind on a meadow."



Sandi Johnson

Driftwood photo by Gail Sjöberg

Annie Papasse was an old woman who had found the way to her power. She was not afraid. There was nothing that could hurt her, nothing that could beat her. She had already seen it all.

And there was Josephine Littledeer who was a big, gentle woman who liked to decorate herself with a ribbon or a rhinestone pin. She died one Christmas when she tried to walk the 50 kilometres to her home.

I believe this work is about possibilities. If we can respond to the efforts of these people to claim their humanity, we will become more whole and more aware of the connectiveness between things. The earth is essentially one breathing organism where all that lives is connected. Humanity forms an inseparable part of organic life on earth.

The true spirit of a people is in what they love most. Though land is the spiritual centre of Indian culture, we all share intense environmental concerns. Respect for the earth and all that lives is essential for the survival of our planet.

The survival of Indian people is due to the same resilience inherent in their ancestors.

Indian people are tired of being ignored. Last summer, frustrations erupted in the armed confrontation at Oka. Until there is progress for them, there will likely be confrontation. Indian people are struggling to gain control of their lives. They wish to fulfil their responsibility to their Creator and live healthy and productive lives as citizens of Canada.



THE CAT PRESENTS...

Breakfast

from 7:30-11:00 am
starting Thursday, Jan. 10.

THE CHESHIRE CAT

COMFORTABLE SURROUNDINGS!

537-4034

170 Fulford-Ganges Rd.

WOLFE-MILNER & ASSOCIATES

BRITISH COLUMBIA LAND SURVEYORS

P.O. Box 3
Ganges, Salt Spring Island

B.G. Wolfe-Milner, BCLS
537-5502

HARBOUR HOUSE HOTEL

Guadalajara Harry's Lounge
OPENS DAILY 4 PM
PUB MENU UNTIL 10 PM

Harry's Boatworks Pub
OPENS DAILY 11 AM
Entertainment Friday & Saturday, Jan. 11-12

"THREE MAN GANG"

HARBOUR HOUSE
COLD BEER & WINE
11 AM-11 PM 7 DAYS A WEEK



537-5571

At the head of Ganges Harbour

Admiralty Bay Cafe
OPEN DAILY 7 AM-10 PM

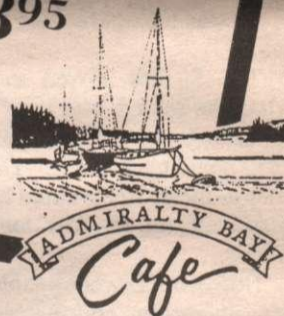
Thursdays:
PRIME RIB 6 pm 12.95

Fridays
LUNCH BUFFET noon-2 pm 7.95

Saturdays
SEAFOOD BUFFET
6-10 pm 18.95

Sundays
BREAKFAST BAR 10 am-2 pm 7.95

RESERVATIONS PLEASE



ADMIRALTY BAY Cafe

You're Invited to Join

The Travel Shop Cruise Club

Due to a recent affiliation with GIANTS (Greater Independent Association of National Travel Services) we can remain independent and yet give you the benefit of discounts normally available only to large consortiums.

RECEIVE UPDATED LISTINGS OF SPECIALS AS THEY OCCUR THROUGHOUT THE YEAR

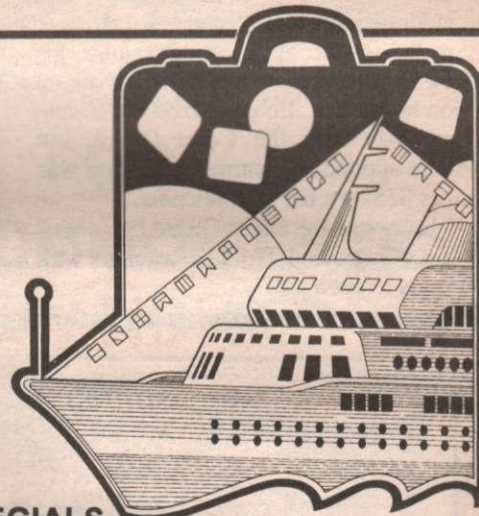
PLUS!

BE ON OUR PHONE LIST FOR LAST MINUTE SPECIALS!



EXAMPLES OF SAVINGS:

- 10%-15%-20% discounts on inside or outside cabins
- 1st person regular fare, 2nd person at 1/2 price
- 2 for the price of 1 • CAD at par • and many more specials!



Call us first!

537-9911
Mon.-Fri. 9-4:30

Entertainment at Moby's...

Michael Schelard DANCE BAND

Friday & Saturday, Jan. 11-12
8:30 pm-1 am

MOBY'S

marine pub 537-5559

120 Upper Ganges Rd.





NRS SALT SPRING REALTY LTD.

149 Fulford Ganges Road
 P.O. Box 69, Ganges, B.C. V0S 1E0
 Telephone: (604) 537-5515 Fax: (604) 537-9797
 Victoria Direct: 656-5554 Vancouver Direct: 278-5595

FULFORD HARBOUR



HORSES & HIKING

Over 700 wilderness acres of trails and country roads adjoin our unique 147 acre estate. Only 12 acreages of prime agricultural land have been developed, with 80 acres set aside as a private park. Prices start at \$67,500. Only four parcels remain to be sold.



Talk to Dennis O'Hara
 at our Fulford Harbour Branch
 653-9555 (office)
 653-4101 (home)

ASSUMABLE 11.75% MTG



1.08 private acres, magnificent views, easy care family home, close to lake, golf, beaches. Asking \$139,500 MLS. (The 29' sailboat is an extra bonus - going for \$19,500!!!)

EXCELLENT MOORAGE



Oceanfront view acreage 1.60 with 300' of seafront. Lot is in natural state and has gorgeous outlook. Situated close to ferry terminal and Ganges make this an ideal investment property. Call today. Asking only \$139,000 MLS.

CHATTERBOX CAFE



Yes, you can walk right in, be your own boss, make up your own menu!! Right in the heart of Ganges. Call today for further details on THE CHATTERBOX CAFE, an excellent opportunity. \$61,500 MLS. OFFERS.

BUYING OR SELLING
 CALL
 PAUL GREENBAUM
 537-5064 (24 HRS)

SOUTH END DREAM



3 bedroom, den, gazebo, workshop potential, pond, forest & fields. Private, yet close to ferry. You'll love this one!! Offers on new price of \$189,500. You can commute to Victoria from this one!! MLS.

28 ACRES WATERFRONT



On the wild side overlooking Saanich Inlet. In the heart of spectacular boating, fishing, diving waters, where wild life abound, come and enjoy the ambiance of this spectacular property. Located near Musgrave Landing. \$210,000 MLS.

PASTORAL ACREAGE



Close to St. Mary Lake and golf course, this lovely 5 acres awaits your development. Roughed in driveway and several building sites. Quiet and private. Come and walk this one today! \$57,900 MLS.

BUYING OR SELLING
 CALL LIANE READ
 537-4287
 PAGER 388-6275 #1042

ISLAND HIDEAWAY



This nearly new one bedroom home features fireplace, skylights, built-in vac and two sundecks, each with glass patio doors. Ideal as starter or retirement home or just a wonderful get-away. Excellent 15 gpm well. A little treasure close to ferry. .80 acre. \$98,900.

ATTENTION GARDENERS!!



3 bedroom newly renovated rancher, bright and cheery. Established garden at the rear with raspberries, strawberries and asparagus. Fruit trees bearing apple, cherry, plum, peach and pear. Best value on Salt Spring! .75 acre. \$113,900.

NEARLY 2-1/2 ACRES OF VALUE

Level and lightly treed property. Close to island amenities, including golf and tennis. Ideal recreational property, which will allow a mobile. Piped water and hydro at lot line. \$37,500.

MARION MARKS
 653-4347

TALL TREES & SEAVIEW



Make this property a rare commodity, generous 4.94 acre size, makes this property a must if you are looking for good quality, don't miss this one. \$98,000.

HOBBY FARM



Capture Island lifestyle at its best on this 4.30 acre farm. This property has everything you need to be an island farmer, from the cosy 2 bedroom cottage to the barn & fenced pasture, plus orchard, southern exposure and much more. \$159,900.

SUNSHINE & PRIVACY



Are 2 of the features of this home on 1.58 acre situated at the end of a cul-de-sac. 2 bedrooms, covered deck & an easy care property. \$119,000.

JIM SPENCER
 537-2154

BORDERS ON THE GOLF COURSE



Unique LOG CHARACTER HOME featuring extensive rock work both on the interior & exterior; a massive stone fireplace is viewed from both the kitchen & adjoining family room which boasts an insert & built-in wall oven; pine kitchen cabinets & a circling window overlooking the back yard make the large round kitchen a pleasure to be in; this country style home is complemented with oak floors throughout the dining, kitchen & family rooms, new carpets, suspended log beams throughout & landscaped. A BEAUTIFUL ENVIRONMENT. \$165,000 MLS.

SEAVIEWS



My first listing and it's a beauty! Two bedrooms, spacious living room on the sunny side of the street in the preferred Vesuvius area. Lots of storage area and priced at only \$132,900 MLS.

CALL
 JOHN STEELE
 537-4606

OCEAN VIEW PRIVACY



2 bedroom home tastefully decorated, with paved driveway. Two bathrooms, deck with glass panelled railing and storage/workshop. Features brick heatilator fireplace and low maintenance gardens. Includes washer and dryer, new stove & refrigerator. Too pretty to miss!!! .93 acre. \$149,000.

DON'T OVERLOOK THIS SEAVIEW PANABODE!



Lovely, 2 bedroom panabode lovingly cared for - shows like new. Located close to beach and features large deck, cosy heatilator fireplace and whirlpool bath. Includes fridge and stove. .48 acre. \$122,500.

OCEAN VIEW LOT



Excellent Maliview lot within walking distance of the ocean. High and dry with ocean view. Build your new home or investment duplex in this good location. On water and sewer. .58 acre. \$52,000.

SHELLI ROBERTSON
 653-4347

PARKER ISLAND



10 acre waterfront properties, priced from \$57,000, terms available. These lots are selling fast, don't miss this opportunity!

PERFECT FAMILY HOME



Located on a quiet cul-de-sac in sunny Vesuvius. Immaculate inside and out, 4 bedrooms and family room with ocean views. Lower floor has excellent potential for in-law suite. Swimming pool, garden, 8 appliances, all drapes, greenhouse, hot tub, built-in vacuum. An excellent property. Many extras. \$164,900.

GOOD VALUE



3 bedrooms, well kept, many features, corner lot, located close to St. Mary Lake. Price reduced \$139,900.

MEL TOPPING
 537-2426

VIEW OUT TO THE HILLS



1.25 acres - large three bedroom home. Good south exposure, large shop (30 x 20) with power and water. Excellent value at \$109,000 MLS.

VESUVIUS BAY CHARMER



Super location and a super home in the warm Vesuvius Bay area. Home in top condition, a joy to show. Easy care yard with numerous fruit trees that looks first rate. \$99,900 MLS.

GREAT STARTER HOME OPPORTUNITY



Looking for a quality built two bedroom family home? This one's for you!! Bright and cheery on a large one acre lot. Spacious bedrooms. The use of wood flooring and skylights make this a must to see. \$119,000 MLS.

NORMAN ROTHWELL
 537-5103

WATERFRONT



LOW BANK - 90', 2 BDRM HOME, FULLY SERVICED, \$255,000 MLS.

WATERFRONT ACREAGE



5 ACRES LONG HARBOUR, PRIVATE, EXCELLENT MOORAGE. \$200,000 MLS.

FAMILY HOME



OPEN STYLE, 1 YEAR OLD, 3 BDRMS, 3 BTHRMS, 3 LEVELS. \$239,000 MLS.

WHERE EAGLES LIVE



VIEW, VIEW, VIEW, 10 ACRES, PRIVATE WITH SERVICES. \$109,000 MLS.

GIL MOUAT
 537-4900

COMMUNITY

Applications for fringe festival should be filled out quickly

Applications for the seventh annual Vancouver Fringe Festival are now available.

Produced and sponsored by *Theatrespace* in Vancouver, applications for out-of-the-ordinary theatrical productions are accepted on a first-come, first-served basis. The first 90 applications received by *Theatrespace* will be accepted into the festival and all others will be

placed on a waiting list until space becomes available.

The 1991 Vancouver Fringe Festival is set for September 5 to 15.

Theatrespace says the Vancouver Fringe Festival provides "an unequalled opportunity to perform" and "showcases some of the most exciting and innovative theatre the world has to offer."

Venues, staging, basic sound and

lighting, technical assistance, box office management and publicity are provided. Participants also receive box office proceeds from their performance.

Applications and information can be received from *Theatrespace* at 873-3646 or by writing to them at Suite 18, 2414 Main Street, Vancouver, B.C., V5T 3E3. The deadline for applications is March 1, 1991.

Interested participants are urged to submit applications as soon as possible. In 1990, the first 90 spaces were filled within three weeks.

Theatrespace also provides information on future fringe festivals in Victoria, Edmonton, Saskatoon, Winnipeg, Toronto and Montreal.

Haiku poetry contest is for youthful poets

As young minds ponder / imagery of inner worlds / they create Haiku.

And when the inspiration succeeds, children can enter the results in Japan Airlines (JAL) Haiku poetry contest. Competition for the best Haiku is open to all children in British Columbia in Grades One to Seven. Contest closes March 29, 1991.

JAL ran a similar competition in 1986 in conjunction with Expo '86. Each year the airlines sponsors a Haiku contest in various parts of the world.

Haiku developed in 17th-century Japan as a short, imaginative way of expressing feelings about the world. While the Japanese style follows a rigid format, Haiku as generally written follows a short-longer-short rhythm in three lines and is not required to rhyme.

School children in B.C. hold a familiarity with haiku as it forms part of elementary teaching both as poetry and English exercises.

Entries will be judged to select the top 20 selections which will receive book prizes. Schools where the winners attend will be awarded a \$200 bursary.

HARDWOOD
4" THICK CARVING WOODS
 • Basswood
 • Jelutong
 • H. Mahogany
 • Teak
 • And others
WESTWIND HARDWOODS
 10230 Bowerbank, Sidney
656-0848

C U
 AT THE **MOVIES**
 AT CENTRAL HALL
 FRIDAY thru TUESDAY,
 JAN. 11-15
 8 PM
The Russia House
 with Sean Connery
 & Michelle Pfeiffer
MATURE
 537-4656

Sweet Arts
Chatterbox Cafe
 CAPUCCINO, LATTE, MOCHAS... "The finest coffee on the island."
 Delicious cakes & pastries... home of the MULTI-GRAIN BREAD
FULL VEGETARIAN FARE.
 Mon-Sat.
 8 am-5 pm
537-4127
ALL DAY BREAKFAST
 112 Lower Ganges Rd., Ganges
 Salt Spring Island

Golden Island
 CHINESE RESTAURANT - LICENSED
 LUNCH Tues.-Fri. 11:30-2
 DINNER Tues.-Thurs. 5-10
 Fri.-Sat. 5-11; Sun. 5-9
DAILY LUNCH SPECIALS
 Ask about our weekend **DINNER SPECIALS**
 Closed Mondays
 Upper Ganges Centre, Ganges **537-2535**

FULFORD INN
PUB OPEN SUNDAYS
BIG SCREEN T.V.!
SPECIAL ROOM RATES:
\$35 plus tax
 Phone **653-4432**

The Blue Heron Dining Room will be closed until further notice.

KARAOKE NIGHT
 IN THE PUB
every Saturday night!
 (except Feb. 23)
CASH PRIZE FINALS
MARCH 2
 Bring your friends to cheer you on!

THE SUPPER PUB
 Serving great meals daily
11:30 am-9:30 pm
 REASONABLE PRICES TOO!

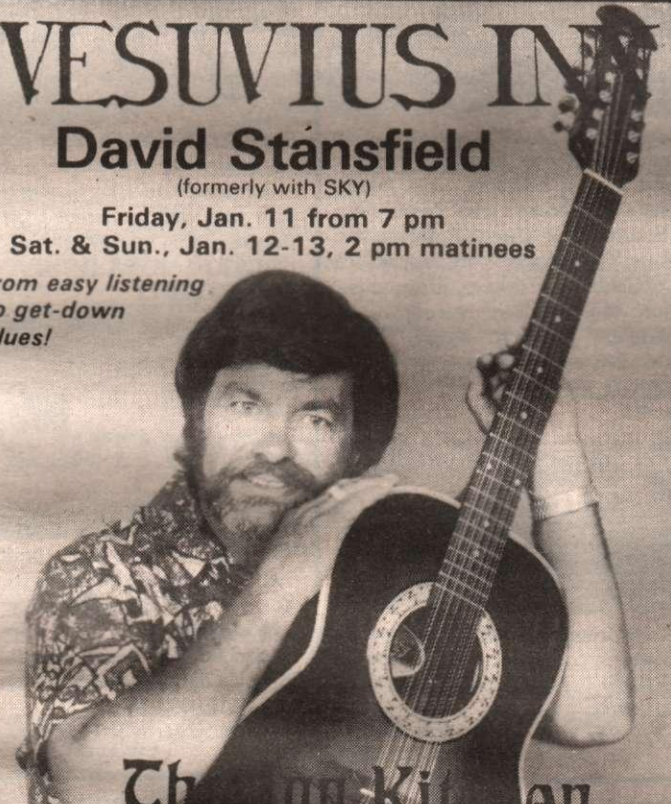
YOU KNOW YOUR RIGHTS . . . BUT DO YOU KNOW YOUR WRONGS?

These are the criminal charges you face if you drink and drive in B.C.

- Driving with a Blood Alcohol Content (BAC) in excess of .08%.
- Driving While Impaired (even if your BAC is BELOW .08%).
- Failure to Provide a Breath or Blood Sample.

DRINKING DRIVING COUNTERATTACK

VESUVIUS IN
David Stansfield
 (formerly with SKY)
 Friday, Jan. 11 from 7 pm
 Sat. & Sun., Jan. 12-13, 2 pm matinees
from easy listening to get-down blues!



Thompson

SALE!

THIS FRIDAY, JANUARY 11

2 for 1
Prime Rib Dinner
 Slow roasted Prime Alberta Grade A Beef
 Yorkshire Pudding, Baked Potato & Garden Fresh Vegetable

OR

Salt Spring Lamb
 Roasted to perfection, served with our own Mint Sauce,
 Roast Potato and Garden Fresh Vegetable

Waterside Bistrot

On the waterside Gasoline Alley
537-4611

NEW DINNER HOURS:
 Sun.-Thurs. 5-8
 Fri.-Sat. 5-9



SALT SPRING HEAD OFFICE
537-9981
537-9551 (FAX)

GALIANO ISLAND
539-2002 (Res & FAX)

MAYNE ISLAND
539-5527 (Res)
278-1388 (Pager #5073)

PENDER ISLAND
629-6417 (Res) 629-6494 (Res)
629-3366 (FAX)
655-3411 (Toll Free from Victoria)

SATURNA ISLAND
539-2121 (Res)
253-7596 (Pager #2121)

Selected Properties

THIS WEEK'S FEATURED GULF ISLANDS LISTINGS



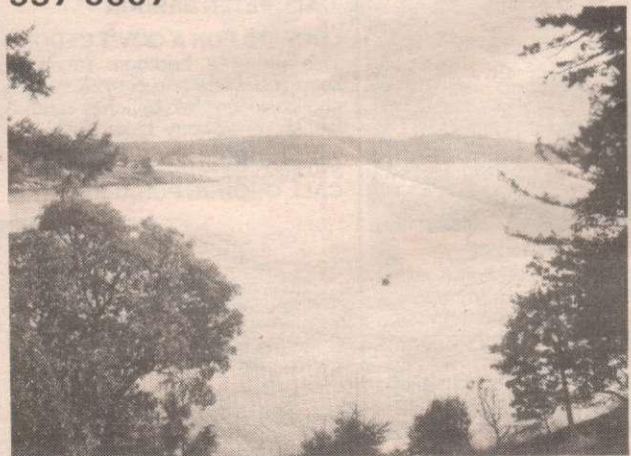
LOW BANK WATERFRONT MAGIC

This holding offers an idyllic lifestyle — spacious, comfortable, well-built ranch style home sitting on a recreation paradise of 2.94 acres with 350 feet of oceanfront which enjoys a protected bay. Call for an appointment to view. \$325,000MLS.
CALL ANNE WATSON
537-2284



SUN LOVER'S PARADISE

West Coast contemporary open living design home on 2.40 acres. Unique woodwork and finishing throughout. 1500 sq. ft. of new sundecks, sunny southwest exposure, ideal for artist retreat, expansive mountain views. \$139,900.
CALL EILEEN LARSEN
537-5067



NEW YEAR'S SALE!

Three bedroom home on Scott Point. Reduced for quick sale. The waterfront is ready for moorage improvements and will provide deep water shelter for your yacht. See George now — bring offer! Only \$239,500 MLS.
CALL GEORGE PUHARICH
537-9111



ENTICING FULFORD WATERFRONT

Charming spacious residence, 1.15 acres, breathtaking views extending forever, encompassing Mt. Baker and Islands. Well-maintained attractive grounds, greenhouse, workshop, delectable supply of fruit trees, boatramp, mooring buoy, beachhouse, peaceful quiet area, and chickens are included!! \$369,000 MLS.
CALL FELICITY ANNE GRANT
537-2374



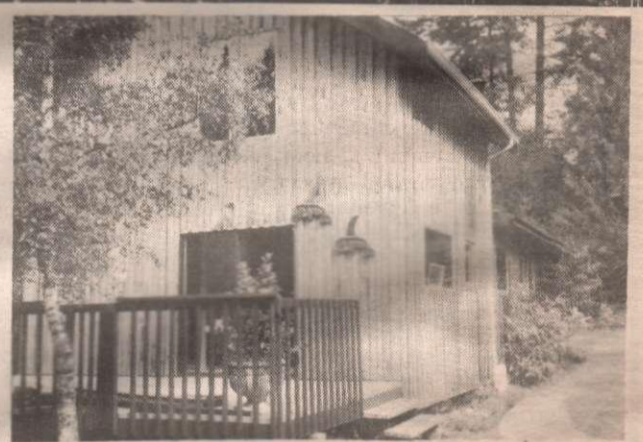
REMOTE BEAUTIFUL ACREAGE

Only a 30-minute drive up Musgrave Rd. from Fulford Harbour will take you to this remote, unserviced property featuring south exposure, excellent ocean views towards Vancouver Island, beautifully treed, with some selective clearing, 20 acres to "get away from it all" and listed at less than \$3500 per acre. MLS.
CALL DARLENE O'DONNELL
653-4386



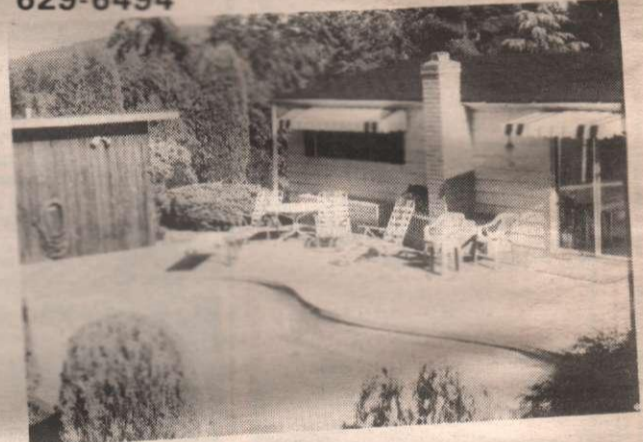
THE THREE L'S

Location! Location! Location! In a desirable area, very close to town, this 3 bedroom rancher is perfect for a growing family. Plus a 2 bedroom cottage, gives you extra space. Trees, fields, gardens, all inclusive on 2.97 acres. \$199,000 MLS.
CALL SARA FEE
537-4536



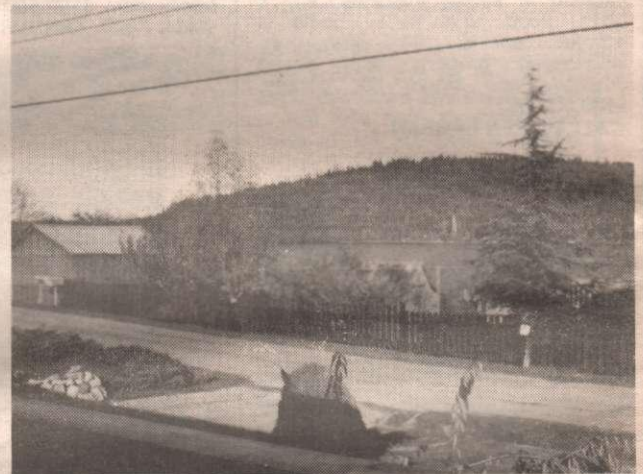
HOUSE AND ACREAGE

This recently remodeled 3 bedroom house on 1.18 acres features hardwood floors throughout, 2 bathrooms, wood stove and is on municipal water. The acreage is sunny, level, and landscaped, with fruit trees and ornamental trees. Also included is a workshop with studio loft. \$98,000 MLS.
CALL ALEX FRASER (Pender Island)
629-6494



SNOW STORM SPECIAL!

Watch others struggle to get home during the next snow storm. Walk home in minutes to the warmth and comfort of your own home. This spacious three bedroom home represents excellent value. Make a smart move today!!! \$125,000 MLS.
CALL TOM PRINGLE
537-9996



SUNNY LAKE VIEW

Large level lot with open space and two storey home — great expansion potential. Three bedrooms, two bathrooms, family room, new carpets, on lakefront road. \$133,900 MLS #25827.
CALL MARY SMALL OR FELICITY GRANT
537-5176 or 537-2374



BUYING OR SELLING, CALL US

537-9984

THE LARGEST REAL ESTATE ORGANIZATION IN THE WORLD. EACH OFFICE IS INDEPENDENTLY OWNED AND OPERATED.

® and ™ Trademarks of Century 21 Real Estate Corporation.

SALT SPRING ISLAND OFFICE

1101 GRACE POINT SQUARE
P.O. BOX 454
GANGES, B.C. V0S 1E0
537-9551 (FAX)



ARTHUR GALE
Sales Rep.
537-5618



SYLVIA GALE
Sales Rep.
537-5618



SARA FEE
Sales Rep.
537-4536



EILEEN LARSEN
Sales Rep.
537-5067



BECKY LEGG
Sales Rep.
537-5870



BRIAN BETTS
Sales Rep.
537-5876



JANET MARSHALL
Sales Rep.
537-5359



PAT JACQUEST
Sales Rep.
537-5650



GARY GREICO
Sales Rep.
537-2086



DARLENE O'DONNELL
Sales Rep.
653-4386



FINN
Sales Rep.
537

SALT SPRING ISLAND PROPERTIES



CHANNEL RIDGE - PHASE 1
Build your dream home on this exceptional 6 acre view property, located on prestigious Sunset Drive. Vendor financing available. \$95,000 MLS.
CALL EILEEN LARSEN



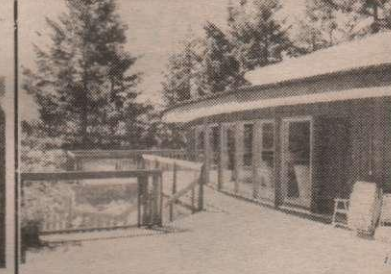
TIRED OF RENTING?
Talk to us about financing possibilities to put you into this cosy, comfortable 2 bedroom single-wide situated in mid-island park. Pad rent \$185/mon. Realistic price. MLS.
CALL SYLVIA GALE



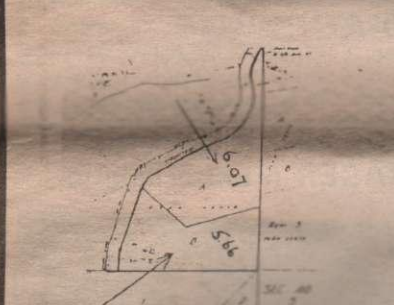
CHARMING HOME TUCKED AWAY ON PRETTY ACREAGE
This two bedroom quality house has so much to offer. French doors, hardwood flooring, heatilator fireplace, five appliances included. 12 x 20 storage shed, arable 2.36 acres with pond. \$169,000 MLS.
CALL FELICITY ANNE GRANT



"WATCH THE BOATS GO BY"
Family home surrounded by large rural acreages with fine views of Trincomali Channel. \$126,500 MLS.
CALL GARY GREICO



OVERLOOKING FULFORD HARBOUR
This ocean view home is packed with features such as hot tub with a view, heat pump, solar heat storage, huge sun decks, wet bar, rock garden, paved driveway, and minutes walk from Fulford ferry. Call now. \$249,000 MLS.
CALL BRIAN BETTS



PEACEFUL SOUTH END
Top quality acreages - 6.07 and 5.66 acres. Asking \$69,000 each. Treed and easy to develop. These properties are magic! Try your offers. MLS.
CALL PETER BARDON



ACREAGE NEAR FULFORD HARBOUR
Very pretty 5 acres, beautifully treed with stream through corner. Road roughed in to sunny, cleared & seeded area with pond. Located in quiet area near 2 lakes. \$59,000 MLS.
CALL DARLENE O'DONNELL



CHANNEL RIDGE - VIEWS OF SANSUM NARROWS
1.96 acres of view property in this distinctive subdivision of quality homes. Wind up the driveway to spectacular building site with adjacent level garden area. Sunny and quiet lot. 18 Teale Place. \$69,900.
CALL FELICITY ANNE GRANT



BUILDER'S SPECIAL
Gently sloping building lot located within walking distance from ocean access. Nicely treed for privacy with seawiew. Hydro at lot line. Driveway roughed in. \$35,500 MLS.
CALL TOM PRINGLE



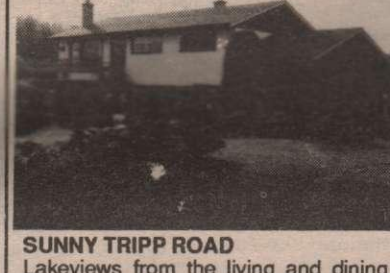
SUNNY TWO BEDROOM HOME
In a quiet, sunny cul-de-sac on a pleasant .61 acre is this two bedroom home with daylight basement. Fruit trees, paved driveway, lots of deck area and carport are some of the features. Please call today for an appointment. Reduced \$110,000 MLS.
CALL ANNE WATSON



PERFECT FAMILY HOME
Located in sunny Vesuvius, this 4 bdrm, 2000 sq.ft. family home is situated on a .94 acre, fully landscaped property with paved driveway and single car garage. \$139,500 MLS.
CALL EILEEN LARSEN



SUPREME SECLUSION
Newly built quality home, privately sited on 5 acres of sunny, arable land. Enjoy evenings by the fire, or soak in the luxury of a jacuzzi tub. Pine ceilings, tile flooring, custom cabinets, the latest appliances, and a super family room. \$192,500 MLS.
CALL PAUL TANNER



SUNNY TRIPP ROAD
Lakeviews from the living and dining area, agricultural land reserve from the kitchen. 3 bedrooms, den or family room, workshop. Well cared for property with a selection of shrubs, fruit trees and bulbs. \$133,900 MLS.
CALL FELICITY ANNE GRANT OR MARY SMALL



ROOM TO ROAM
2.97 acres holds a lot of trees, fields, and gardens. A 3 br rancher plus a 2 br cottage, gives room to breathe. Location! Location! Location! So close to town yet quiet and peaceful. Call me, Sara Fee. \$199,000 MLS.
CALL SARA FEE



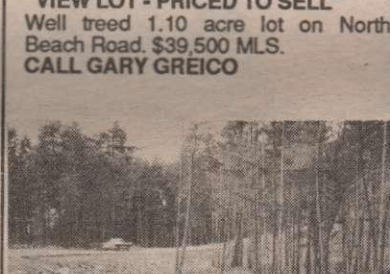
QUIET SIDESTREET IN GANGES
A very charming two or three bedroom home. Spacious living room, dining room and kitchen. Over 1800 sq.ft., this home is immaculate inside. Try your offer! Asking \$124,900 MLS.
CALL PETER BARDON



BEST VALUE
For your real estate dollar! New 2 bedroom, 2 bathroom home sitting on top of a rocky knoll, overlooking 2.17 parklike acres. Tiled counter tops, radiant heat and handmade wooden windows, and a separate garage/workshop are just a few special features of this home. \$125,000. Vendor may carry.
CALL BECKY LEGG



GOLDEN SUNSETS & SAILS
High quality custom home with southern exposure and exceptional seawiews. Easy care exterior & landscaping leave you time to bask in the sun, soak in the hot tub or enjoy the sauna. For the discriminating purchaser! \$285,000 MLS.
CALL PAT JACQUEST



"VIEW LOT - PRICED TO SELL"
Well treed 1.10 acre lot on North Beach Road. \$39,500 MLS.
CALL GARY GREICO



GREAT RETIREMENT HOME
One level easy access home with wonderful lake and ocean views. Three bedrooms. Spacious living room and dining area. Workshop and carport. Easy care private lot beautifully landscaped with automatic watering on computer timing. \$175,000 MLS.
CALL AILSA PEARSE



LOOKING FOR A GOV'T SECOND
This pretty 2 bedroom rancher will keep you warm and cosy. Across from public access to beaches and boat launch on St.Mary Lake. Call George now - make appointment to view! \$103,000 MLS.
CALL GEORGE PUHARICH



NEW YEARS SALE!
Vendor says sell so we're clearing this Channel Ridge lot at cost! Almost an acre with all services and an approved building plan and blueprints. Immediate possession. Only \$44,000.
CALL GEORGE PUHARICH



100 HILLS - OCEAN VIEW
Over 5 acres in this popular area of Salt Spring. If you've always wanted a place for that horse or other animals, check this one. 3 bedroom, 2 bath home with fenced garden are and fruit trees. Call me. \$175,000 MLS.
CALL BRIAN BETTS



WOODY COTTAGE
Cute & cosy brand new 2 bedroom home located close to Ganges with cablevision & water system. 0.87 acre is ready and waiting for landscaper's touch. A great starter home with good value. \$99,500 MLS.
CALL BECKY LEGG

No one covers the Gulf Islands like we do.



MLS
MULTIPLE LISTING SERVICE
PRE-APPROVED MORTGAGES THROUGH
Metropolitan Trust
LISTINGS ADVERTISED DAILY ON
Rogers Cable TV

- | | | | | | | | | | |
|----------------------------------------------|------------------------------------------------|--------------------------------------------------|-----------------------------------------------|--------------------------------------------------|-------------------------------------------------|----------------------------------------------|----------------------------------------------|--------------------------------------------------|--------------------------------------------------|
| | | | | | | | | | |
| ANNE WATSON Sales Rep. 537-2284 | BEV JOSEPHSON Sales Rep. 537-2532 | GEORGE PUHARICH Sales Rep. 537-9111 | AILSA PEARSE Sales Rep. 537-9261 | PETER W. BARDON Sales Rep. 653-4576 | FELICITY GRANT Sales Rep. 537-2374 | PAUL TANNER Sales Rep. 537-4509 | TOM PRINGLE Sales Rep. 537-9996 | MARY SMALL Principal Agent 537-5176 | TOM HOOVER General Manager 537-5918 |

SALT SPRING ISLAND PROPERTIES



ESTATE SALE
Impressive architect designed residence situated on 10 private wooded acres with southern exposure and tranquil views. Quality craftsmanship and spacious rooms throughout. Four bedrooms, three bathrooms, many unique features. \$289,000 MLS. CALL SYLVIA GALE



NEAR THE OCEAN
Two lots side by side, .64 acre each. Sunny, level, quiet area, some sea views, and both on water system and hydro. Pick a winner! Now listed at \$49,900 each MLS. CALL SYLVIA GALE



TAKE THE WORLD GO AWAY
Family 3 br contemporary hideaway sitting on a ridge soaking up the sun. Wonderful expansive views of Active Mt. Baker, sea & mountains. Easy care 2 acres make this an ideal retreat! \$138,000 MLS. CALL PAT JACQUEST



COUNTRYSIDE ELEGANCE
Quality predominates in this spacious view home near Ruckle Park. Filled studio, plus room for professional, or B & B. Gentleman's "Farm" of 9 acres with pasture, beautiful ponds, large greenhouse, barn, PLUS access! \$275,000 MLS. CALL PAUL TANNER

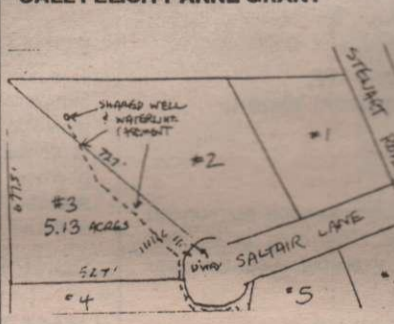
ORDABLE CHANNEL RIDGE
Acres of parklike property on country road in an area of quality homes. Close to Vesuvius, Mary Lake, golf and tennis. Enjoy walks that will take you wandering for hours. \$63,500 MLS. CALL FELICITY ANNE GRANT



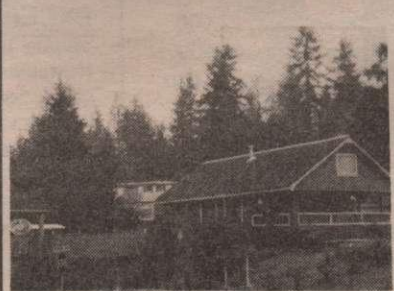
SENSE SATIONAL!
Come to Maracaibo - private marina, swimming lagoon and numerous other amenities. Over 6 acres of SW facing park-like property forms the private setting for this uniquely designed one level home. A serenely beautiful pond is the focus, with 200 ft. of glass doors opening to the surrounding deck. \$375,000 MLS. CALL SARA FEE



A STEAL TO BE SURE!
.48 acre in sunny Vesuvius on cul-de-sac in tranquil area of good homes. Municipal water, hydro to lot line, driveway in and property prepared for building. Drive by Lot 13, Graham Drive. \$49,900. CALL FELICITY ANNE GRANT



BUY NOW - BUILD LATER
Over 5 acres of pretty hillside overlooking Stowe Lake area. Driveway access is in. Water from 22 gpm spring on adjoining lot. Purchaser is land rich and cash poor - make an offer! Reduced, \$59,500 MLS. CALL GEORGE PUHARICH



SECURE ISLAND BUSINESS
* now offered at \$325,000
* vendor financing
* residence/office for owners on site
* easy care and maintenance
Full financial records and statements will be disclosed to qualified purchasers. MLS. CALL GARY GREICO



SUPER NATURAL OCEANVIEW PROPERTY
This picturesque 1.77 acres of very sunny properties lies in a very unique setting. Very quiet area on a cul-de-sac. Expansive southwest ocean views. \$75,000 MLS. CALL TOM PRINGLE



WATERFRONT AT MUSGRAVE LANDING
.68 acre in natural tranquil setting. Access by gravel road or by boat, this strata development provides year round safe docks for property owners. Take advantage of being part of this unique lifestyle while still available. \$69,800 MLS. CALL BRIAN BETTS



A BEACH FOR WANDERING
This 3.42 acre waterfront has a magnificent primary building site with a sensational cottage site as well. Super sun, beautiful trees and a beach for wandering. Make a great family purchase. \$220,000 MLS. CALL ANNE WATSON



DOGWOOD ESTATES
Come and choose your 10 acre parcel now. Vendor financing available, 30% down for two years. Call Eileen for further info. Starting at \$69,500 MLS. CALL EILEEN LARSEN

CLOSE TO TOWN
Located close to town, this .33 acre lot is clear & level. Hydro, water, cablevision plus sewer to lot line. Easy walking distance to doctors' offices, hospital and shopping. Great place to start building! \$44,700 MLS. CALL BECKY LEGG



PRICE REDUCED
Great little business located in the heart of Ganges. "Matt's Meats" is a well established business specializing in quality imported cheeses, meats and Salt Spring Lamb. Very good pedestrian traffic. \$34,900 MLS. CALL BECKY LEGG

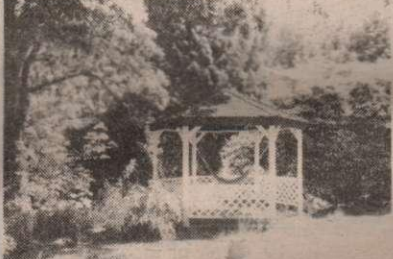


WHISPERING CEDARS
Looking for a well cared for 3 br home on a private, wooded 2+ acres? Full daylight basement for further development PLUS a super workshop for Dad or the craftsman. Don't miss out! \$149,000 MLS. CALL PAUL TANNER



SOMETHING SPECIAL!
Luxury waterfront townhome at exclusive Grace Point. Southern exposure, sun filled decks, well designed layout and exceptional architectural features. Private moorage available at your doorstep. \$325,000 MLS. CALL SARA FEE

HOBBY FARM REDUCED IN PRICE
This large old style family home is situated on 5.77 acres, overlooking a small pasture, wandering creek, fruit trees, duck pond and 2 large outbuildings. Great hobby farm or Bed & Breakfast potential. \$137,000 MLS. CALL BECKY LEGG



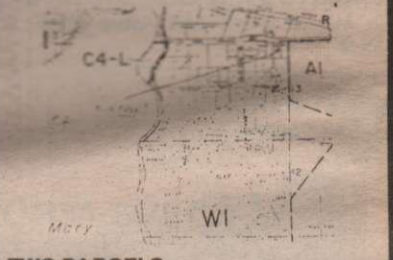
OLD WORLD CHARM
Walk to town or yacht club but return to this lovely 2 acre parcel with gracious grounds and spacious heritage style, 4 bedroom older home from which views of Ganges Harbour may be enjoyed. \$325,000 MLS. CALL PAT JACQUEST



MAGICAL MUSGRAVE
The only south facing waterfront lot for sale in this spectacular setting at Musgrave Landing. Ownership includes sheltered year round moorage at the private marina. A rare opportunity to own one of the best lots at Musgrave. \$150,000 MLS. CALL BRIAN BETTS



A RARE INCOME OPPORTUNITY
Four "neat as a pin" seaview cottages in fabulous Fernwood. Delightful area, walking distance to store, school, government wharf and beach. \$159,000 MLS. CALL FELICITY ANNE GRANT



TWO PARCELS
Same price! Only \$34,900 for 2+ acres across from St. Mary Lake, or for a half acre serviced lot a short walk from the lake. Try your offer. Vendors may provide financing, with low down payment! \$34,900 MLS. CALL GEORGE PUHARICH

READY TO BUILD?
This half acre lot can be had for as little as \$5,000 down and low interest, vendor will take back mortgage and the serviced lot will suit a mobile home. Only \$34,900 MLS. CALL GEORGE PUHARICH



ISLAND WATERFRONT
Enjoy the ever changing views of the waterfront from this unique island home. 3 bedrooms, 2 baths workshop, barn and rental income with appropriate zoning. Perfect for your "cottage industry", with over 135' of lowbank waterfront. \$179,000 MLS. CALL GEORGE PUHARICH



MLS
MULTIPLE LISTING SERVICE

PRE-APPROVED MORTGAGES THROUGH
Metropolitan Trust

LISTINGS ADVERTISED DAILY ON
Rogers Cable TV

GALIANO ISLAND
539-2002 (Res & FAX)

MAYNE ISLAND
539-5527 (Res) 278-1388 (Pager #5073)

PENDER ISLAND
629-6417 (Res) 629-6494 (Res)
629-3366 (FAX)
655-3411 (Toll Free from Victoria)

SATURNA ISLAND
539-2121 (Res) 253-7596 (Pager #2121)

SALT SPRING HEAD OFFICE
537-9981 537-9551 (FAX)



JANET MARSHALL
Galiano Sales Rep.
539-2002



PAUL TANNER
Galiano Sales Rep.
539-2002



VIRGINIA MARR
Mayne Sales Rep.
539-5527



FLYNN MARR
Mayne Sales Rep.
539-5527



JILL PIKE
Mayne Sales Rep.
539-2050



SUE FOOTE
Pender Sales Rep.
629-6417



JOHN FOOTE
Pender Sales Rep.
629-6417



ALEX FRASER
Pender Sales Rep.
629-6494



DON PIPER
Saturna Sales Rep.
539-2121

OUTER GULF ISLAND PROPERTIES

GALIANO ISLAND



REVENUE PLUS!!

3 bedroom main residence and 2 bedroom cottage with a combined \$500+ rent. Woodshed, chicken house, fenced, and wooded on 1.79 level acres. Private with sea glimpse. \$150,000 MLS.

PAUL TANNER or JANET MARSHALL
at 539-2002



ACTIVE PASS VIEW

2 wooded acres bordering on Bluff Park. Views to Mayne Island and Active Pass. \$55,000 MLS.

PAUL TANNER or JANET MARSHALL
at 539-2002



WISE ISLAND HIDEAWAY.

Boater's paradise on .42 acres with 100 ft. of lowbank beach. Water system, private, and views towards Galiano. Ready to build on. \$45,000 MLS.

PAUL TANNER or JANET MARSHALL
at 539-2002

PRIVATE, WOODED ACRE

"Park-like" setting close to ocean access on a water system. Gentle slope with beautiful cedar and arbutus trees. \$45,000 MLS.

PAUL TANNER or JANET MARSHALL
at 539-2002

WHALER BAY LOT

Semi-waterfront 1.64 treed acres on Whaler Bay and Strudies Bay Road. Close to stores and walking distance to the ferry. Court approval on offers. \$55,000 MLS.

PAUL TANNER or JANET MARSHALL
at 539-2002

MAYNE ISLAND



SECLUSION AND VIEW!!

\$165,000

This three bedroom basement entry home with 1680 sq.ft. upstairs and 721 sq.ft. downstairs is located on an acre of land with seclusion and ocean views. Modern kitchen, large bedrooms with ensuite in master bedroom, three decks, large windows to view from living room, dining room and kitchen. Roughed in central vacuum system, new carpeting throughout, large family room, this is an excellent buy for those looking for a larger home with seclusion and ocean view.

VIRGINIA & FLYNN MARR 539-5527
Pager (24 hrs) 253-7596 #5073



FOREST HOMESTEAD

\$160,000 MLS

This is an opportunity to have a true forest homestead in a marvellous island setting. Located in the center of Mayne Island this level ground is covered in second growth forest. Walk through this wonderland of fir and cedar, step over fallen trees covered in green moss, listen to the thousands of birds that abound on the property and imagine this as your home. These large island properties are becoming increasingly rare and this is an opportunity not to be missed. Its kind will not be along again for a long time if ever. Call...

VIRGINIA & FLYNN MARR 539-5527
Pager (24 hrs) 253-7596 #5073



OCEAN VIEW HILLSIDE

\$120,000 MLS

10 acres of incredible ocean views to south west and sweeping around to the north! This is forest land accessible by private road with hydro across the lot. Owner is anxious to sell immediately. This is an opportunity to own incredible view property. Make an offer! All reasonable offers will be considered. Call..

VIRGINIA & FLYNN MARR 539-5527
Pager (24 hrs) 253-7596 #5073

PENDER ISLAND

OCEAN VIEW LOT!!

\$47,500

Sunny, south-western exposure with OCEAN, ISLAND & LAKE VIEWS!!! On community water & sewer, with connection fees prepaid...& there's road access to a good level building site. Call...

JOHN & SUE at 629-6417
or 653-3411 toll free from Victoria



PANORAMIC VIEWS!!!

\$139,000

...of the OCEAN, the ISLANDS, & the MOUNTAINS. This immaculate 2 bdrm, 1-1/2 bath home features a full length sundeck on the south side with glass doors to the spacious living-dining room. Vendors are motivated! Call...

JOHN & SUE at 629-6417
or 653-3411 toll free from Victoria

OCEANFRONT!!

\$299,000

...over 10 acres, with 427' of accessible OCEANFRONT!! Arable land, selectively cleared with several building sites, room for a pond, AND a foreshore licence for excellent moorage in Browning Harbour. Call...

JOHN & SUE at 629-6417,
or 655-3411 toll free from Victoria

ACREAGE!!!

\$39,900

2.19 acres in a high sunny location, surrounded by park on 2 sides. The road is in, and community water is available. See this with John & Sue. Call...

JOHN & SUE at 629-6417,
or 655-3411 toll free from Victoria

VIEW PROPERTIES

Mountain & valley view, with driveway...\$24,500

Ocean view, on quiet cul-de-sac.....27,000

Ocean view, with easy access.....29,900

Ocean view, driveway in, house-site.....35,000

Ocean & valley view, driveway, cul-de-sac..37,500

All these lots are on municipal water. I also have non-view lots for under \$25,000. Call...

ALEX FRASER at 629-6494

COZY COTTAGE

Private log cottage on .98 acre with separate sleeping cabin and garage/workshop. Ocean glimpses, large trees, and abundant wild flowers highlight this property. \$79,900 MLS.

ALEX FRASER at 629-6494

SATURNA ISLAND

RARE WATERFRONT

For the person who wants "The Best". This unique lot has 400' of waterfront. A very private secluded sandy beach with water access only, south west exposure with views to Pender, Mayne, Saltspring. The 3 acre lot allows a full home plus separate guest cottage, several excellent building sites. \$350,000. Call...

DON PIPER 539-2121



BEAUTY ON BOOT COVE

Lovely cottage on sunny, level lot with 250' of low bank waterfront. A variety of ornamental trees and excellent garden site. Just a 10 minutes walk from the ferry. Good beach for small children. Good value at \$155,000. Call...

DON PIPER at 539-2121



EQUESTRIAN'S DELIGHT

This home not only has over 4 acres with barn foundation in place, buy has water view, private moorage access, fenced garden and south-west exposure. Put that together with a 3 bedroom home on 5 years old and you have a real bargain at \$149,000 with vendor financing available. Call...

DON PIPER 539-2121

LYALL HARBOUR LOT

Level building lot only 500 yards to beach. Municipal water, hydro to property. A little clearing and you can start to build. Owner will finance. \$22,500. Call...

DON PIPER 539-2121

EXCEPTIONAL WATERFRONT

Veruna Bay, part of the original 1870 Payne Homestead, has one of the finest low bank sandy beaches in the Gulf Islands. This is the first time that 200 feet of waterfrontage in the unique bay has become available. Only ONE lot of 1.1 acres will be sold.(Don't wait! 10 years from now \$250,000 will seem like an irreplaceable bargain). Call...

DON PIPER at 539-2121

CHANNEL VIEW

Beautiful level lot with excellent view over Tumbo Channel. Sunny location ready to build. Hydro connected. Well & pump installed. Driveway cleared. .88 acre for only \$49,000. Call...

DON PIPER 539-2121

ARTS AND ENTERTAINMENT

Old tradition brightens a 1990 Christmas

We all carry traditions, regardless of our birthplace.

When we were children we looked at traditions as an unnecessary way of doing things with our parents or the community. When we grew up and moved away from home, we tried to fit many new ways into our life, and then realized that something was missing.

BY CECILIA PECH
Guest Columnist

I would like to express my thanks and appreciation to all who welcomed me and allowed me to introduce a Christmas tradition that I grew up with.

I left my country (Hungary) with my two sons in 1983. A new culture, a new language . . . it was rather scary and frightening. I left everything behind me, and to make it easier on myself, I tried very hard to suppress my memories. But as time went by, I realized I had nothing, yet, to pass on to my children.

As December came with thoughts of Christmas, I wanted the season to be different than in previous years. I wanted it to show to my children there are other ways to celebrate December and Christmas. I wanted them to realize that Christmas Eve has a much longer history than Santa Claus (Santa Claus was substituted for St. Nicolas

— originally celebrated on December 6 — and has nothing to do with the concept of Christmas), and explain to them the mystery, beauty and seriousness of the message of Christmas.

Love, peace, God, togetherness, family, hope, concern, sharing . . . and a special child born. I wanted to try and escape the thoughts of our commercialized lifestyle — shopping malls, Santa Claus, T.V. — and I tried to encourage others to do so.

Soon my long awaited dreams formed into ideas for a Christmas play. Talking to friends and sharing my childhood memories, traditions, the way my family celebrated Christmas Eve, made me sceptical at first about introducing a new tradition or persuading others to help.

But as time went by, more and more people were caught up in the spirit, and almost blindfolded, they brought their 100 per cent effort to make our Christmas play

beautiful, successful and memorable, at Our Lady of Grace Church.

What made it even more enlightening was the inclusion of the whole audience in the play. We were together like one big family.

As the church filled up to celebrate Christmas Eve, and when I saw the results of the tremendous effort everybody brought into the evening, I felt happy and very thankful.

In our rapidly changing and scattered society, I feel traditions are very important to act as an anchor for our soul to keep families together, to make our children feel a sense of belonging, and safety, and to help us and our children to carry on in faith and fellowship.

Something that, if temporarily forgotten, can be found again, in our hearts and in our minds. I am very thankful to parents for planting the seeds of faith in me.

VIDEO Advisor

New Year's Slush

Like many of us, video houses take a bit of time to get back up to speed after the Christmas holidays. This week's tapes, then, for the benefit of all, are slight and light.

By JOHN MASTERS
Video Reviewer

Republic Pictures Home Video has issued a collection of six old cliff-hanger serials — the 15- to 20-minute black and white shorts that used to precede the main feature in movie houses back in the 1930s and 40s.

• *Zorro's Fighting Legions*, made in 1939, is still entertaining all these years later. Zorro, a masked 19th-century Mexican answer to Robin Hood, battles evil with the help of his sword, his whip, and his cadre of masked legionnaires.

There is much galloping across the countryside, much dramatically scored clashing of swords, and, of course, the mandatory cliffhanger ending to each episode, where Zorro seems caught in a situation that spells certain doom. One week he's sure to be crushed by a rock slide, the next he's trapped in a building packed with about-to-explode gunpowder.

At the start of the next episode we see how he manages his hairbreadth escape. These are almost always disappointing, but there's a certain moronic pleasure in watching, nonetheless.

Viewers who have had their image of Zorro formed watching the old Walt Disney TV series, starring Guy Williams as a lone hero, avec cape, sans legion, will have to do a bit of mental rejigging to get used to this Zorro, sans cape, avec loyal troupe. They should have less trouble with tall, B-movies actor Reed Hadley, who does a proper job as Zorro and his foppish alter

ego, Don Diego de la Vega.

A second serial, *Zorro's Black Whip* (1944) stars Linda Stirling as Don Diego's sister, who takes his place as a masked crusader (called the Black Whip), following her brother's death, but this time in Idaho.

• Other just-released cliffhanger serials from Republic include: *Robinson Crusoe of Clipper Island* (1936), which is sort of what you imagine, but includes FBI agents and Rex the Wonder Horse; *Undersea Kingdom* (1939), starring Ray "Crash" Corrigan, and set in an Atlantis filled with futuristic (for the 1930s) gizmos; and *SOS Coast Guard* (1937), starring Bela Lugosi as a mad scientist the U.S. Coast Guard must contend with.

Robinson Crusoe has 14 episodes; all the rest have 12. Each serial comes on two cassettes and costs \$39.98.

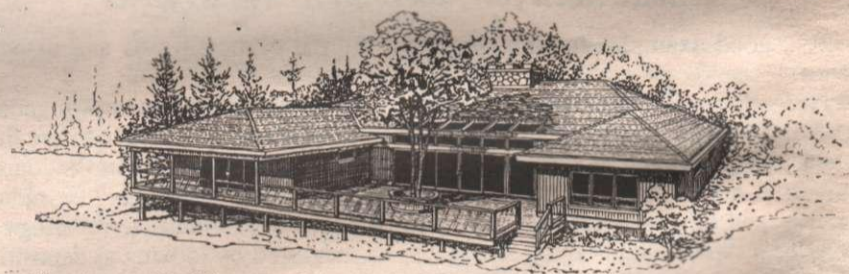
Trite Wine

May Wine (Media) stars *Twin Peaks'* Lara Flynn Boyle and the often-very-good Joanna Cassidy in a fluffy, 40s-style American-in-Paris sex comedy. Cassidy and Boyle play Californian mother and daughter, off to Paris for a vacation that quickly comes to revolve around Dr. Charmant (Guy Marchand) the French physician both have fallen in lust with.

For awhile, neither knows what the other is up to — then the sheets hit the fan. No one is particularly bad here, it's just that the whole idea seems a tad dated.

Just out:

• *My Blue Heaven* (Warner). A good cast (Steve Martin, Rick Moranis, Joan Cusack) in a comedy that got tepid reviews from the critics when it opened and seems to have sunk lower in their esteem in the intervening months, to judge by the recent recaps of 1990 movies.



Planning and building your Dream Home can be a happy experience but there can be disappointment if it doesn't turn out quite as visualized. This is often caused by sketchy plans, because even the best Builder can't read your mind. We combine our ideas and experience with your wishes and produce very specific plans at reasonable cost. That's Dream Insurance!

We'll be happy to discuss your plans without obligation.

Call BILL MONAHAN THE OMEGA DESIGN TEAM
SALTSPRING ISLAND

P.O. BOX 63 GANGES B.C. V0S 1E0 PHONE 537 4290



PASTORAL SETTING
Adjoining large farms, 3 bedroom character home on 1.59 acres, piped water, quiet road. \$139,000. Call Jessie.

PRIVATE ISLANDS
Group of two 240 acre & 3 acre, not to be sold separately. Lovely bay, protected moorage. Many features. Located in southern Georgia Strait. \$1.M - terms negotiable. Call Jessie for complete info.

NEW LISTING
View acreage - treed 5 acres with driveway in. Year round creek and pond site. Lots of privacy. \$79,000. Call Jessie.

PRIVATE ISLAND
Islands are Hot! and this one is a best Value Buy! 200 acres located just off shore from Port Hardy. Giant mussels, protected deep water bay, well treed, a superb investment in future fishing grounds, diving camp, etc. Just \$1750 per acre. \$350,000. Call Ed.



EXECUTIVE OCEANFRONT, WELBURY BAY
Exquisitely finished 4,080 sq.ft. home on easy care .69 acre oceanfront property fronting on Welbury Bay. Steps to beach with foreshore lease in place. Oceanfront living at it's finest! \$750,000. Call Ed.



LOW BANK OCEANFRONT OPPORTUNITY
Outstanding 1.76 acre south facing oceanfront residence with walk-on beach. Newly renovated 2 bdrm rancher. Garden, uniquely treed, private. \$539,000. Call Ed.



ST. MARY LAKE
Outstanding 2.29 acre south facing gently slope lakefront property in quiet area. Comfortable 3 bdrm, 1400 sq.ft. home. Garden, fruit trees. Very rare!! \$349,500. Contact Ed.



OUTER ISLAND PROPERTIES

For free maps, NRS catalogues and general real estate information, please contact:

- NRS MAYNE ISLAND REALTY LTD. (539-2031)**
(including Saturna)
Carol Kennedy — 539-2606
Diana Lodge — 539-5227
Glen McLeod — 539-2719
- NRS GALIANO ISLAND REALTY LTD. (539-2250)**
Rosemary Callaway — 539-2515
Jill Hansche-Penny — 539-5896
John Ince — 539-2559
Mollie Colson — 539-5950
Judi Pattison — 539-2077
- NRS PENDER ISLAND REALTY LTD. (629-3383)**
Marg & Don Keating — 629-3329
Linda Sokol — 629-6569

RE/MAX® Realty of Salt Spring Island

a division of Small World Real Estate Company Inc.
136 Lower Ganges Rd., P.O. Box 1022, Ganges, B.C. V0S 1E0
Office (604) 537-9977 Fax (604) 537-9980

ISLAND LIVING

LIVING WELL

by Dr. Peter Bennett, N.D.



It is well documented that certain individuals need key nutrients in higher than the RDA (recommended daily allowance) recommendations to be healthy or at least be stabilized in their chronic disease susceptibility.

This is a crucial point to demonstrate that one diet or lifestyle may not fit all individuals. To say that eating margarine and staying away from eggs will prevent everyone's heart disease is naive and misleading. With the recent advances in human biology it has been possible to identify a genetic marker for diseases that were previously poorly understood as to their origin and cause.

Now that there is a technology for the identification of chromosomes, medical technology is looking at the ability to deliver diagnostic services before the onset of a disease which has a certain genetic "tendency." This may be one of the most significant advances in medicine in this century.

The upshot of this idea is that the best treatment of disease is prevention. Since we know that certain diseases have a genetic tendency to develop because of an increased need for certain nutrients according to a *biochemical individuality*, these diseases can be identified and the patients who are at risk for these diseases can be provided with a diet and extra supplementation to allow full protection from the genetic probability of the disease.

Genetic need for nutritional supplements

Two good examples for this argument are the cystic fibrosis and diabetes genes.

Presently cystic fibrosis is an example of a disease which has known genetic locality, a known diagnostic procedure but conventional medicine has very little which can be offered as a therapeutic protocol. A recent article in the journal *Digestion* noted that cystic fibrosis patients are more prone to free radical damage and oxidation in their systems. This is a biochemical terminology to describe a rapid cellular aging which can be measured by looking at deposition of something called lipofuscin inside of the patient's cells.

When the serum levels of selenium, vitamin D, betacarotene and vitamin C were measured in cystic fibrosis patients, their averages were much lower than normal. Therefore it was suggested that by supplementing these patients with these nutrients, their disease process would be altered. In fact when this suggested protocol is used, the cystic fibrosis patients report a dramatic improvement.

Protected by starchy staples

This disease is therefore a genetic need for higher levels of certain inexpensive nutritional supplements.

Diabetes is another example of a disease which has a genetic tendency. Both adult and childhood onset diabetes have a familial marker. The treatment of adult onset diabetes has been shown to be completely due to dietary factors in the indigenous populations of the southwest Indians.

What is most interesting is that the same traditional diets which stabilize blood sugar in the Indian populations work when fed to white caucasians. The picture that emerges is that those individuals who have the genetic tendency for adult onset diabetes are protected by the starchy staples of the southwest Indians and other aboriginal cultures.

Chromium deficiency and obesity also appear to be involved as a risk factor.

Effective way to prevent diseases

When a naturopathic physician evaluates a patient for chronic degenerative diseases such as arthritis, cancer, diabetes, gout, heart disease, hypertension and allergies, the familial tendency to these diseases gives a red flag to the need to treat those problems which may really only be an increased need for certain nutrients which the body needs in "excess amounts" to the normal RDA.

There is a host of diseases which have been identified which are called "enzyme defect" disorders. These are genetic problems that manifest as missing enzyme systems or "biochemical machinery." These problems can manifest as an ability to metabolize the amino acid phenylalanine (this is what the PKU test is looking for) or a problem of tryptophan metabolism which leads to a deficiency in niacin.

Identification of subclinical nutritional idiosyncrasies which are the root of familial disease processes (cancer and heart disease are prime examples) and treating these patients with the appropriate specific dietary therapy is a major area where naturopathic medicine will be contributing to conventional healthcare models through the cost effectiveness of preventing disease before it manifests.



FULL STEAM AHEAD: B.C. Ferry Corporation workers Dick Chudley (left) and Henry Schwagly navigate and steer the *Bowen Queen* from the wheelhouse. These men and numerous other people worked throughout the Christmas holidays.

Driftwood photo by Derrick Lundy

STEWART SCOTVOLD HOLDINGS LTD.



RESIDENTIAL CONSTRUCTION

With a Project Management approach

RODNEY H. SCOTVOLD, P.ENG., M.B.A.
P.O. Box 932, GANGES, B.C. V0S 1E0
(604) 537-2344 FAX (604) 537-4243

Jonathan Yardley-architect

With over 16 years experience on the Gulf Islands I will work with you to steer your project from idea to reality. Projects may vary from simple additions and renovations to new houses and commercial development. Full personal service is provided with free initial consultation.

Jonathan P.M. Yardley
Dip. Arch. (Birm.) MAIBC, MRAIC, RIBA

p.o. box 960, ganges, b.c.
tel 537-2831 fax 537-9931

office located at 105 rainbow road



member of the architectural institute of british columbia

PRIME OCEANFRONT ACREAGE & COTTAGE



5.43 acres, private and fenced to keep deer out. Self-sufficient garden, 2 orchards. Home is small but comfortable. 4 outbuildings. Views of islands and Mount Baker. \$329,000 (offers).

4 ACRE SEMI-OCEANFRONT HOME



Panoramic views of Trincomali Channel. Solid oak floors. Natural rock fireplace. Rose garden. Apple orchard. 2 bdrms on main. 3 piece bath. Rec room. \$241,000.

OWNERS HAVE BOUGHT



3 bedroom semi-waterfront home on landscaped .71 acre. Fireplace and airtight. All appliances. Thermal windows. Mooring block. \$209,000.

\$84,500 SUPERIOR BLDG. LOT
Exclusive development area with impressive future, & has become preferred area of Salt Spring. Vendor will build to suit. (Minimum floor area 1400 sq.ft.) Large 1.40 acre lot with parklike setting.



DICK TRORY
AGENT

bus.(604)537-5515 Van.Dir.278-5595
V.I. Dir. 656-5554



NRS SALT SPRING REALTY LTD.
AN INDEPENDENT MEMBER BROKER
149 Fulford Ganges Road, P.O. Box 69

NORTHWEST TRANSPORT LTD.

LONG DISTANCE & OVERSEAS
MOVING & STORAGE

Salt Spring & Gulf Islands District

OUT OF TOWN CALL COLLECT:
GRAHAM (Scotty) DICKSON
Moving Consultant

Atlas Van Lines Agent



Victoria: (604) 479-6444

ISLAND LIVING

The year in review: Saturna looks at 1990

By LYNNE PIPER
Driftwood Correspondent

Here's a recap of Saturna's "year that was:" 1990 in brief.

JANUARY

- Days and days of heavy rains.

FEBRUARY

- Rains give way to cold, windy weather and some snowfall.
- Condolences to the Barry Crooks family are expressed with the news that "Bucky" Crooks and his son, Shawn, drowned when their boat went down during a bad storm.
- Sven Johansson, Arctic explorer, presents two nights of slides and a talk on his sea voyage through the Northwest Passage.

MARCH

- Frustration with B.C. Ferry's *Nicola* continues.
- The Eddie Reid Memorial Library opens.
- In conjunction with the 911 emergency number, Saturna's Volunteer Fire Department designates addresses for all properties on Saturna. Address numbers start appearing on properties around the island.

APRIL

- Goodies go fast at the Women's Club Annual Bake Sale.
- RaeAnn House arrives to brighten the lives of parents, Flo and Bill House and sister Corine.

MAY

- Saturna's Theatre on the Rock presents *Was She Sown or Was She Reaped*.
- Saturna Lions' Mother's Day Pancake

SATURNA ISLANDS *Scene*

Breakfast gives island moms and grandmoms the morning off.

- The annual Spring Pig Barbecue sponsored by the Volunteer Fire Department is a huge success.
- An Industrial First Aid Course is offered and a number of islanders take advantage of this worthwhile course.
- Andrew McLean, son of Jean and Dave McClean, suffers severe injuries in a single car accident.
- Condolences are offered to the Barry Crooks family upon hearing of the death of Barry's mother, Muriel.

JUNE

- The shortlived sunny weather experienced in May gives way to rain, rain, rain.
- Saturna school children are honoured

at Celebration Day and school is recessed for summer!

JULY

- The annual Saturna Community Lamb Barbecue is held in Winter Cove Park.
- Beth and Casey Carpenter become the proud parents of son Joseph Casey Carpenter.

AUGUST

- Hot weather continues and fires become a major concern.
- Jim Money and Cindy Hogg wed.
- The Lions hold a successful auction, August 6.
- Recycling on Saturna is a reality at the new Recycling Depot across from the General Store.

SEPTEMBER

- School reopens. A water taxi is based on Saturna and Alf Reynolds and Cal Hollings become its skippers.
- Smoking at public functions in the Community Hall is banned.
- Renovations to Dick and Gloria Silverberg's pub and store are complete; the coffee shop is a welcome haven for early morning ferry commuters.
- Unveiling of cairn marking the site of Saturna's first school occurs.
- Kate Maguire sustains injuries in a motorcycle/moped accident.

OCTOBER

- The fall rains start.

NOVEMBER

- Rain, rain, rain.
- Jacques Campbell is successful in her bid for CRD director; the community celebrates with a potluck dinner in her honour.
- John Money and Harvey Janszen are Saturna's Islands Trust representatives for a further term and Lorraine Campbell will serve as school board representative.
- Another delicious Fall Fire Department Pig Barbecue occurs.
- Relief from *Nicola* frustration: *Tenaka* returns to Saturna Island run.

DECEMBER

- More rain and then very, very cold weather (and snow! snow! snow!)
 - Ann Bavis moves to Sidney.
 - Christmas celebrations begin: the Christmas ship, the school concert, the Candlelight Dinner.
 - No Christmas Eve carolling — a first in a long time.
 - A white Christmas.
- Health and Happiness to all during 1991.

Donor clinics scheduled

Blood donor clinics offer individuals an opportunity to help others. Canadian Red Cross donor clinics open in four locations in Greater Victoria for January.

Beginning Monday, January 14 for two days, the clinic will be held at Red Cross House at 909 Fairfield Road. Hours for the clinic on the first day run from 2:30 p.m. to 8 p.m. while the next day, the hours will be from 2 p.m. to 8 p.m.

On Wednesday, January 16, the clinic moves to Sidney Elementary School at 2281 Henry Avenue with hours of 2 p.m. to 8 p.m.

On Thursday, January 17, blood donors can go to the Sooke Legion at 6726 Eustace Avenue between 2 p.m. and 8 p.m. The final clinic for the week is slated for H.M.C.S. Naden on Admiral's Road in the Old Petty Officer's Mess, Club 53. That clinic runs from 10 a.m. to 3 p.m.

GULF ISLANDS REALTY LTD.

P.O. Box 750, Ganges, B.C. V0S 1E0 PHONE (604) 537-5577 FAX (604) 537-5576

MONTIETH DRIVE OCEANFRONT



Near half acre lot with steps to beach, roughed in driveway, health permit issued last year and on water system, close to store and ferry yet in private area of fine homes. \$119,500 MLS.

TIDAL WATERFRONT PLUS HOME



Over 1200 sq.ft. home, unfinished, on 3.01 acre lot on Booth Canal, treed lot with good dug well, has great possibilities for a handyperson. \$99,500 MLS.

SUNSET DR VIEW ACREAGE



Very private separately titled 2 x 5 acre+ properties in prestigious area with ocean views, boundaried by large acreages on two sides, community water, hydro, telephone and cable to lot line. For more info, call Santy. \$179,000 MLS.

SATURNA ISLAND TWO SIDE BY SIDE LOTS

Just a short walk from the ferry, store, pub and government dock are these two nicely level treed lots, each just under 1/2 acre, both having a valley view and one having glimpsing view of Boot Cove from a rocky knoll. On piped water. \$17,000 each MLS.

CALL DAVID DUKE 653-4538
MLS GOLD AWARD WINNER

PRIVATE AND PEACEFUL

Quiet 4.95 acres, driveway to cleared building site, water, hydro & telephone. \$44,000.

RARE VIEW LOT

Spectacular views of St. Mary Lake. 0.4 acres, cleared, serviced. \$59,500.

PETER LAMB 537-4859

SPACIOUS FAMILY HOME



Enjoy all day sun in this 5/6 bedroom family home situated on a half acre with view, near Vesuvius. Large sundeck, oak kitchen, wood floor in dining area, skylights, three bathrooms and daylight basement with rec room are just some of the features of this 2688 sq.ft. home. \$159,000 MLS.

LYNN SCOTTON 537-5186

A VERY SPECIAL SALT SPRING ESTATE



This stately 3200+ sq. ft. 3 bedroom home is equipped with every feature a discriminating owner would expect to find in a structure built with such attention to detail, sound planning and quality materials. In addition, there is a large professional style greenhouse plus a fully insulated and serviced 3 car garage which would easily convert to a spacious studio. This very private sunny home on 6 3/4 acres is reached by a winding paved drive through tall evergreens. Virtually every room in the home enjoys a valley and distant sea view. This is a very special home. \$395,000 MLS.

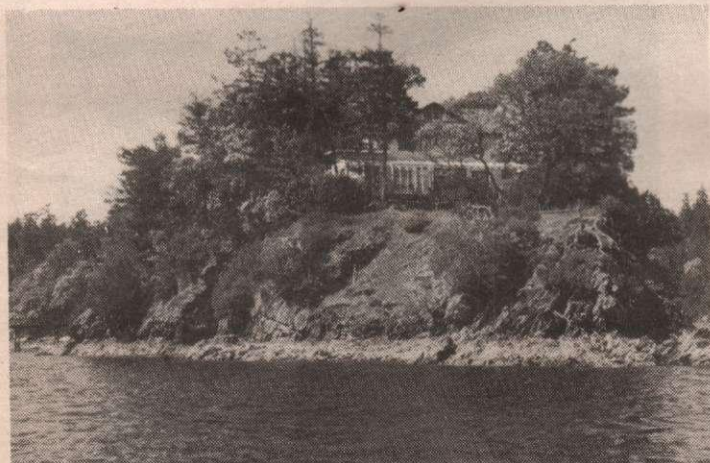
RARE WATERFRONT ACREAGE



Almost seven acres of south facing waterfront studded with Arbutus and evergreens between the open moss covered rocky knolls dropping down to almost 500' of waterfront in a series of easy benches and incomparable views over Satellite Channel to the Olympic Mountains. \$425,000 MLS.

CALL DAVID DUKE 653-4538
MLS GOLD AWARD WINNER

UNIQUE WATERFRONT PROPERTY



Gracious Salt Spring Island home, located on a peninsula of land approximately 3 acres with 1500 ft. of waterfront. Caretaker/guest cottage, boat dock, with foreshore lease, sunny, private, yet close to village, a rare opportunity. \$779,000 MLS.

SANTY G. FUOCO 537-2773
MLS GOLD AWARD WINNER

ELEGANT NEW HOME PANORAMIC OCEANVIEW



A beautifully appointed and superbly finished (1990) west coast style home of approx. 1800 sq.ft on the main floor with almost 1000 sq.ft. on the lower level for future development. An expansive deck runs the full length of the house with a breathtaking view from the north shore mountains to Mount Baker in Washington with Active Pass and the Outer Islands in between. This deluxe home (in comparable value at \$289,000 MLS.

DONNA REGEN, CGA 537-2845



PEMBERTON HOLMES (GULF ISLANDS) LTD.

537-5568
P.O. Box 929, Ganges, B.C.
156 Fulford-Ganges Road
Victoria Direct Line 652-9225 Fax 652-9225

1887 - 1990
103 years
as your
good
neighbour!
1887 - 1990



ROSCOMMON PATIO
TOWN HOMES
COSY COMFORT
FUNCTIONAL DESIGNS
MAINTENANCE FREE
ALL AMENITIES!!

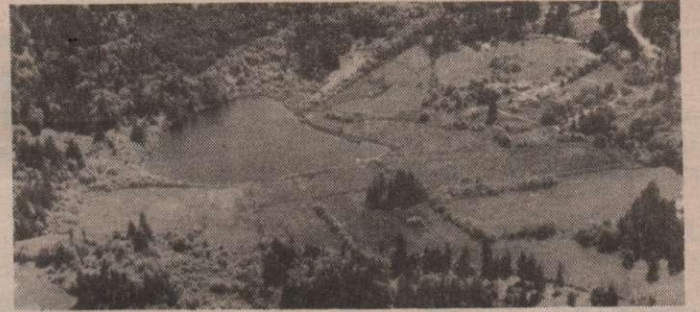
WATCH FOR SPECIAL ANNOUNCEMENT

• Call Pat Lloyd-Walters
Ann Foerster or Wynne Davies



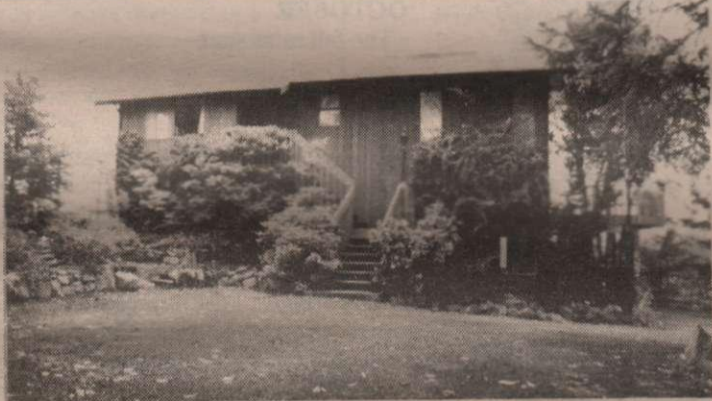
"CAMELOT" .50 ACRE
\$65,000 MLS

- water system, hydro, septic in
- small vacation home
- walk to public dock
- some ocean view
- Call Amy Goodwill



MERESIDE FARMS LTD.
158 ACRES! SPECTACULAR FARMLAND
\$1,400,000 GREAT POTENTIAL

- 2000 ft. frontage on trout stocked lake
- cleared meadows, s. slopes
- vendor financing available
- delightful building sites
- irrigation rights
- Call Ann Foerster



TERRIFIC FAMILY HOME
VIEWS OF MT. BAKER & ACTIVE PASS
\$199,500 MLS

- 3 bedrooms plus den
- hobby room & workshop
- private, spacious lot
- Call Arvid Chalmers



SPECTACULAR VIEWS!!
30 ACRES ON MT. BELCHER
\$275,000 MLS

- cottage at entryway
- roads leading to prime view
- site - Howe Sound! Vancouver!!
- 2 spring fed ponds - arable areas
- one of a kind property
- Call Carol Fowles or Arvid Chalmers



MARVELOUS VIEWS
SUPERBLY BUILT HOME 3.05 ACRE
\$380,000 MLS 3,156 SQ.FT.

- views of St. Mary Lake and Sansum Narrows
- hardwood floors
- radiant heating
- swimming pool & sauna - 3 baths
- Call Arvid Chalmers



100 HILLS AREA
SUPERBLY MAINTAINED VIEW HOME
\$199,500 MLS

- 3 bdms plus den
- large family room
- level easy access
- wrap around decks let
- you enjoy the peace and tranquility
- see this home today
- Call Carol Fowles



PRIVATE TRANQUILITY
CONVENIENTLY LOCATED
\$84,000 NEW PRICE!! MLS

- 6 sunny acres off cul-de-sac
- farmland, lake & ocean views
- build your dream home here
- roughed in driveway to site
- shared well yields 3 gpm
- Call Ann Foerster



SEAVIEW BUNGALOW - LOTS OF SUN
WALKING DISTANCE TO VESUVIUS BEACH
\$139,000 MLS

- 3 bdrm cozy home
- excellent retirement or great weekend get-away
- vendor will complete
- private treed back yard
- located in popular area
- close to ferry, store & pub
- Call Maggie Smith



TRINCOMALI CHANNEL VIEWS
NORTH END FARM ACREAGE 5.1 ACRES
\$179,000 MLS

- well built 2 level home
- guest cottage
- bright & sunny
- 15000 sq. ft. deer fenced
- garden mature fruit trees
- spring fed pond
- Call Arvid Chalmers

BUILDING LOT
ST. MARY HIGHLANDS
\$35,000 MLS

- sloping treed lot
- piped water & hydro at lot line
- nice area of homes
- near all amenities
- Call Maggie Smith

QUIET & SECLUDED-20 AC.
JUST MINUTES TO TOWN!!
\$105,000 MLS

- great potential-subdividable
- driveway into cleared building
- site-perc test done
- well suited for hobby farm
- Call Carol Fowles Today

PEACE AND QUIET
SUNNY SOUTH END ACRES
\$68,500 TO \$82,500 MLS

- from 2.55 acres to 6.60 acres
- architect designed subdivision
- all properties offer several choice building sites
- Call Arvid Chalmers

VESUVIUS VALUE
2 WATERFRONT LOTS
\$125,000 & \$115,000 MLS

- .19 acres or .17 acres
- side by side
- superb ocean views
- breathtaking sunsets
- near beach, ferry, pub, shops
- Call Arvid or Kerry Chalmers

ST. MARY LAKEFRONT
SINGLE LEVEL HOME - 1 ACRE
\$219,000 MLS GREAT VALUE!

- 2 bdrm plus den
- swimming pool - loads of deck
- space to enjoy outdoors
- double carport with workshop attached
- Call Arvid Chalmers

CHANNEL RIDGE
OCEAN VIEW LOT
\$72,900 MLS

- 1.14 acres-looking out over Stuart Channel & Vancouver Is.
- driveway roughed in
- perc test done-piped water
- phone & cable at lot line
- Call Carol Fowles

MOUNTAIN VIEW & SUNSET
PRESTIGIOUS NEIGHBOURHOOD
\$55,000 MLS

- 1/2 acre overlooks Sunset Dr. farm
- access off Mt. View cul-de-sac
- piped water & hydro at lot line
- level sunny building site
- great value
- Call Wynne Davies

HUNDRED HILLS
HALF ACRE BUILDING LOT
\$55,000 MLS

- easy to build on - quiet area
- piped water, hydro, telephone & cable
- just minutes to shopping and schools
- Call Pat Lloyd-Walters



ST. MARY LAKE BEAUTY
SOUTH FACING LAKESIDE HOME
\$329,000 MLS

- 2.46 sunny acres
- 2 bdrm + self-contained suite
- 3300 sq. ft. home
- oak trim & polished brass
- 3000 gal. day water license
- Call Arvid Chalmers or Wynne Davies