



Driftwood

Island Living Real Estate



Mayne Islanders honour vision of "Mr. Parks"

It was largely the vision and determination of "Mr. Parks" — Ed Williams — which led to the acquisition and development of Dinner Bay Park, an 11-acre waterfront parcel on Mayne Island.

By CHRIS STEWART
Driftwood Correspondent

Williams' vision has been noted recently with a sign mounted at the park in his honour.

The area now comprising Diners Bay Park was originally owned by a sea captain and subsequently by Japanese chicken farmers. It was later acquired by a group who advised this 11-acre site should be left for public use.

Williams got the wheels in the motion by organizing a Parks and Recreation Commission which obtained title for the park within six months.

Williams vividly recalls his first impressions when he viewed the land: "It was covered with tall, matted grass stretching out to the water's edge. I could see its potential immediately."

Williams sees further developments in the park's future, pointing to the 18 Japanese cherry trees donated by "Joe" Otsuki where he would like to see a Japanese garden created in memory of Mayne's early settlers.

"We'll build play equipment for the children in this fenced section, and we'll also include a tennis court — as long as it won't interfere with the park's general use. But we'll have a baseball diamond for sure."

William has dreamed of building a proper baseball field on the island since watching the ladies' baseball club chase balls over the uneven, matted school grounds.

Many islanders believe Williams' characteristics of trustworthiness and dependability have become the hallmark of the scores of volunteers who helped make Dinner Bay Park what it is today. These are the people who turned out — rain or shine — at monthly work parties to dig, plant, lay cement, build, install wiring, bulldoze and even erect the flagpole. They knew if Williams said he'd be there at 10 a.m. they could count on it: he's as good as his word.

"If you are straightforward with people and they know what you are talking about, they are certain to be there to help," he says. "People who donate their time and work want to be assured that



Sign recently erected at Diner Bay Park honours Ed Williams

Driftwood photos by Chris Stewart

they are being successful."

Williams minimizes personal acclaim but is replete in his praise for others.

Reports of vandalism or graffiti are unthinkable at Dinner Bay Park, he explains, "simply because Mayne Islanders have developed this park and are determined it won't be smeared or desecrated in any way. It's their park and they're mighty proud of it."

Bylaws governing the park were adopted from the Juan de Fuca Parks and Recreation Commission. Overnight camping is prohibited, as are open fires, horses and golfing; dogs are restricted to leashes.

Dinner Bay Park is not the only Mayne Island park spearheaded by Williams. When he and John Halliday served on the Society of Water Districts they realized something had to be done to conserve the millions of gallons of water pouring down from Mt. Parke to Horton Bay.

"I've been up on Mt. Parke in winter," Williams said, "when there's been six in-

ches of water sitting up there."

As the Water Society is unable to hold land, it could not acquire the 77 acres in question. However, with provincial and district monetary aid, they were able to designate the land as a regional park — one of several now established on both Vancouver Island and the Outer Gulf Islands.

Williams recalls taking slides of the property to present to a CRD meeting, in an attempt to strengthen their case.

"We were labouring our point somewhat, when a dear little lady from Oak Bay got up meekly and asked, *If these people from Mayne Island want this property then why are we sitting here discussing it?*"

That was all that was needed to win CRD approval. The 77-acre regional park will eventually be equipped with hiking trails and facilities for day picnicking. It will be enjoyed by many.

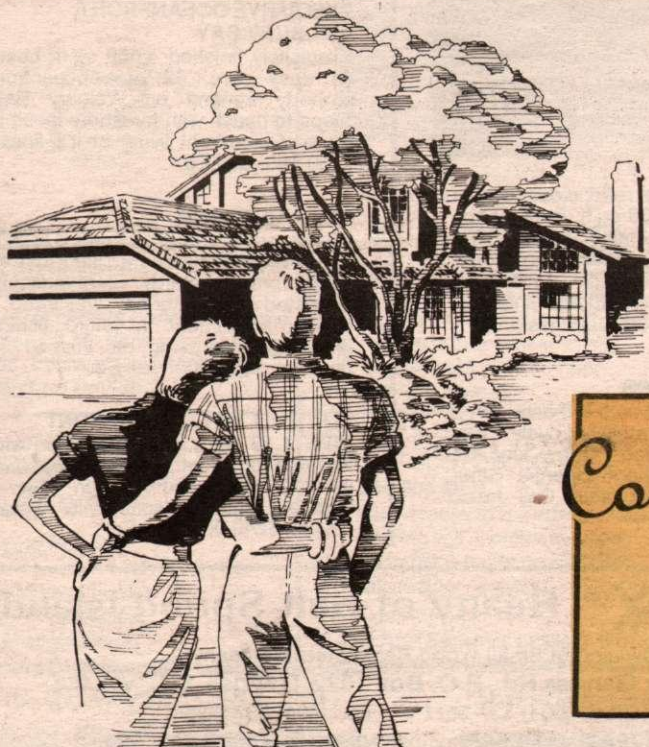
Williams' interest in parks began long before 1972 when he arrived on Mayne. As part of Vancouver's 700-man police

force for 13 years, residing near Kensington Park, he served for four years as president of the park's community centre.

Williams' knack of working well with people, plus his "trustworthiness and dependability" were his hallmark then, just as they are today. He recalls opening the old field house in Kensington Park to a rock-and-roll band for practices and afternoon dances. (Mayne Island's Paddy Lambert's son-in-law was one of the principle players.) He soon had the business people along Commercial Drive backing him. When the band became the first rock-and-roll band featured in the annual PNE parade, he persuaded local lumberyards to donate the materials needed for the mobile stage.

After leaving the police force, Williams was anxious to go into business for himself. Raised at Harrison Mills and the Haney area, he had worked at a variety of trades prior to his police experience. After investigating business opportunities in the North Thompson area, he decided

TURN TO PAGE C2



Your weekly guide to
GULF ISLANDS PROPERTIES

Compliments of:





Driftwood

Island Living Real Estate



Mayne Islanders honour vision of "Mr. Parks"

It was largely the vision and determination of "Mr. Parks" — Ed Williams — which led to the acquisition and development of Dinner Bay Park, an 11-acre waterfront parcel on Mayne Island.

By CHRIS STEWART
Driftwood Correspondent

Williams' vision has been noted recently with a sign mounted at the park in his honour.

The area now comprising Diners Bay Park was originally owned by a sea captain and subsequently by Japanese chicken farmers. It was later acquired by a group who advised this 11-acre site should be left for public use.

Williams got the wheels in the motion by organizing a Parks and Recreation Commission which obtained title for the park within six months.

Williams vividly recalls his first impressions when he viewed the land: "It was covered with tall, matted grass stretching out to the water's edge. I could see its potential immediately."

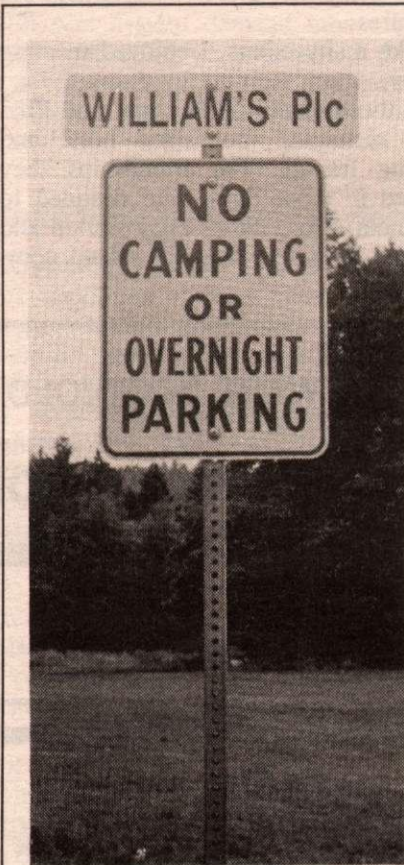
Williams sees further developments in the park's future, pointing to the 18 Japanese cherry trees donated by "Joe" Otsuki where he would like to see a Japanese garden created in memory of Mayne's early settlers.

"We'll build play equipment for the children in this fenced section, and we'll also include a tennis court — as long as it won't interfere with the park's general use. But we'll have a baseball diamond for cure."

William has dreamed of building a proper baseball field on the island since watching the ladies' baseball club chase balls over the uneven, matted school grounds.

Many islanders believe Williams' characteristics of trustworthiness and dependability have become the hallmark of the scores of volunteers who helped make Dinner Bay Park what it is today. These are the people who turned out — rain or shine — at monthly work parties to dig, plant, lay cement, build, install wiring, bulldoze and even erect the flagpole. They knew if Williams said he'd be there at 10 a.m. they could count on it: he's as good as his word.

"If you are straightforward with people and they know what you are talking about, they are certain to be there to help," he says. "People who donate their time and work want to be assured that



Sign recently erected at Diner Bay Park honours Ed Williams

Driftwood photos by Chris Stewart

they are being successful."

Williams minimizes personal acclaim but is replete in his praise for others.

Reports of vandalism or graffiti are unthinkable at Dinner Bay Park, he explains, "simply because Mayne Islanders have developed this park and are determined it won't be smeared or desecrated in any way. It's their park and they're mighty proud of it."

Bylaws governing the park were adopted from the Juan de Fuca Parks and Recreation Commission. Overnight camping is prohibited, as are open fires, horses and golfing; dogs are restricted to leashes.

Dinner Bay Park is not the only Mayne Island park spearheaded by Williams. When he and John Halliday served on the Society of Water Districts they realized something had to be done to conserve the millions of gallons of water pouring down from Mt. Parke to Horton Bay.

"I've been up on Mt. Parke in winter," Williams said, "when there's been six in-

ches of water sitting up there."

As the Water Society is unable to hold land, it could not acquire the 77 acres in question. However, with provincial and district monetary aid, they were able to designate the land as a regional park — one of several now established on both Vancouver Island and the Outer Gulf Islands.

Williams recalls taking slides of the property to present to a CRD meeting, in an attempt to strengthen their case.

"We were labouring our point somewhat, when a dear little lady from Oak Bay got up meekly and asked, *If these people from Mayne Island want this property then why are we sitting here discussing it?*"

That was all that was needed to win CRD approval. The 77-acre regional park will eventually be equipped with hiking trails and facilities for day picnicking. It will be enjoyed by many.

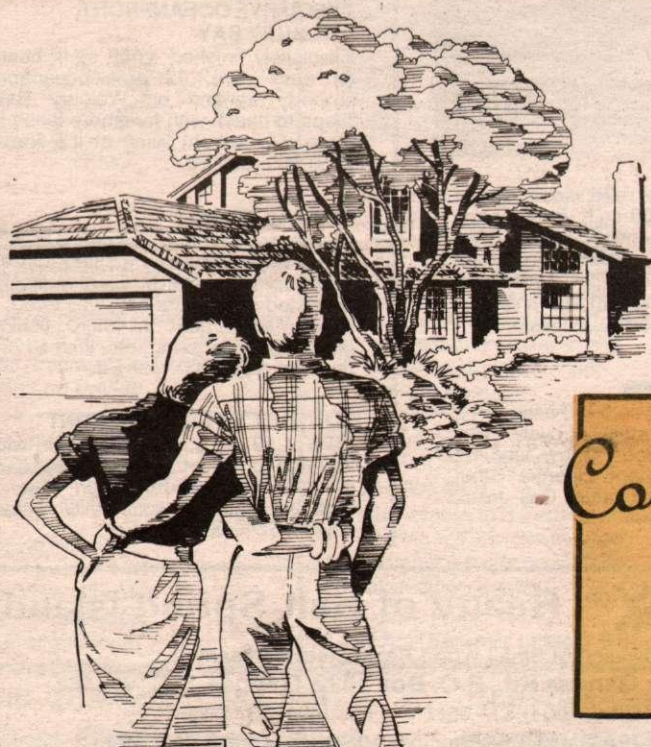
Williams' interest in parks began long before 1972 when he arrived on Mayne. As part of Vancouver's 700-man police

force for 13 years, residing near Kensington Park, he served for four years as president of the park's community centre.

Williams' knack of working well with people, plus his "trustworthiness and dependability" were his hallmark then, just as they are today. He recalls opening the old field house in Kensington Park to a rock-and-roll band for practices and afternoon dances. (Mayne Island's Paddy Lambert's son-in-law was one of the principle players.) He soon had the business people along Commercial Drive backing him. When the band became the first rock-and-roll band featured in the annual PNE parade, he persuaded local lumberyards to donate the materials needed for the mobile stage.

After leaving the police force, Williams was anxious to go into business for himself. Raised at Harrison Mills and the Haney area, he had worked at a variety of trades prior to his police experience. After investigating business opportunities in the North Thompson area, he decided

TURN TO PAGE C2



Your weekly guide to
GULF ISLANDS PROPERTIES

Compliments of:



ISLANDS

Tuppy Agar's smile was a part of the man

By FRANK RICHARDS
Driftwood Staff Contributor

You couldn't miss Tuppy Agar. He was the man with the smile at Harbour House.
That's where I met him.
I'm thinking back some 25 years, when the Harbour House was a rambling

old country residence promoted to hostelry. Before it all burned down.
You might have met Tuppy in the pub or you might have found him presiding over the dining room. Sometimes he was greeting newcomers at the hotel desk.
It wasn't just that he was smiling. The cynic could readily shrug it off and assume that was his job. No more. But with

Tuppy the smile was part of the man. Despite the pressures and the anxieties, he liked meeting people. Because he liked people.
On occasion the smile might be replaced by a frown when he was remonstrating with a particularly happy customer or listening to a particularly unhappy customer. Those were among the pressures.

Came they day when they retired from hotel management and moved into Victoria to run their own business. Their first customers in their new pursuit were the friends they had made on the island. And Tuppy was wreathed in smiles.
When the couple finally quit and settled down on Salt Spring Island, they took up where they had left off. Life was a happy smile.
Stricken with a terminal illness, Tuppy Agar was still able to meet life and people with the same happy grin. He smiled his way through the pain and the torment.
And wherever he is today I don't mind betting he's wearing a seraphic smile on his face.

High regard for Williams shown by new park sign

From Page C1

to purchase a two-taxi and bus business on Salt Spring Island.
He later managed the Harbour House and Sidney hotels before, plagued by heart trouble, he was advised to choose less stressful work. In 1972, he was employed by B.C. Ferries to work as a ticket agent at Village Bay on Mayne Island.
Mayne Islanders' high regard for their

parks' chairman surfaced the month he was off work with Bell's palsy which forced him to stay indoors.
When Phil Christenson kept asking if he had been to the park recently, Williams explained he was confined to the indoors. Finally, Williams decided to dress warmly and go down to the park.
There, to his astonishment, was a new directional sign, leading into Dinner Bay Park. It said "Williams' Place."

Like many others, I enjoyed meeting Tuppy.
In those days A.V.H. Agar and Phyl were managing the island hotel and making friends. The friendships they formed in those days were destined to last them a long time. They smiled and laughed their way into the island community.

STEWART SCOTVOLD HOLDINGS LTD.
RESIDENTIAL CONSTRUCTION
With a Project Management approach



RODNEY H. SCOTVOLD, P.ENG., M.B.A.
P.O. BOX 932, GANGES, B.C. V0S 1E0
(604) 537-2344 FAX (604) 537-4243

Canadian Crossword

By Rick McConnell

- | | | | |
|----------------------------|-------------------------------------|-----------------------------|------------------------------|
| ACROSS | base | DOWN | 29. Vagrant street musician? |
| 1. Hearing organ | 36. Competent | 1. Work unit | 30. Sheltered |
| 4. Donation | 37. Christian artpiece | 2. Ache | 31. Sea bird |
| 8. ___ Cup | 39. Allow | 3. Caviar | 33. Rock-throwers |
| 12. Jem's boy-friend | 41. Poetically over | stacked in Flander's Field? | 35. Bottom line |
| 13. Base | 42. Globe | 4. Isle's coach Al | 38. Circle segment |
| 14. Pro ___ | 44. Soup pot | 5. English can | 40. Former PM |
| 15. Man. Valetown | 46. Elgin co.'s Valetown | 6. Polish area | 43. Golf result |
| 17. Male name | 50. Cheer word | 7. Robbed | 45. Unrefined |
| 18. Aaah's partner | 51. Rant's partner | 8. Cereal | 46. Snatch |
| 19. Guysborough, N.S. town | 52. Grand Falls' Valley-forest town | 9. Breath noise | 47. Molten rock |
| 21. Inhibition | 56. Assert | 10. And others | 48. Nights before |
| 24. Seltzer | 57. Serf | 11. Yin's partner | 49. Choice word |
| 25. Van. Isld. Railway | 58. Compartment | 16. Egg drink | 53. Alfonso's Queen |
| 26. Legal thing | 59. Big-mouth | 20. Pro.'s letters | 54. Olive or motor |
| 28. Feel triumphant | 60. Calendar span | 21. Aid | 55. Genetic stuff |
| 32. S.E. Asian country | 61. Palm leaf | 22. White ant | |
| 34. Decimal | | 23. Stroke | |
| | | 27. Salt in | |
| | | Sorel | |

Crossword solution found on Page C10

1	2	3	4	5	6	7	8	9	10	11
12			13					14		
15			16					17		
		18				19	20			
21	22			23		24				
25			26		27		28	29	30	31
32			33		34		35		36	
37			38		39		40		41	
			42		43		44		45	
46	47	48			49		50			
51				52		53			54	55
56				57					58	
59				60					61	



PASTORAL SETTING
Adjoining large farms, 3 bedroom character home on 1.59 acres, piped water, quiet road. \$139,000. Call Jessie.

OPPORTUNITY! POTENTIAL!
Large lakefront resort. Lots of room for expansion. Provides ideal living with income. Call Jessie to discuss business possibilities.

ACREAGES
For investment and development. Ganges - 12.5 acres, sewer and piped water; Fulford - 8.27 level acres, creek, pond. \$450,000 and \$175,000. Call Jessie.



NEW LISTING
3 br home on quiet road, close to town & golf course, 1800 sq.ft. living space in mint condition. Indoor garage 16 x 20 and special hobby or home occupation room 10 x 20. Landscaped lot. Quality finishing and appliances. A best buy at \$162,500. Call Jessie.

PRIVATE ISLANDS
Group of two 240 acre & 3 acre, not to be sold separately. Lovely bay, protected moorage. Many features. Located in southern Georgia Strait. \$1.M - terms negotiable. Call Jessie for complete info.

PASTORAL HOBBY FARM
18 acre nature farm, just minutes from Ganges. 4 bdrm, 2 bath main residence, large barn with suite built in and overhead storage bins. Good revenues, fenced & cross-fenced. Value \$198,500. Call Ed.

DUCK BAY OCEANFRONT
Lovely .63 acre oceanfront lot located near the head of the bay. beautifully treed, level lot with good ocean views. Summer moorage for the boater, exceptional opportunity to design and build your Island Oceanfront home. Fully serviced - Value \$179,500. Call Ed.

FULFORD MARINA
Rare opportunity to acquire the Gulf Island's newest marina. Located in Fulford Harbour next to the ferry terminal, the Fulford Marina is a full service marina, slips for 60 - 75 boats, turnkey operation. Further development potential. \$1,695,000. Call Ed.

SEA FOREVER
Outstanding high bank oceanfront lot with newly renovated small cottage. Ideal for weekend retreat, or comfortable living quarters while you build your Island home. South & west exposure, View, View, View. Ac quickly! \$169,500. Call Ed.

SOUTH FACING OCEANFRONTAGE
Outstanding 1.76 acre low bank oceanfront property with exquisite southern exposure. Newly renovated rancher with hobby room and 2 car carport. Superbly treed with garden and privacy. Walk on beach, very rare. \$539,000. Call Ed.

EXECUTIVE OCEANFRONT, WELBURY BAY
Exquisitely finished 4,080 sq.ft. home on easy care .69 acre oceanfront property fronting on Welbury Bay. Steps to beach with foreshore lease in place. Oceanfront living at it's finest. \$750,000. Call Ed.

PRIVATE ISLAND
Islands are Hot! and this one is a best Value Buy! 200 acres located just off shore from Port Hardy. Giant mussels, protected deep water bay, well treed, a superb investment in future fishing grounds, diving camp, etc. Just \$1750 per acre. \$350,000. Call Ed.

SOUTHEY BAY OCEANFRONT
Rare 1.19 acre oceanfront lot with frontage on Southey Bay. Seasonal moorage with superb ocean view. 2 bedroom cottage, community water, private. \$249,000. Call Ed.

RE/MAX® Realty of Salt Spring Island
a division of Small World Real Estate Company Inc.
136 Lower Ganges Rd., P.O. Box 1022, Ganges, B.C. V0S 1E0
Office (604) 537-9977 Fax (604) 537-9980

ISLANDS

Volunteer firefighters plan "gala of fireworks"

There will be prizes for everyone at the annual Hallowe'en party sponsored by the Volunteer Firefighter's Association slated for the firehall Wednesday, October 31, at 7 p.m.

Association president Pat Hennebery says a gala of fireworks will climax the fun-filled evening. Hennebery invites the island's parents and children to this annual event.

By CHRIS STEWART
Driftwood Correspondent

In other fire-related news, the burning ban has been lifted on Mayne for small fires only, according to Fire Chief Harry Lane. "You still have to have a permit and a shown address before burning debris," he said.

A grass fire on Village Bay Road this week was kept confined by the local volunteer firefighters, Lane reports.

"Despite this week's heavy rain, the undergrowth is still very dry," he said.

Parent information meeting

Twenty parents of Grade Seven, Eight and Nine students, from Saturna, Galiano and Mayne, were on hand for the Parents' Information session at the Mayne School, Thursday morning.

Principal Bruce Stewart outlined the Junior High program.

Assisted by teachers Eleanor and Ian Cocker, Barbara Vallee and Ray Andrews, Stewart explained the staff's expectations regarding students' assignments and behavioural policies. He reports parents displayed a strong interest in the school's program.

Upcoming events

• The annual flu clinic will be held at the Mayne Island Health Centre on October 27 and 31 from 1 to 3:30 p.m.

• "What every woman should know when her car stalls," and much more will be offered at the one-day auto clinic for women slated for Saturday, October 28 at 1 p.m. at the Esso Service Station. Conducted by Kevin Dean, under the auspices of Continuing Education, the half-day course is designed to take the fear out of unexpected car events, such as a warning noise, flat tire or stalled motor.

Also helpful to women, as well as men, is the course on fishing offered by local chartered fishing boat operator, Peter Sera, slated for Wednesday, October 24 at 7:30 p.m. at the school.

May McKenzie, co-ordinator for the Continuing Ed course on Mayne reports she is already working in the spring semester courses and would welcome any course suggestions the public wishes to include in the program. She can be reached at 539-2530.

• *Celebration*, the Mayne Island Little Theatre's musical extravaganza, initially slated for this fall, will be presented next spring, on the last weekend of March and the first weekend in April at the school gym.

Directed by Michael Crovato, the cast has been busy rehearsing for this lively production which is now planned to kick-off the coming of spring.

Plans are also underway for a Valentine's Day dinner and dance on February 16 plus the immense undertaking of a kaleidoscope of MILT'S past 21 productions, entitled *A Decade — Our*

MAYNE ISLAND *Scene*

Celebration Gala marking the tenth anniversary of this promising theatrical group. Slated for May 4, this show, to include everyone who has been part of MILT's casts, will highlight excerpts from every show MILT has produced since its inception 10 years ago.

MILT members will also convene the annual Christmas carol sing-a-long around the lighted tree at Miner's Bay on Christmas Eve.

• Alvin Funk, popularly known as "Mr. Mushrooms" will be at the Agricultural Hall on Thursday, November 1, to inspect the dozens of varieties of mushrooms Mayne Islanders are expected to bring.

Recently retired from Forestry Canada, Funk is a specialist in the field of mushrooms. On previous years is-

landers have brought as many as 125 varieties for Funk to examine. Sponsored by the local Agricultural Society, residents are encouraged to come armed with as many mushrooms as they can find. Funk will examine them all to determine which are edible.

Cubs and Scouts

Local Lions' members will sponsor the Cubs and Scouts this year. Ron Mitchell, Mike Bullis and Al Izzard will spearhead the committee. A good turnout of parents attended an information meeting held at the school Thursday evening to familiarize them with the Scouting program. More Cub and Scout volunteer leaders are needed. Interested persons should contact Mitchell.

FIVE STAR MOVING
Your local Moving Co.
537-9501
Fully licenced & Insured
Professional, Reliable Service
Randy Severn,
Gordon Lee





INVITATION TO A FREE SPIRITED LIFESTYLE



You are welcomed to our Saturday and Sunday Open House from one to four. Open House hours: Mon. - Fri., eleven to three, or call 537-9981 now for an appointment to view at your convenience.

- Sunshine and sparkling seaviews.
- Best Island value — quality construction, quality finishing, quality floor plans with bright spacious sensations.
- No care, landscaped grounds.
- Conveniently located within a five minute walk of the amenities of Ganges Village.
- 10.75% financing available.

\$169,500 to \$195,000



EILEEN LARSEN
Sales Rep.
537-5967

1101 GRACE POINT SQUARE
P.O. Box 454
Ganges, B.C.
V6S 1E0

537-9981
FAX #537-9551



ISLANDS REALTY LTD.
WE SET THE STANDARD

THE LARGEST REAL ESTATE ORGANIZATION IN THE WORLD
EACH OFFICE IS INDEPENDENTLY OWNED AND OPERATED



MULTIPLE LISTING SERVICE



ANNE WATSON
Sales Rep.
537-2284



ISLANDS



Early morning photograph captures the first sunlight of the day as the sun rises over a Gulf Island hillside. Sunny skies in the Gulf Islands help take the edge off the crisp fall air.

Salt Spring Stars

BRONWYNN ELKO



October 17 to November 14

Sexy Sadie was a Scorpio.

Of all the astrological signs, Scorpio is the one that astrologers love to love and love to hate.

At astrological conferences, where everyone wears little tags identifying their Sun, Moon and Ascendant, those unfortunate enough to have Sun and Ascendant (and God forbid, their Moon!) in Scorpio, have their table deserted — or filled with the opposite sex drooling onto their laps.

What is it about this sign that evokes so much fear and loathing, envy and magnetism?

Those four little words sum up Scorpio in a nutshell, without scratching the boil that festers this sign.

Power hungry? Give them an opportunity to grab the stage and they'll steal the show, or die trying.

Egocentric? They'll flaunt their incredible escapades, of which they are the star, until your eyes turn deep purple, their favourite colour.

So what is under this intense urge for attention, sexual power and self-exaltation?

Scorpio unconsciously seeks to KNOW itself. To taste the blood red guts of its purple-hearted, subconscious soul. Lasering through life like Flash Gordon, Scorpios catch their image fleetingly in the glitter of their lover's eyes. Every moment becomes a metamorphosis through matter. They transform every experience into the SELF.

Sex.

Transformation.

Creation.

Profound, enduring themes of a sign that nobly dares to dig to the roots of existence.

Sexy Sadie falls to dust, her charms withered, the food of worms.

Only the sparkling brave fathom whence she rises.

Deep in the sands, desert drums beat out the dreamstuff of the dying, blooded sun. The sands quiver and burst.

Up rise the phoenix. Up, up, across the purple-hearted sky. Tearing open yet again, the veiled mysteries of the dark soul of night.

Astro Report for October 17 to November 14

We could be on the social warpath later this month, as Mercury/Venus move into Scorpio, conjuncting Salt Spring's Moon in early November. Moods will be deep, unpredictable and touchy! Do not tread on any toes or souls of fixed signs — Scorpio, Aquarius, Taurus or Leo. Especially Aquarius and Scorpio, who have had many obstacles over the last year.

Peace — ripping is not beyond their capabilities.

Chiron is waning through his last stages in Cancer, readying his assault on Leo in spring of '91.

This maverick of the heavens brings havoc as we learn to connect ourselves to our transcendental OTHER. Chiron, the Wounded Healer pierces our hearts with KNOWLEDGE and the ultimate, alchemical truth of individuality. Leo and all fixed signs, will be in for a revelation as Chiron courses through Leo until September 1993. Alchemize your power or forever lose thy magic kingdom.

Sun enters Scorpio on October 24

Happy Birthday Blood of the Soul Scorpions! You've grown so much in the last year, it's breathtaking! There isn't a nook or cranny of the dark night you haven't ventured into. More than any other, you have seen the devil in god, and called him divine. You have stripped yourself naked before the fires of truth, lay open your heart to the forge and hammer.

And so the journey continues. Those of you born after November 8 are only part way through your transformation.

Fear is your enemy, do not cloak him behind a mask of pride. These next few years will take every drop of your purple blood to transform your fury and will into tools worthy of shaping your life.

Make deals with the devil (you can outsmart him now), and pay reverence to your Maker. Remember humility is the pride of the humble.

You can start by clipping those daggers you wear as nails (just for defense of course). And while you're at it, keep the shavings for your personal rituals.

You'll be doing lots. When Pluto, Lord of the Underworld is through tran-

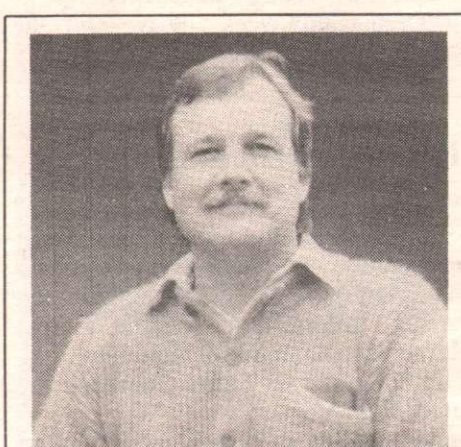
Ukulele workshop planned for Mayne Island students

Claude Kennedy, local school teacher and clinician for ukulele expert Chalmers Doane of Halifax, is excited about the upcoming ukulele and piano workshop slated for the Mayne Island school on November 8. Open to students from Galiano, Saturna, Pender and Salt Spring, as well as music specialists and parents, participants are urged to bring along an electric keyboard, plus a ukulele, if they have one, for the workshop which runs from 11 a.m. to 3 p.m.

A functional piano workshop, open to the community, gets underway at 5:30 p.m.

Kennedy's enthusiasm stems from his "hands on" experience with ukulele classes over the past 16 years. When he first met Doane at a Teachers Convention in Victoria and was introduced to his classroom ukulele program, Kennedy was fired with a desire to offer his own pupils this musical opportunity. He has served as a clinician at Doane's workshops ever since.

While teaching at Port McNeill for 13 years, and also at Port Alice, Kennedy toured Vancouver Island with his ukulele band offering as many as 18 performances in four short days. His musicians played on the steps of the Legislature, at



Claude Kennedy

the Victoria museum, in parks, street corners and in schools. Attired in their fluorescent pink T-shirts, featuring a ukulele, his pupils looked forward eagerly to their annual music tour. Kennedy plans to offer his Mayne Island pupils the same opportunity this coming spring.

"Normally my groups are concert-ready by April," Kennedy said, "but this year we'll make our first public debut at the Spaghetti dinner," sponsored by Neighbourhood House, to be held in the school gym, November 2.

**Moving to or from the Gulf Islands...
USE A PROFESSIONAL!**



NORTHWEST TRANSPORT LTD.

(604) 537-4839 GANGES
OUT OF TOWN CALL COLLECT

**HOMES "OF & FOR" THE FUTURE!!
ROSCOMMON PATIO TOWN HOMES**



**COSY COMFORT
FUNCTIONAL DESIGNS
MAINTENANCE FREE
ALL AMENITIES!!**

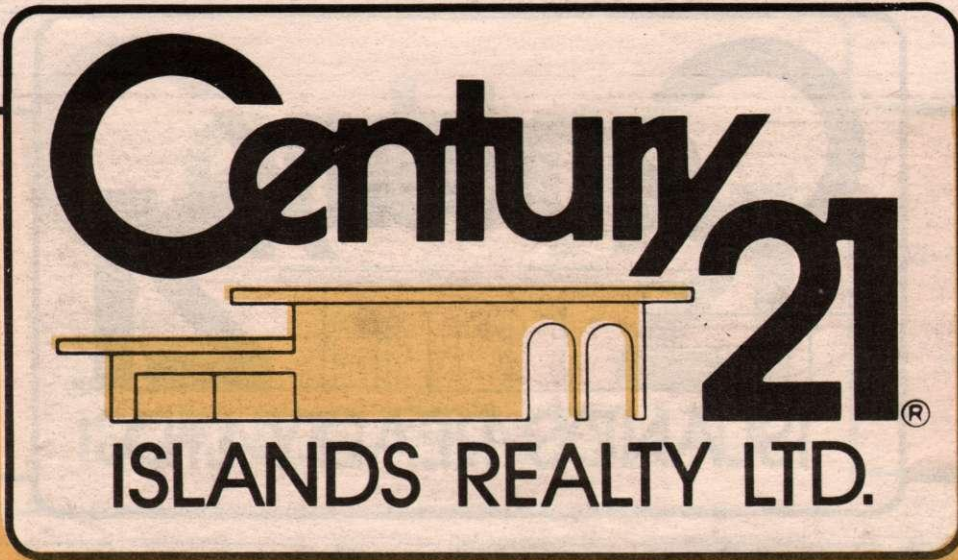
OPEN HOUSE SAT. & SUN 1 p.m. - 4 p.m.

\$134,000 TO \$163,000 MLS
Ann Foerster or Wynne Davies



PEMBERTON HOLMES

156 Fulford-Ganges Rd.
P.O. Box 929



SALT SPRING HEAD OFFICE
537-9981
537-9551 (FAX)

GALIANO ISLAND
539-2002 (Res & FAX)

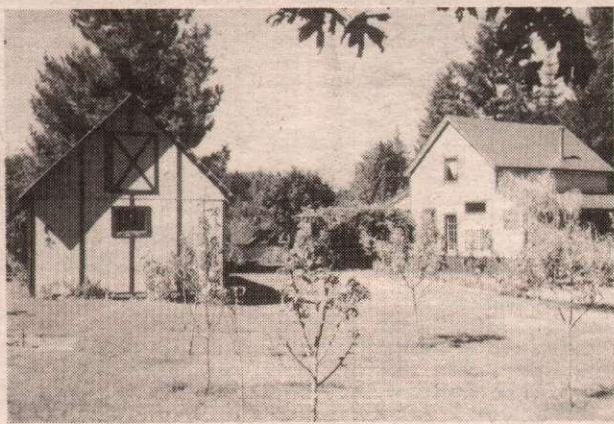
MAYNE ISLAND
539-5527 (Res)
278-1388 (Pager #5073)

PENDER ISLAND
629-6417 (Res) 629-6494 (Res)
629-3366 (FAX)
655-3411 (Toll Free from Victoria)

SATURNA ISLAND
539-2121 (Res)
253-7596 (Pager #2121)

Selected Properties

THIS WEEK'S FEATURED GULF ISLANDS LISTINGS



OLD FASHIONED FARMSTEAD
The home is situated on the highest level of the 5.77 acre parcel overlooking a small pasture, wandering creek, berry canes, fruit trees, duck pond and 2 large outbuildings. Plenty of decks for outdoor living with hot tub and barbecue pit. \$147,000 MLS.
CALL BECKY LEGG
537-5870



STEP BACK IN TIME
to a more tranquil era in this beautifully restored 3 bedroom heritage home on 1.22 acres of level, low bank waterfront in a sunny, quiet area. This is an outstanding Gulf Islands oceanfront property. \$645,000 MLS.
ARTHUR or SYLVIA GALE
537-5618



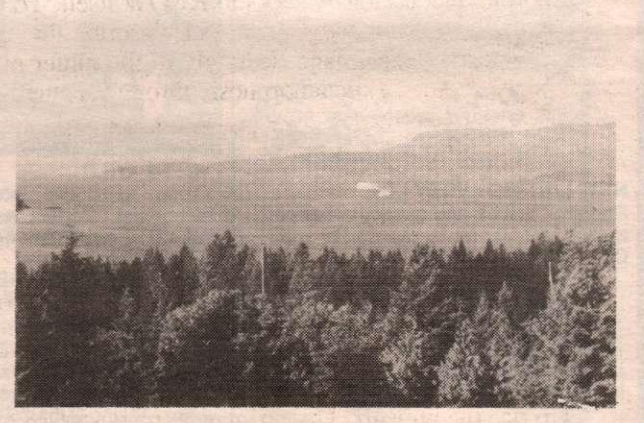
DRASTIC REDUCTION
This two bedroom charmer is still available. Minimum TLC will make this rancher an ideal retirement getaway. Directly across from St. Mary Lake beaches and fishing. Fruit trees and garden area. Only \$103,000 MLS.
CALL GEORGE PUHARICH
537-9111



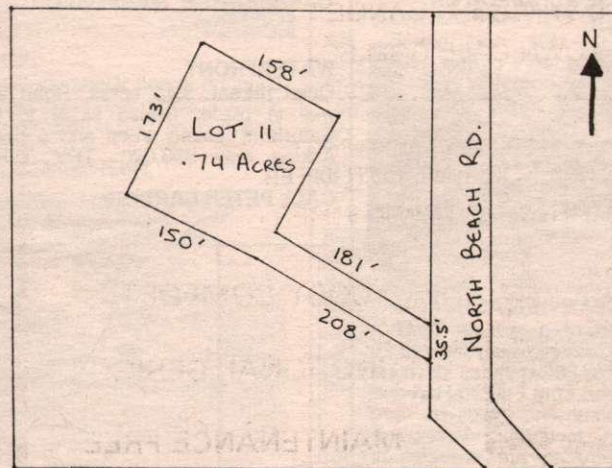
DRIVE BY 221 LANGS ROAD
You will agree this delightful home and property is a "must to see". some features are: quiet sunny location near lake, newly renovated one level 2 bedroom home with sundeck overlooking parklike acreage. For appointment to view, call Darlene. \$129,000 MLS.
CALL DARLENE O'DONNELL
653-4386



WALK TO THE FERRY
This ocean view home is packed with features such as hot tub with a view, heat pump, solar heat storage, huge sundecks, wet bar, rock garden, paved driveway, and minutes walk from Fulford ferry. Call now. \$249,000 MLS.
CALL PAUL TANNER
537-4509



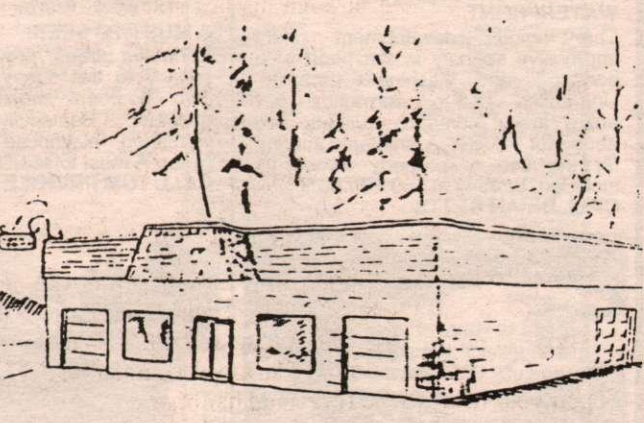
MAYNE ISLAND INCREDIBLE VIEW
Over ten acres of south facing land on east/west road, Mayne Island. Cleared building site with a super sunny exposure and views all the way to the Olympic Mountains. Water system and power plus shed. \$139,900 MLS.
CALL BRIAN BETTS
537-5876



NEW LISTING
Gently sloping building lot located 1/2 block from ocean access. Nicely treed for privacy with seaview. \$44,900 MLS.
CALL TOM PRINGLE
537-9996



HOME FOR LUNCH!
2.97 acres of trees and gardens all located in a good neighbourhood close to Ganges. Let the ample sunshine warm you in the pool and on the large deck. Plus a self-contained cabin. \$199,000 MLS.
CALL SARA FEE
537-4536



INDUSTRIALLY ZONED
A building that shows an excellent return. Fully rented. Try your offer. Great potential for expanding, situated on half an acre. Asking \$250,000 MLS.
CALL PETER BARDON
653-4576

SALT SPRING ISLAND OFFICE

1101 GRACE POINT SQUARE
P.O. BOX 454
GANGES, B.C. V0S 1E0
537-9551 (FAX)



BUYING OR SELLING, CALL US

537-9981

THE LARGEST REAL ESTATE ORGANIZATION IN THE WORLD. EACH OFFICE IS INDEPENDENTLY OWNED AND OPERATED.

® and ™ Trademarks of Century 21 Real Estate Corporation.



ARTHUR GALE
Sales Rep.
537-5618



SYLVIA GALE
Sales Rep.
537-5618



SARA FEE
Sales Rep.
537-4536



EILEEN LARSEN
Sales Rep.
537-5067



BECKY LEGG
Sales Rep.
537-5870



BRIAN BETTS
Sales Rep.
537-5876



JANET MARSHALL
Sales Rep.
537-5359



PAT JACQUEST
Sales Rep.
537-5650



GARY GREICO
Sales Rep.
537-2086



DARLENE O'DONNELL
Sales Rep.
653-4386



FINN RONNE
Sales Rep.
537-57

SALT SPRING ISLAND PROPERTIES



CHANNEL RIDGE VIEW

Avoid the G.S.T. and start building now. Plans approved and site ready for your "spec" home. Build before the taxman comes in the new year. See George for building blueprints. \$49,900 MLS.

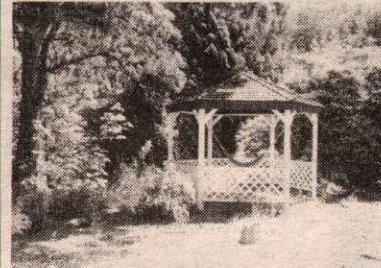
CALL GEORGE PUHARICH



OCEAN VIEWS SPARKLING IN THE SUN

Enjoying the magic of a SW exposure with spectacular views looking down Sansum Narrows, this handsomely appointed home features vaulted ceilings, beams and natural wood. Family room with rock fireplace, 3 bedrooms, workroom, in deck pool and much more. \$249,900 MLS.

CALL ANNE WATSON



OLD WORLD CHARM

Make yourself the proud owner of this dream property. Heritage style home - lovingly cared for with up to date oak kitchen, beamed ceilings, wainscotting & plank floors. Sited on 2+ acres of gardens, wood and orchard with lovely sea views. \$325,000 MLS.

CALL AILSA PEARSE



6.18 ACRES & TWO DWELLINGS

Main house has vinyl siding, metal roof. Well maintained. Second residence single wide mobile with addition. Property is level and sunny, mature trees, mostly fenced. Apple orchard, fenced garden area, carports and storage sheds. \$179,900 MLS.

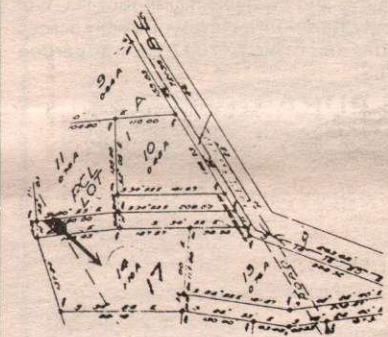
CALL BEV JOSEPHSON



MAYNE ISLAND INCREDIBLE VIEW

Over 10 acres of south facing land on east/west road, Mayne Island. Cleared building site with a super sunny exposure and views all the way to the Olympic Mountains. Water system and power plus shed. \$139,900 MLS.

CALL BRIAN BETTS



NEW LISTING - VIEW LOT

Requires a well and septic, but priced to sell. \$39,500 MLS.

CALL GARY GREICO



WET & WILD

Close to public access for great swimming. Perfect as a recreational retreat or retirement living. Asking only \$41,000 MLS.

CALL EILEEN LARSEN



INTOWN INTIMACY!

Luxury waterfront townhome at exclusive Grace Point. Southern exposure, sun filled decks, well designed layout and exceptional architectural features. Private moorage available at your doorstep. \$325,000 MLS.

CALL PAUL TANNER



BEAUTIFULLY DESIGNED

And situated on 12.99 acres at the end of a quiet cul-de-sac. Two bedrooms. Great kitchen, living and dining rooms. The basement has room for development. Asking \$109,000.

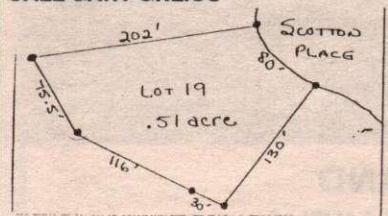
CALL PETER BARDON



NEAR THE OCEAN

Two lots side by side, .64 acre each, sunny, level, quiet area, some sea views, and both on water system and hydro. Pick a winner! Now listed at \$49,900 each MLS.

CALL SYLVIA OR ARTHUR GALE



CHANNEL RIDGE - PHASE 1
Located on Sunset Drive, this 6.40 acre property offers superb views of Stuart Channel, hydro and on piped water. Asking \$95,000 MLS.

CALL EILEEN LARSEN

JUST LISTED

Located in highly desirable Vesuvius area, this .51 acre lot has gentle slope to seasonal creek. Partially cleared & leveled, and ready to build on. Power, water and cablevision to lot line. Sunny & warm south west exposure. \$44,900 MLS.

CALL BECKY LEGG

SPECTACULAR MUSGRAVE WATERFRONT

This unique development offers impressive scenery in the heart of a boating and fishing paradise. Unparalleled beauty surrounds this entire area, incredible sunsets and abundant wildlife. A sheltered marina for the use of property owners is included. Starting at \$69,800 MLS.

CALL BRIAN BETTS



A MUST TO SEE!!!

Perimeter trees provide everlasting privacy to this sunny, quiet location. Two bedroom mobile with quality addition. Beautifully landscaped, workshop, playhouse and municipal water. A must to see!! \$91,000 MLS.

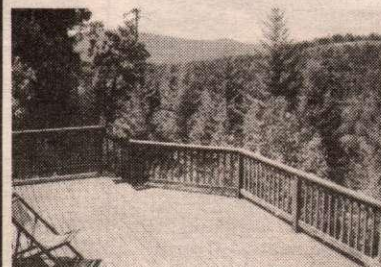
CALL TOM PRINGLE



WATCH THE SUNSETS

2 acres of super pasture, perfect for horses & complete with 2 stall barn and riding ring. Older, well built, 2000 sq.ft. home and asking \$169,000 MLS.

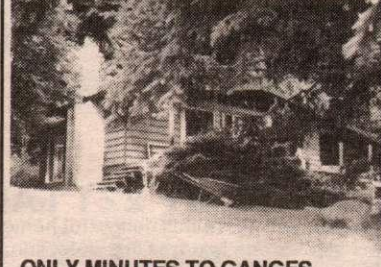
CALL EILEEN LARSEN



MOUNTAIN TOP HAVEN

This bright and recently renovated 3 bedroom home has ocean, lake and mountain views, 800 sq.ft. of deck allows you to enjoy all three at once. Heated by wood and electric. Enjoy sunshine all day long. \$179,000 MLS.

CALL GEORGE PUHARICH OR AILSA PEARSE



ONLY MINUTES TO GANGES

Comfortable and cosy 3 bedroom home on 1.47 acre with mature trees, garden area, chicken shed, rabbit run, concrete patio and refurbished deck. Lots of privacy at end of cul-de-sac. A must to see. PRICE REDUCED TO \$109,000 MLS.

CALL JANET B. MARSHALL



PRICE A PROBLEM?

Older single-wide mobile home in good condition situated in mid-island park. New sub-floor and hot water tank. Pad rent \$185 per month includes water, sewer, garbage. Priced for quick sale. \$16,000 MLS.

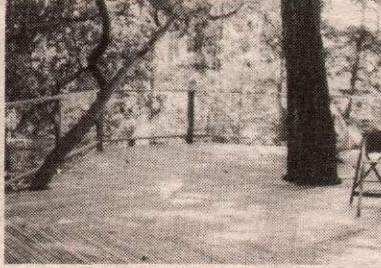
CALL ARTHUR OR SYLVIA GALE



RURAL, LAKEVIEW B & B RESIDENCE

Established home in beautiful condition. Ideally situated on nine pastoral acres with a view of Weston Lake. Outbuildings offer many possibilities for a hobby farm. A most desirable property. \$275,000 MLS.

CALL FELICITY ANNE GRANT



SUN LOVER'S PARADISE!

West coast contemporary open living design home on 2.40 acres. Unique woodwork and finishing throughout. 1500 sq.ft. of new sundecks. Sunny southwest exposure. Ideal for artist retreat. Expansive mountain views. \$139,900.

CALL FINN RONNE



REMOTE OCEANVIEW ACREAGE

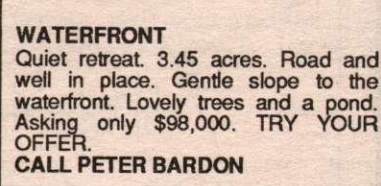
Originally part of a pioneer family's homestead. This selectively cleared 20 acres is approx. 30 minutes drive up Musgrave Road from Fulford Harbour. It enjoys southern exposure and oceanviews towards Vancouver island. No services are available at present. Located opposite old log barn. List price \$75,000.

CALL DARLENE O'DONNELL

EXCELLENT VALUE - WATERFRONT

Sunny 3.68 acres. Renovated chalet. New decks. Barn for horse lovers. \$159,900 MLS.

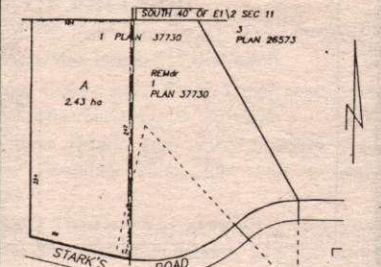
CALL GARY GREICO



WATERFRONT

Quiet retreat. 3.45 acres. Road and well in place. Gentle slope to the waterfront. Lovely trees and a pond. Asking only \$98,000. TRY YOUR OFFER.

CALL PETER BARDON



TAKE YOUR PICK

Of these two choice parcels. Heavily treed, level, mostly fenced. Desirable, quiet north end location. +6 acres - asking \$65,000, +7 acres - \$69,000. Offered subject to registration. MLS.

CALL SYLVIA OR ARTHUR GALE

No one covers the Gulf Islands like we do.



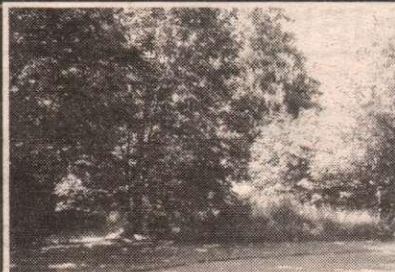
MLS
MULTIPLE LISTING SERVICE
PRE-APPROVED MORTGAGES THROUGH
Metropolitan Trust
LISTINGS ADVERTISED DAILY ON
Rogers Cable TV

- | | | | | | | | | | |
|--|--|--|--|--|---|--|--|--|--|
| | | | | | | | | | |
| ANNE WATSON
Sales Rep.
537-2284 | BEV JOSEPHSON
Sales Rep.
537-2532 | GEORGE PUHARICH
Sales Rep.
537-9111 | AILS A PEARSE
Sales Rep.
537-9261 | PETER W. BARDON
Sales Rep.
653-4576 | FELICITY GRANT
Sales Rep.
537-2374 | PAUL TANNER
Sales Rep.
537-4509 | TOM PRINGLE
Sales Rep.
537-9996 | MARY SMALL
Principal Agent
537-5176 | TOM HOOVER
General Manager
537-5918 |

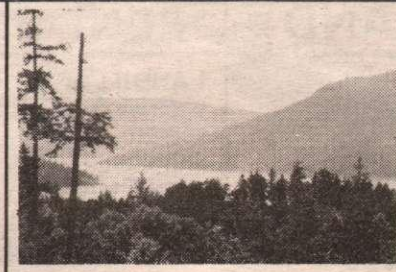
SALT SPRING ISLAND PROPERTIES



GOTT POINT WATERFRONT
Watch the deer browse below your deck. The boats going by the shore provide an everchanging panorama. 3 BR home, double garage, workshop, finished, and shore launching facility. One for appointment. \$250,000 S.
CALL GEORGE PUHARICH



PRIVATE WOODED ACREAGE
1.82 acres on quiet cul-de-sac. Private parklike setting. An ideal spot for a permanent residence or seasonal cottage. Water system to lot line. Desirable area. \$55,000 MLS.
CALL AILSA PEARSE



SUN - VIEW - PRIVACY
This picturesque 1.77 acres of very sunny property lies in a very unique setting. Very quiet private area on a cul-de-sac. Expansive ocean views + driveway into building site. \$75,000 MLS.
CALL FINN RONNE



OCEAN VIEW - 100 HILLS AREA
Rare opportunity to own 5 acres plus 2 level, 3 bedroom home in one of Salt Spring's more popular areas. Large garden area, fruit trees, separate garage, paved driveway and community water. This is private and close to Ganges. \$175,000 MLS.
CALL BRIAN BETTS



VENDOR FINANCING!
Attractively treed 5 acres with good garden potential and a sunny exposure. Driveway and building site in place. Minutes from the village, just off Mansell Rd. It won't last at \$55,000 MLS.
CALL PAUL TANNER



SUNNY TWO BEDROOM HOME
A quiet, sunny cul-de-sac on a pleasant .61 acre is this two bedroom home with daylight basement. Fruit trees, paved driveway, lots of deck area and carport are some of the features. Please call today for an appointment. Reduced \$110,000 MLS.
CALL ANNE WATSON



WAITING FOR A FAMILY!
Light filled 3 bedroom home sited on a very sunny, usable .88 acre lot. Plenty of lawn and woods for kids to play. Conveniently located near Ganges, this is a great starter or revenue home. \$94,000 MLS.
CALL PAUL TANNER



KITCHEN BOUTIQUE?
Creekside on McPhillips is the perfect address for a kitchen boutique. 866 sq.ft. of mezzanine overlooking the Mobile Market and other food related businesses. Only retail space left in this desirable location. MLS.
CALL BEV JOSEPHSON



ACREAGE NEAR FULFORD HARBOUR
Very pretty 5 acres, beautifully treed with stream through corner. Road roughed in to sunny, cleared & seeded area with pond. Located in quiet area near 2 lakes. This is an easy acreage to view. A good buy at \$59,000 MLS.
CALL DARLENE O'DONNELL



BIG BENEFITS!
Oceanfront commercial property with well established restaurant and owner's residence, next door to the Vesuvius Ferry. This is a unique opportunity to enjoy life in the Gulf Islands. \$375,000 MLS.
CALL PAT JACQUEST



READY TO SELL!
Bedroom on private 1.71 acres. New 30' cedar sundeck, over 1000 sq.ft. of living space, very sunny location, great for getaway or starter home. \$90,000.
CALL FINN RONNE



DREAM STUFF!
Comfy 3 br contemporary hideaway sitting on a ridge soaking up the sun. Wonderful expansive views of Active Pass, Mt. Baker, sea & mountains. Easy care 2 acres make this an ideal island retreat! \$144,000 MLS.
CALL PAT JACQUEST



IF WHERE YOU LIVE IS IMPORTANT
Grace Point Townhome, for the discriminating buyer, only steps to shopping and banks in Ganges Village. Eye pleasing with exceptional interior architectural features. Private moorage available. A rare one-of-a-kind offering on Salt Spring. \$295,000 MLS.
CALL GARY GREICO



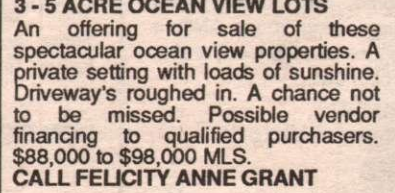
BEST VALUE
For your real estate dollar. New 2 bedroom, 2 bathroom home sitting on top of a rocky knoll, overlooking 2.17 parklike acres. Tiled counter tops, radiant heat and handmade wooden windows, and a separate garage/workshop are just a few special features of this home. \$135,000 MLS. Vendor may carry.
CALL BECKY LEGG



SUNNY PEACEFUL LIVING
This 3 bedroom house on .34 acre is situated in a very sunny quiet area. Close to Ganges and Long Harbour. Great getaway or starter home. Listing price \$92,000 MLS.
CALL TOM PRINGLE



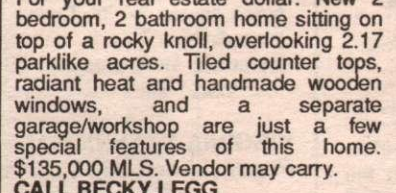
GET UP!
A walk on sandy beach enhance the beauty of this 1.6 acre waterfront property. Great dining site with drilled well. Asking \$9,500 MLS.
CALL EILEEN LARSEN



3 - 5 ACRE OCEAN VIEW LOTS
An offering for sale of these spectacular ocean view properties. A private setting with loads of sunshine. Driveway's roughed in. A chance not to be missed. Possible vendor financing to qualified purchasers. \$88,000 to \$98,000 MLS.
CALL FELICITY ANNE GRANT



FACING THE SEA
Sited on 5 acres. Very sound construction, 4 bedrooms, 2 bathrooms, plus den. Views to the water from the living and dining room. Asking \$175,000 MLS.
CALL PETER BARDON



ROOMY HERITAGE HOME
Roomy 5 bedroom, 2 bathroom classic home on sunny 5.29 acres. Central location close to golf, tennis, St. Mary Lake and ocean beaches. Organic garden, spring water and St. Mary Lake view. Rare! \$289,000 MLS.
CALL JANET MARSHALL



THIS LOT'S A SLEEPER
This 1.5 acre property is ready to build on. With selective clearing, this lot has the potential of having 180 degree views. Very sunny S.W. exposure. Close to ferry. \$65,000 MLS.
CALL FINN RONNE



STORABLE VIEWS OF FULFORD HARBOUR
Move into this older but well cared for home. Instant hobby farm, all that are needed are the animals! Fruit trees, mature. Gracious upland groves of maple and maples, spring water, what else could you ask for? \$170,000 S.
CALL FELICITY ANNE GRANT



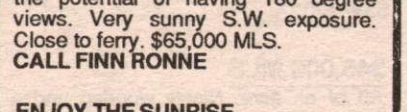
PICTURE PERFECT!
Looking for a well cared for 3 br home on a private, wooded 2+ acres? Full daylight basement for further development PLUS a super workshop for Dad or the craftsman. Don't miss out! \$149,000 MLS.
CALL SARA FEE



ENJOY THE SUNRISE
From deck, dining room, kitchen, living room or studio. Spacious 4 bdrm home with den and studio on 1.34 acres. Paved driveway, fenced garden, greenhouse and garage. Great location only five minutes from town. \$199,000 MLS.
CALL BEV JOSEPHSON



ENJOY THE SUNRISE
From deck, dining room, kitchen, living room or studio. Spacious 4 bdrm home with den and studio on 1.34 acres. Paved driveway, fenced garden, greenhouse and garage. Great location only five minutes from town. \$199,000 MLS.
CALL BEV JOSEPHSON



ENJOY THE SUNRISE
From deck, dining room, kitchen, living room or studio. Spacious 4 bdrm home with den and studio on 1.34 acres. Paved driveway, fenced garden, greenhouse and garage. Great location only five minutes from town. \$199,000 MLS.
CALL BEV JOSEPHSON



MLS
MULTIPLE LISTING SERVICE
PRE-APPROVED MORTGAGES THROUGH
Metropolitan Trust
LISTINGS ADVERTISED DAILY ON
Rogers Cable TV

GALIANO ISLAND
539-2002 (Res & FAX)
MAYNE ISLAND
539-5527 (Res) 278-1388 (Pager #5073)
PENDER ISLAND
629-6417 (Res) 629-6494 (Res)
629-3366 (FAX)
655-3411 (Toll Free from Victoria)
SATURNA ISLAND
539-2121 (Res) 253-7596 (Pager #2121)
SALT SPRING HEAD OFFICE
537-9981 537-9551 (FAX)



ARDITH GARNER
Galiano Sales Rep.
539-2002



PAUL TANNER
Sales Rep.
539-2002



VIRGINIA MARR
Mayne Sales Rep.
539-5527



FLYNN MARR
Mayne Sales Rep.
539-5527



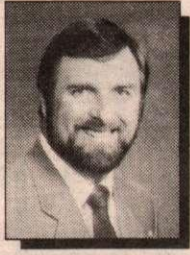
SUE FOOTE
Pender Sales Rep.
629-6417



JOHN FOOTE
Pender Sales Rep.
629-6417



ALEX FRASER
Pender Sales Rep.
629-6494



DON PIPER
Saturna Sales Rep.
539-2121

OUTER GULF ISLAND PROPERTIES

GALIANO ISLAND

SEMI-WATERFRONT LOT

Semi-waterfront 1.64 treed acres on Whaler Bay and Sturdies Bay Road. Close to stores and walking distance to the ferry. Court approval on offers. \$55,000 MLS.

PAUL TANNER or JANET MARSHALL
539-2002



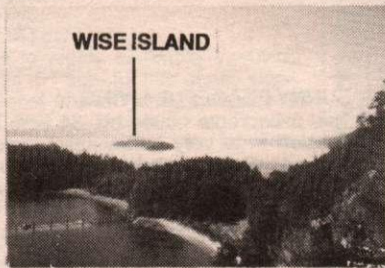
HOW ABOUT THIS ONE?

\$150,000 MLS

- * 1.79 level acres
- * 3 bedroom home with ocean view
- * 2 bedroom cottage
- * fenced-in garden area
- * 2 plum trees
- * wood shed
- * chicken house

WHAT ELSE DO YOU NEED?

PAUL TANNER or JANET MARSHALL
539-2002



WISE ISLAND

WISE ISLAND

\$45,000 MLS

100 feet lowbank waterfront property. .42 of an acre in a boaters paradise! Located on the west side of Galiano Island in Trincomali Channel. A terrific holiday get-away. Imagine...peace and quiet! There is even a water system. For more information, call...

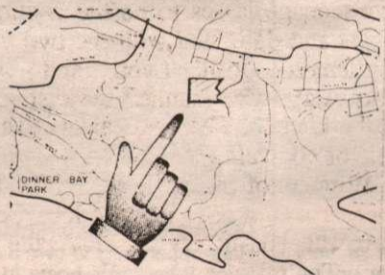
PAUL TANNER or JANET MARSHALL
539-2002

\$45,000 MLS

.98 of an acre. Nicely wooded and a gentle slope. The beautiful arbutus and cedar trees give this property a peaceful "park-like" setting. Close to an ocean access and on a water system too! Call...

PAUL TANNER or JANET MARSHALL
539-2002

MAYNE ISLAND



FOREST HOMESTEAD
\$160,000 MLS

This is an opportunity to have a true forest homestead in a marvellous island setting. Located in the center of Mayne Island this level ground is covered in second growth forest. Walk through this wonderland of fir and cedar, step over fallen trees covered in green moss, listen to the thousands of birds that abound on the property and imagine this as your home. These large island properties are becoming increasingly rare and this is an opportunity not to be missed. Its kind will not be along again for a long time if ever. Call...

VIRGINIA & FLYNN MARR 539-5527
Pager (24 hrs) 253-7596 #5073



OCEAN VIEW HILLSIDE
\$120,000 MLS

10 acres of incredible ocean views to south west and sweeping around to the north! This is forest land accessible by private road with hydro across the lot. Owner is anxious to sell immediately. This is an opportunity to own incredible view property. Make an offer! All reasonable offers will be considered. Call...

VIRGINIA & FLYNN MARR 539-5527
Pager (24 hrs) 253-7596 #5073

LOTS OF BUILDING LOTS

We have a large selection of excellent building lots available at prices starting as low as \$14,500. Large and secluded with a variety of features they offer a perfect entry to island life. Some are adjacent allowing the purchase of two or more for a larger holding and greater seclusion. Some are a great bargain with very eager vendors. And others are just plain nice! Let us send you your own complete catalogue, maps and other material on Mayne Island to tempt you. Call...

VIRGINIA & FLYNN MARR 539-5527
Pager (24 hrs) 253-7596 #5073

PENDER ISLAND

LAND!! LAND!!

We have a great selection of affordable lots UNDER \$20,000, VIEW properties from \$27,000 and acreages starting at \$55,000 for 6 acres!! Call...

JOHN & SUE at 629-6417,
or 655-3411 toll free from Victoria

WATCH THE BOATS GO BUY...
\$139,000

Will secure your seat beside the cosy fireplace, in the large dining room, or on the full length sundeck, from which you can watch ALL the boats..and the ISLANDS, and the MOUNTAINS. Sea this with John & Sue. Call...

JOHN & SUE at 629-6417,
or 655-3411 toll free from Victoria

PICTURE THIS!!

\$324,000

...427' of accessible OCEANFRONT!!! Selectively cleared, with your choice of building site, arable land and milled lumber. This property has a foreshore license and affords excellent moorage in Browning Harbour. Call...

JOHN & SUE at 629-6417,
or 655-3411 toll free from Victoria

OUTSTANDING OCEANFRONT
\$595,000

...with over 700' of easily accessible, walk-on beach, on Colston Cove and Navy Channel. There's lots of privacy, and this delightful property includes two homes, PLUS a charming summer cottage. Call...

JOHN & SUE at 629-6417,
or 655-3411 toll free from Victoria



GREAT VALUE LIVING!!!

\$98,000

...2 level, 4 bdrm home, with country living kitchen, spacious living-dining room AND a workshop for Dad. On 2 acres of fenced, arable land, with a SUPER well!!! Call....

JOHN & SUE at 629-6417,
or 655-3411 toll free from Victoria

VIEW PROPERTIES

Mountain & valley view, with driveway...\$24,500

Ocean view, on quiet cul-de-sac.....27,000

Ocean view, with easy access.....29,900

Ocean view, driveway in, house-site.....35,000

Ocean & valley view, driveway, cul-de-sac..37,500

All these lots are on municipal water. I also have non-view lots for under \$25,000. Call....

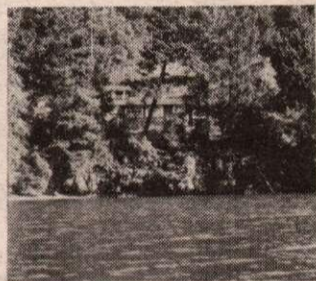
ALEX FRASER at 629-6494

COZY COTTAGE

Private log cottage on .98 acre with separate sleeping cabin and garage/workshop. Ocean glimpses, large trees, and abundant wild flowers highlight this property. \$79,900 MLS.

ALEX FRASER at 629-6494

SATURNA ISLAND



BOOT COVE WATERFRONT
\$125,000

Cozy 3 bedroom cottage with stone fireplace on Boot Cove. Bright and sunny, build your own dock or good anchorage available. Call...

DON PIPER 539-2121

RARE CLIFFSIDE LOT

Fantastic view over San Juan Islands. Driveway and hydro ready to build. 2/3 acre level lot. \$79,500. Call...

DON PIPER 539-2121

TUMBO CHANNEL WATERFRONT

Low bank with private beach. Cottage almost finished. Seasonal moorage. Close to fishing grounds. \$119,000. Call...

DON PIPER 539-2121



TOP OF THE HILL
\$149,000

The best of island living...modern home...acreage...view...boating facilities...south facing...fenced gardens...move in ...buy now!!!

DON PIPER 539-2121

LOTS OF VALUE!!!

128 and 130 East Point Road: Close to ferry. .4 acre each, well treed. \$17,000 each.

112 Boot Cove Road: South facing waterfront, lowbank, beautiful arbutus. \$69,000.

111 Payne Road: Two good building sites, garage. Possible view, just like a park. \$18,000.

680 & 682 Tumbo Channel Road: 2 well treed level lots close to beach access. \$18,500 each.

624 Tumbo Channel Road: "Ready to build" driveway, building site, well, hydro, water view. \$28,000.

616 Tumbo Channel Road: Gently sloping forested lot by beach access. \$21,000.

DON PIPER 539-2121

ISLANDS

Galiano considers options on MB landfill land

Galiano solid waste site

A meeting of representatives from island groups gathered at the south hall recently to discuss the solid waste disposal area and MacMillan-Bloedel's most recent correspondence with the Galiano Club on the facility's future.

By ALISTAIR ROSS
Driftwood Correspondent

The company has turned down the Galiano Club's request for a renewal of the lease for a further three years and instead proposes islanders purchase outright Lot 17, the 163-acre parcel of land which contains the "dump" site.

The asking price is \$1000 an acre plus the value of standing timber — an amount yet to be determined. If islanders are interested in purchasing the property the company will sign a lease for a year so financial and legal arrangements can be completed. The present lease on the "dump" site is up at the end of November, so the matter is of immediate concern to all islanders.

With the recommendation from a recent island survey "to keep our garbage at home and recycle," the Wednesday meeting decided to ask the Galiano Club if they wished to continue to be responsible for the solid waste area as a total recycling facility, and if so, if they would be prepared to coordinate the larger business it must become. Paid employees would be required, it was felt, plus the help of as many volunteers as are active at this time.

Depending on the Galiano Club's decision (a general meeting of the club may be necessary for a final decision), a plan can then be put in place to organize the new facility and find a location for it.

The present solid waste disposal area has been used since 1972 when leaching at the former site in Bluff Park became evident and that area was closed. At that time, representatives from the Galiano Club, the Chamber of Commerce and island doctor Hart Scarrow negotiated the

GALIANO ISLAND *Scene*

lease of the present site on Lot 17 with the timber company. Experts from the federal government have estimated the present site can be used for close to a century more provided current recycling methods are employed.

The Litterathon mystery

The children of Galiano Elementary School held a Litterathon recently. The morning clean-up (with parents to help) saw the children all over the island with garbage bags handy, scouring the grassy verges of the roads for pop tins, papers and the like. Voluntary pledge money sweetened the deal for the youngsters.

A competition was held to see which class could collect the most refuse by weight, and the pledge money was divided accordingly. Each group will now be able to use their funds for either class projects or field trips.

Over 2,000 pounds of refuse was collected, as weighed by Jim Scoones and Gordie Palmberg, at the solid waste disposal centre — 1,000 pounds at Coon Bay alone. Three young collectors — Benjamin Funston, Sass Millre and Stefan Ziwicki — assigned a wooded area at Coon Bay to check for garbage, were astonished to find money along with the odd tin can and bottle. The money included denominations of 10 and 20 dollars, plus a number of coins.

Parent sponsor Pam Funston had them check further and they eventually found a lady's purse complete with identification cards and other personal items. The owner was Galiano's Mary Wilson, our taxi driver — Mary had her purse stolen from the taxi in early September. She, of course, was delighted to have it back and rewarded the boys for their quick eyes and their honesty.

"It was an exciting day for the whole school," according to Principal Elizabeth

Brinson, "and a successful one."

Mary Wilson certainly agrees with Mrs. Brinson on this. Other islanders benefit as well. We now have a cleaner environment where nothing detracts from the beauties of nature on our roads and in our parks. Thanks also to organizer teacher Catherine Maneker and parent Shirley Coulter.

Pies, pies and more

Ella Johnston of the Galiano Club proudly reports a profit of \$1472.46 on the group's recent Blackberry Festival and tea.

"The two-hour event was well attended and sales were brisk," according to organizer Johnston. "Everything was sold long before 4 p.m."

She was pleased to have the help of five teenage lasses to do the waiting on tables and delighted with the two young gentlemen, Josh Lyon and Adam Andrusiak, who manned the dishwasher in the kitchen. The Festival involved the help of 40 in all.

Winners of the raffle for a blackberry cheesecake made by Shirley Coulter were the Kissingers of Montague Harbour. Thelma Beatty and Bill Shead each won jars of jam.

Sod turning

The official sod turning ceremony for the health care centre is set for Thursday, October 18 at 2 p.m. All islanders are encouraged to be present.

Raffle winners

Winners in the recent and very successful health care centre raffle were announced this week. Audrey Brock of Richmond won a dinner for two at the Woodstone Inn, Arla Saare a \$50 gift certificate from the Dandelion Gallery, Renee Marlow a \$50 gift certificate from

the Camas shop and Lynn Connell, the major prize, an antique tea service.

Craft fair

The 11th annual North Galiano Christmas Craft Fair is planned for the Remembrance Day weekend, Saturday and Sunday, November 10 and 11. Island groups are now at work preparing food and sewn items for the sale. Others wishing to participate should phone Dorothy Ross at 539-2294 for details about participation.

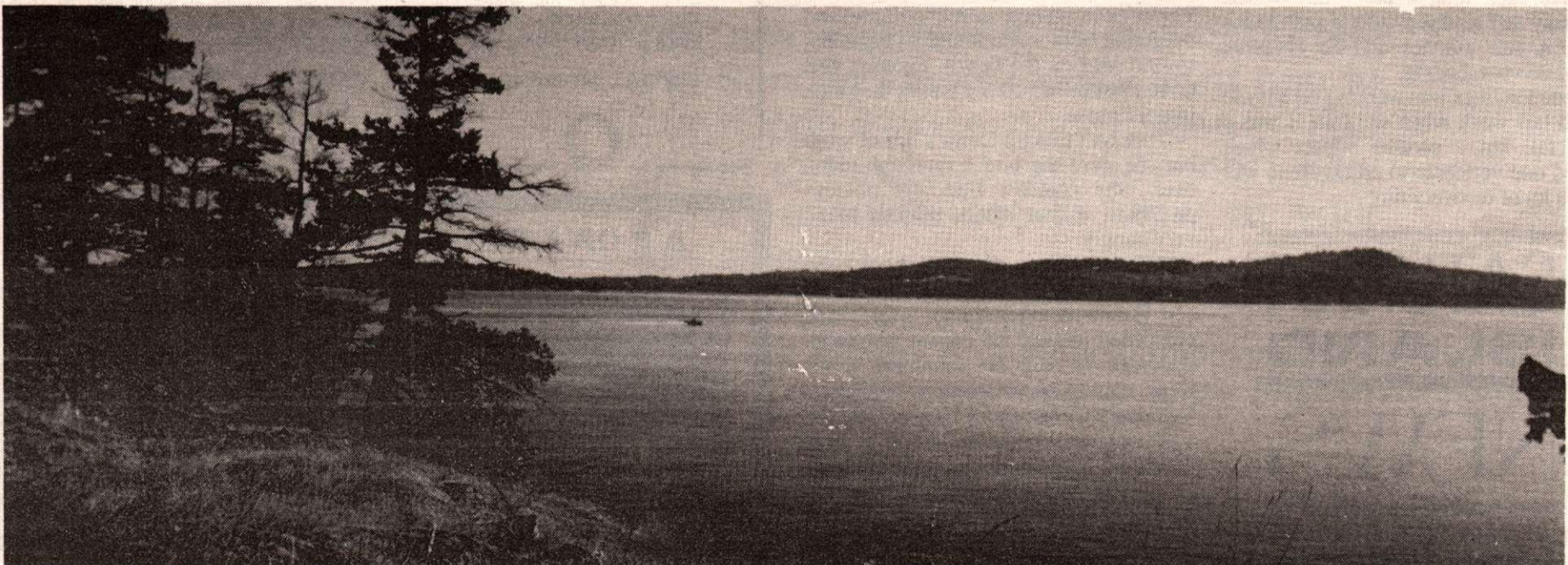
Coming events

October 25 — Concert by Brad Prevedos and Mary Reher in North Galiano Hall, 7:30 p.m. Tickets \$8.00.

October 28 — North Galiano Pumpkin Carving Party, 2:30 p.m., for children and adults. Bring your pumpkin and a carving implement and be ready for Hallowe'en on Wednesday the 31st.



A VERY RARE COMMODITY INDEED!



How many south facing 6.74 acre waterfront properties do you know that are studded with arbutus and evergreen between the open moss covered rocky knolls? Not many, right? This stunning property drops down to almost 500 ft. of waterfront in a series of easy benches. There are many incomparable views — over Satellite Channel in the foreground, the Saanich Peninsula and the Malahat in the midground and the Olympic Mountains in the background. This acreage offers great privacy in a parklike setting. There is no other waterfront property in the Gulf Islands quite like this one. Let me show you! \$425,000.

GULF ISLANDS REALTY LTD.

P.O. Box 750, Ganges, B.C. V0S 1E0

Please call
DAVID DUKE
653-4538

ISLANDS

Saturna couple united

On the beautiful fall afternoon of Saturday, September 8, Pam Johnson and Rick Lind joined hands in marriage at St. Christopher's Anglican Church.

Ushers Jack Vincent and Don McLellan seated guests while Rev. George Taylor waited with the groom, the best man (Walter Mackie) and groomsmen (John Carniel and Pat Ropars) at the altar.

The bride was radiant in a three-quarter length white lace dress, encompassed by the material of the train, which was part of her handmade headpiece with pearls, crystals and beads.

Pam was preceded by her bridesmaids, Kristina Cryderman, Eve Patterson and Barb Ropars. All wore white and carried bouquets of roses which were created by Carol Money. Matron of Honour, Debbie Pobst was dressed in soft pink and green. The ring-bearer Cory Nelson, Pam's youngest son, and flower girl Miranda Middleditch, dressed in pink lace also preceded the bride. Miranda gently spread rose petals down the aisle.

The church, beautifully decorated for the early fall wedding by Kristina, was filled to overflowing with family and friends. The church hushed as Pam was escorted down the aisle by her oldest son Fergus Ogilvie. Music for the occasion was provided by Pat Ropars.

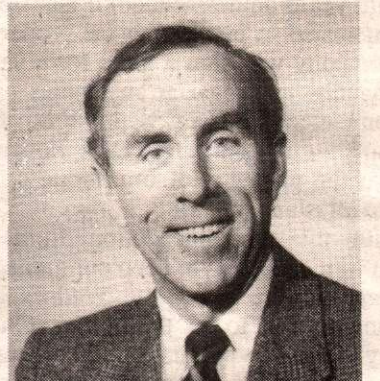
After the ceremony everyone joined the couple for dinner, gift opening and dancing at the Community Hall. With cans dragging behind their decorated van and rice everywhere, Rick and Pam left for a well deserved honeymoon on the West Coast of Vancouver Island.



Pam Johnson and Rick Lind were recently married at St. Christopher's Anglican Church, in a "beautiful" fall ceremony.

FREE MARKET EVALUATION

For prompt, courteous real estate service Call PETER LAMB



Office: (604) 537-5577
FAX: (604) 537-5576
Home: (604) 537-4859

GULF ISLANDS REALTY LTD.

P.O. Box 750, Ganges, B.C. V0S 1E0

Saturna folk and fowl included on injury list

There are a few more names to add to Saturna's convalescent list.

By JACQUES CAMPBELL
Driftwood Correspondent

Dave Jack took a nasty fall on his walkway and received quite a gash to his head. A few stitches and he is home again, slowly mending.

Rene Hollings was working on Mayne Island last week when she fell. It was a short fall but a serious impact which caused one vertebrae to crack. Rene will need a lot of recovery time.

tal she was back at the school board office. Now if that's not dedication to her job I don't know what is. (Just a little plug for my mother!)

On the long weekend Laura had a patient of a different sort. Young Fabian Taylor (a weekender to Winter Cove) and his friend from town, found a young distressed bird on the beach. Figuring that there must be something wrong they took it to the nurse.

This isn't exactly Laura's line of work but she gave the bird a thorough going over. She couldn't find any obvious problems, except that it seemed to be very hungry.

After perusing the bird book, she found that it had to be a falcon of some sort. Laura donned leather gloves and proceeded to feed the patient raw meat. Although he ate, he continued to be weak. Laura took the falcon to the Sidney Veterinary Clinic where Monica Dahl did a physical and found the bird to be malnourished. She placed him on an i.v. unit.

Monica was also able to enlighten Laura about the defense mechanism which makes the bird lie on its back and protect himself by showing his talons. This had been mistaken for another sign of weakness.

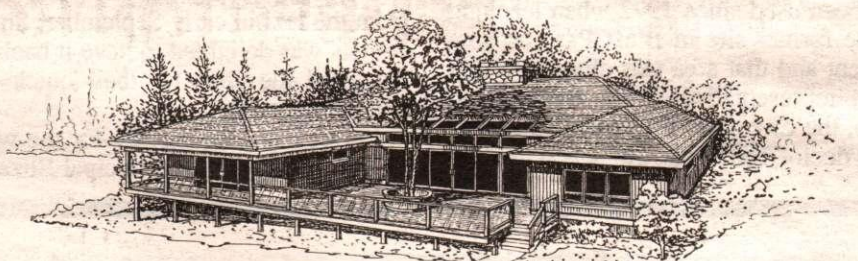
Don't forget that the Eddie Reid Memorial Library is now open Thursdays as well as Saturdays from 11 a.m. to 3 p.m.

Till next time

SATURNA ISLAND NEWS

School trustee Lorraine Campbell was at Salt Spring negotiating with the teachers when she suddenly became nauseous and took quite ill. We might imagine what the cause was in light of the discussions but the doctors came up with a different cause. There is a nasty little virus which attacks the middle ear and the results apparently are quite dramatic but short lived.

After spending the night in the hospi-



Planning and building your Dream Home can be a happy experience but there can be disappointment if it doesn't turn out quite as visualized. This is often caused by sketchy plans, because even the best Builder can't read your mind. We combine our ideas and experience with your wishes and produce very specific plans at reasonable cost. That's Dream Insurance!
We'll be happy to discuss your plans without obligation.

Call BILL MONAHAN THE OMEGA DESIGN TEAM
SALTSPRING ISLAND



P.O. BOX 63 GANGES B.C. V0S 1E0 PHONE 537 4290

A 3 OR 4 BEDROOM HOME FOR \$87,500?



YES, INDEED!

Buy this duplex and let your tenant's rent cover the mortgage payment or rent out both sides. Current annual revenue \$15,060. Have two homes appreciating in value! These are strata units and must be purchased together but one side could be sold later.

SIDE A: 1400 sq. ft.; 3 BR, fenced garden, shed
SIDE B: 1530 sq. ft.; 3-4 BR, fenced garden, shed

Serviced with piped water and sewer. \$175,000 MLS.

DONNA REGEN, CGA
537-2845

GULF ISLANDS REALTY LTD.

P.O. Box 750, Ganges, B.C. V0S 1E0

Your Home . . .

ISLANDS

PROVINCIAL ROUNDUP

By Hubert Beyer

BRIDGE Scores

Crown land again available

Crown land can, once again, be leased for agricultural purposes, but only by farmers who are able to demonstrate an economic need for additional land.

Crown land has not been available for lease for agricultural purposes since the Crown Lands Ministry called for a comprehensive review of its agricultural lease program in the spring of 1989. At that time, the ministry appointed an independent commissioner, David Gillespie, to review the existing program and come back with recommendations.

The new policy of leasing Crown land for agricultural development only to farmers who can prove an economic need for the additional land is in keeping with one of Gillespie's major recommendations.

"The changes in our policy provide for higher standards of management and development of agricultural Crown land than ever before. These changes should also reduce land use conflicts involving rural Crown land," said Crown Lands Minister Dave Parker.

Surgical registry

A computer program model of a proposed surgical registry has been developed, and the full-fledged registry is expected to be in place by next April.

Health Minister John Jansen said last week that the registry will help patients awaiting surgery determine, in consultation with their physicians, which hospitals and surgeons are best able to

"provide the particular medical care they need in a timely fashion."

In addition to the general surgical registry, the Provincial Advisory Committee on Cardiac Care is developing a cardiac surgery registry.

"Pressures and challenges faced by the health care system demand innovative, creative and effective responses. I think the development of surgical registries is an important step in this direction," Jansen said.

Fake milk products review

Agriculture minister John Savage last week appointed a seven-member committee to review provincial regulations governing the use of imitation milk products. The group will review the use and availability of imitation milk products with regard to international trade, health, nutrition, labelling and the pure-food image of dairy products.

The committee will deal primarily with imitation cheese, the replacement of milk fat in dairy drinks with substitutes such as canola oil, and the nutritional and public health aspects of dairy substitutes.

Products such as tofu, soymilk and margarine are not governed by the Milk Industry Act and are, therefore, not included in the review.

The committee will be chaired by Dr. Shuryo Nakai who heads the University of British Columbia Food Sciences department. The report will be due in January 1991.

Beetle attack solutions

Forest Minister Claude Richmond last

week announced an expansion of the forest ministry's program to combat the mountain pine beetle infestation in the pine forests of the Okanagan timber supply area.

Control measures include using sex attractants as baits in appropriate stands; salvaging attacked timber; harvesting timber that is currently under attack, and harvesting the most susceptible stands to reduce further infestation.

"All the harvested and salvaged areas will be reforested, as required by law. This will result in new, healthy forests," Richmond said.

To speed up the program against the beetle, the annual allowable cut for the supply area has been increased by 200,000 cubic metres a year for three years, effective immediately. An appropriate volume, the minister said, will be allocated to the Small Business Forest Enterprise Program.

Paper Expo

More than 70 B.C. companies and about 300 Eastern Canadian and international firms will exhibit their products and services at Pacific Paper Expo, Western Canada's first major pulp and paper conference and trade show.

The four-day conference and three-day exhibition will be held November 6 to 9 at the Vancouver Trade and Convention Centre. International Business Minister Elwood Veitch said that more than 5,000 industry visitors are expected to take in the event.

Gulf Islands Bridge Club winners on October 8 were as follows:

Anne McConnell and Jean Herring; Norm McConnell and Sue Bradford; Peter Jacquest and Fred Struve; Elise Olsen and Shirley Love; Wim and Ima Krayenhoff.

On October 9 the winners were:

NORTH-SOUTH

Fred Struve and Peter Jacquest; Wim and Ima Krayenhoff; Bill and Betsy Minter; Isabelle Richardson and Helen Shandro.

EAST-WEST

Blanche Poborsa and Jim Burford; Elise Olsen and Jean Herring; Cassie Cherniwchan and Dorothy Ballantyne; Edith Owens and Tony Luton.

On October 22, the Unit Championship game will be held in Meaden Hall at the Legion. Lessons will start on Monday, October 29, from 10:30 to 11:30 at the Legion. For further information phone Norm at 537-9806.

Crossword Solution

E	A	R	A	L	M	S	G	R	E	Y
R	I	O	R	O	O	T	R	A	T	A
G	L	E	N	B	O	R	O	A	L	A
	O	O		G	L	E	N	B	I	G
H	A	N	G	U	P		F	N	O	
E	N	R		R	E	S		G	L	O
L	A	O	S	T	E	N		A	B	L
P	I	E	T	A		L	E	T	O	E
		O	R	B		T	U	R	E	F
G	L	E	N	C	O	E		R	A	H
R	A	V	E		G	L	E	N	W	O
A	V	E	R		E	S	N	E	B	I
B	A	S		Y	E	A	R		O	L



PEMBERTON HOLMES (GULF ISLANDS) LTD.

537-5568
P.O. Box 929, Ganges, B.C.
156 Fulford-Ganges Road
Victoria Direct Line 652-9225 Fax 652-9225

1887 - 1990
103 years
as your
good
neighbour!
1887 - 1990



UNIQUE REGINALD HILL RARE OPPORTUNITY 1.45 ACRES

\$399,000 MLS

- spectacular ocean views
- tasteful decor throughout
- private master suite
- hot tub and sauna
- multi-level decks, dbl garage
- Call Maggie Smith or Phyllis Fetherston



QUALITY EXECUTIVE HOME SEAVIEWS OF SANSUM NARROWS

\$249,000 MLS

- 3br,3 baths,paved drive
- delightful decor
- finished daylight basement
- private .68 acre,SW exposure
- finished garage & dbl carport
- Call Maggie Smith



FULFORD VILLAGE OCEAN VIEW HOME

\$149,000 MLS

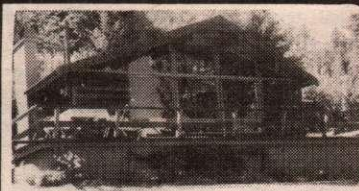
- superb location - walk to village
- shopping & ferries
- bright & sunny
- large studio area
- see this today
- Call Arvid Chalmers



HUNDRED HILLS VIEW LOT WEEKEND COTTAGE INCLUDED!!

\$129,000 MLS

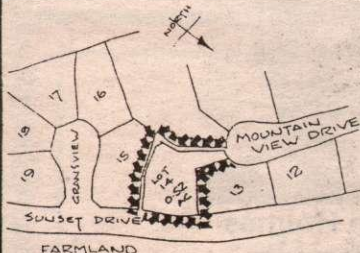
- easy access off Old Divide
- mature cedars dominate
- cottage had piped water
- zoning permits home & cottage
- 4.75 acres
- Call Wynne Davies



VIEWS OVER GANGES HARBOUR

GARDENER'S DELIGHT \$135,000 EXCLUSIVE

- immaculate 2 bdrm & den
- beautifully landscaped 1/2 acre
- large deck & patio
- close to village
- outbuildings, chicken coop
- excellent shared well
- Call Maggie Smith



MOUNTAIN VIEW DRIVE PRESTIGIOUS BUILDING LOT

\$55,000 MLS

- 1/2 ac overlooks Sunset Dr. farms
- access off Mt. View cul-de-sac
- water, hydro, phone & cable
- Call Wynne Davies



PRIVATE TRANQUILITY CONVENIENTLY LOCATED

\$84,000 NEW PRICE! MLS

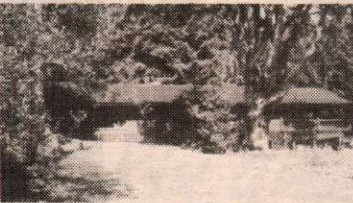
- 6 sunny acres off cul-de-sac
- farmland,lake,& ocean views
- build your dream home here
- roughed in driveway to site
- shared well yields 3 gpm
- Call Ann Foerster



INVESTMENT OPPORTUNITY HERITAGE BUILDING

\$495,000 MLS

- Garner House & Emily Carr's studio
- excellent location
- double lot
- great potential for development
- Call Arvid Chalmers



CLOSE TO TOWN GREAT FAMILY HOME!

\$159,000 MLS

- 4 bdrms,dbl car garage
- completely fenced back yard
- large rec room
- 28 x 22 covered sundeck
- cul-de-sac
- Call Phyllis Fetherston



ONE OF A KIND - CAR WASH

\$35,000 MLS

- excellent opportunity - be the boss
- only carwash on the island
- good lease-great location
- detailing & polishing
- power wash equipment included
- view by appt. only please
- Call Maggie Smith

BUILDING LOT ST.MARY HIGHLANDS

\$35,000 MLS

- sloping treed lot
- piped water & hydro at lot line
- nice area of homes
- near all amenities
- Call Maggie Smith

SELECT SITE CHOICE SCOTT POINT AREA

\$89,900 MLS

- easy access to 2.2 sunny acres
- clearing will improve seaview
- sm.cabin & trailer on property
- satisfactory perc test
- excellent well
- Call Ann Foerster or Mary Woods

100 HILLS AREA - VIEWS! SUPERBLY MAINTAINED HOME

\$205,000 MLS

- 3 bdrms plus den
- large family room
- wrap around decks to enjoy views
- easy level access - lots of sun
- Call Carol Fowles

SOUTH SALT SPRING ISLAND 160 ACRES - 1/4 SECTION

\$495,000 MLS

- subdividable land
- act fast
- Call Arvid Chalmers

CHANNEL RIDGE OCEAN VIEW LOT

\$79,500 MLS

- 1.9 acres treed
- very private,easy building
- prestigious area
- gentle sloping lot
- Call Phyllis Fetherston

Capital Mental Health Association Multiple Sclerosis Society Programs for mentally handicapped St. John Ambulance Individual, Marital and Group counselling
 G.R. Pearkes for Children Divorce Lifeline Seniors Services Silver Threads Meals on Wheels Big Brothers and Big Sisters

Hospice Society
 Canadian National Institute for the Blind
 Family Violence Prevention Society
 Arthritis Society
 Single Parent Resource Centre
 AIDS education, counselling
 St. Vincent de Paul Society

Western Institute for the Deaf and Hard of Hearing
 Intercultural Association
 Need Crisis and Information Line
 Epilepsy/Parkinsons Association
 Parents in Crisis
 Friends of Schizophrenics
 Native Friendship Centre

These are just some of the Agencies and Programs funded by the

UNITED WAY.

91% of all donated monies are distributed. Only 9% goes to campaign and administrative costs.

The SALT SPRING COMMUNITY CENTRE receives United Way funding and offers the following programs to this community:

- *Crisis Counselling
- *Food Bank
- *Santa's Workshop
- *Job File
- *Counselling for children and families
- *The G.I.P.S.Y. Program
- *Alcohol and Drug Abuse Program
- *Mental Health Nurse
- *Achievement Centre and residence for handicapped adults
- *Counselling for victims of abuse, depression, grief
- *Mutual support groups
- *Peer Counselling
- *Co-op Pre-school
- *Family law mediation
- *Recycling Depot

In 1989, the Society received \$35,000 from United Way and has a commitment for \$38,500 for 1990. The Community has never raised as much as it's received back. The goal this year is \$25,000, donated by Salt Spring Islanders.

The United Way Campaign for donations is underway. If you wish your donation to be earmarked for Salt Spring Island, please make note on the envelope or cheque.

ISLANDERS HELPING ISLANDERS!

The folks at Gulf Islands Realty Ltd. invite you to drop by, renew acquaintances and see their newly renovated home at 162 Fulford Ganges Road.



Donna Regen



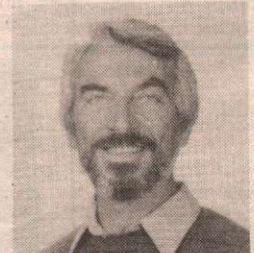
Henri Procter



Lynn Scotton



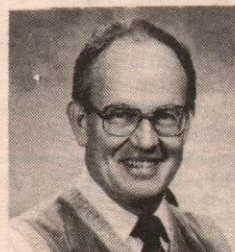
Linda Stafford
Secretary



Toni Holmes
(Agent)



Santy Fuoco



David Duke



Peter Lamb

GULF ISLANDS REALTY LTD.

P.O. Box 750, Ganges, B.C. V0S 1E0 PHONE (604) 537-5577