



Driftwood

Island Living Real Estate



Betty Boyd revels in the joyous side of teaching

Anyone who has been involved in tennis on Salt Spring Island in recent years will already know much about Betty Boyd.

By GAIL SJUBERG
Driftwood Staff Writer

Boyd teaches tennis on a volunteer basis to anyone of any age wanting to play the game and co-ordinates the junior players program on the island. Her compensation for the time and effort she puts into the game is the joy that comes from

playing and being with the children and adults who are learning with her.

Her aim is not to produce championship calibre tennis players, but to "guide" people in their playing. "I hate to give it a reason," she says, "it is just such a joy to me."

Boyd moved to Salt Spring three years ago, based on the good feeling she had from visiting the island. Ideally, she wanted to write. She did not intend to re-immers her life in tennis.

However, Boyd has found Salt Spring and the local tennis association to be "a healthy environment" for involvement in the game. The positive attitudes of children, adults and parents playing tennis at Portlock Park have put a lot of joy on the courts, she says. It is especially pleasing for her to see the children and their parents — all of whom she has taught — go on to play together.

She "loathes the elitism" displayed at tennis clubs in other centres.

Boyd played competitive tennis as a youth in California and coached players in four Ontario communities for a total of 24 years. She also worked as a graduate student lab instructor at the University of California, a teacher and consultant for the Ontario Ministry of Education, and raised a family of four.

Through her experience as a public school teacher and as a tennis coach, Boyd observed many children in the learning process. In teaching math, science, foods and nutrition, mainly to 12- to 15-year-olds, she found they gained most from actually doing what they were trying to learn — rather than focusing on the memorization and reiteration of the principles and facts. While she believes grasping the principles is important, she feels this can best be achieved when students are actively involved in doing them.

Boyd walked many miles on the path of academic study trying to dissect the process of learning and accomplishment. She says with some incredulity that she took 14 doctorate-level courses in the area of educational theory, perhaps believing like many people that comprehensive study would provide the answers she sought.

She eventually realized the best thing she could do would be to return to working with the kids themselves.

In 1972, Boyd published a book called

Thinking About Inquiry, which examined alternative and more effective ways of learning for students.

Boyd feels she was "on the right track" when she wrote the educational guidebook, but has in the last 10 years seen her ideas evolve further. She now sees the essence of any activity as "being completely there and doing your best moment by moment with whatever you are doing."

She says people instinctively know when they are "doing their best" and this cannot be measured in an objective way. It is important that any teacher respect "the particular case" — an individual and his or her specific activity at a certain time, she adds.

In transferring our knowledge to someone else, Boyd says we must be aware that using what we believe are the "right" words will not assure understanding or result in perfect action. She attributes this idea to the philosopher Wittgenstein who said "words have meaning only in the flow of life."

In teaching tennis she might suggest to a young player that he "swing at the ball sooner," but as she says, the word "sooner" can mean so many different things to different people. It is only through trying to swing in a variety of ways that a player will learn what works best for him.

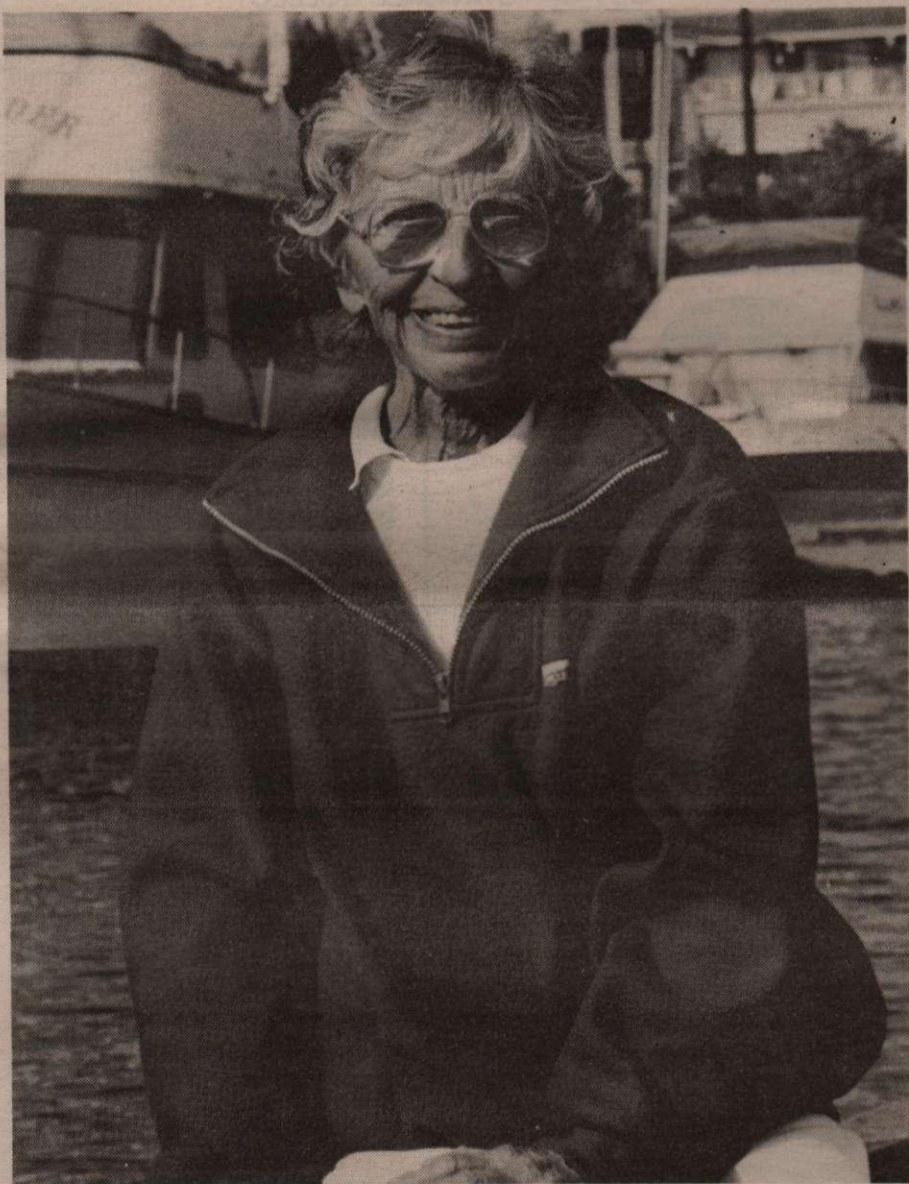
She notes humans have a tendency to find and articulate "reasons for intelligent action," in order to justify why one result was better than another. She adds that "just because we don't know exactly what the end result will be, it doesn't mean we are not acting intelligently."

She says "there is no doubt in my mind that anyone who wants to do something better can do it. You might not be a first class champion but if you want to do it, go for it."

The Salt Spring Island Tennis Association decided last week to recognize Betty Boyd's contribution to tennis on the island by creating a fund in her name. All monies in the fund will go toward developing the skills and participation of junior tennis players.

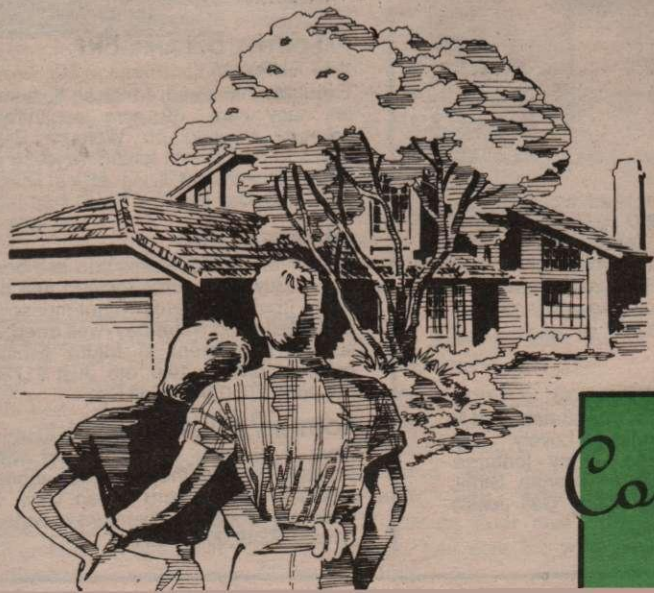
Boyd agrees with the goals of the fund, without feeling a need for official recognition. She is amply rewarded by the opportunity to play and teach tennis on Salt Spring.

"I feel so lucky to be doing this," she says.



Salt Spring's Betty Boyd

Driftwood photo by Gail Sjuberg



Your weekly guide to
GULF ISLANDS PROPERTIES

Compliments of:



ISLANDS

Road queries confuse the numbering system

Mayne Island Improvement District director Vince Billstem and committee head Harry Lane are wondering where Waugh Road begins and ends.

The two are working to solve Mayne Island's house-numbering system, introduced to augment the 911 emergency phone number.

According to Lane, Waugh Road officially begins at the Springwater at Miner's Bay (the B.C. Telephone Office is reportedly located on Waugh Road) despite the fact it is generally assumed it's on Georgina Point Road.

"Waugh Road," according to Lane, "is believed to extend from the corner of Georgina Point Road to Porter Road, from where it then becomes Campbell Bay Road."

All of which makes it very confusing to Lane who claims numbers on Waugh

Road suddenly jump from the 200 range to the 500 range and there are no signs posted indicating where Waugh Road ends and Campbell Bay Road begins.

"It's okay for people who know their way around the island," Lane states, "but it's extremely difficult for those unfamiliar with Mayne."

Lane also points out islanders are still posting their address numbers on utility poles, creating a hazard to the lines. Other problems have arisen when owners of corner properties have posted their address numbers on the east-west bordering road, rather than the north-west, or vice versa, creating time confusion in locating them.

"Generally speaking islanders are cooperating very well with the re-numbering campaign," Lane reports.

Canadian Crossword

By Rick McConnell

ACROSS

- 1. Small amount
- 4. Cdn. movie Co.
- 7. Test type
- 11. Fave cookie
- 13. Wing
- 14. Bowling or passing
- 15. Aqualung?
- 16. Water in Wacouna
- 17. Metric prefix
- 18. Sask. town with man's & woman's name
- 20. Got bigger
- 22. Before
- 24. Horse's headgear
- 28. Groomer town between Cal.

& Edm.

- 32. Use
- 33. Sickneses
- 34. Corrida cry
- 36. Ms. Fitzgerald
- 37. Sits with
- 39. Fraser Valley town with a purpose
- 41. Humans
- 43. Goose-egg
- 44. Courtroom cry
- 46. Alta. com town
- 50. New Zealander
- 53. Scarlet
- 55. Karate form
- 56. Ireland
- 57. Anger
- 58. Makes a mistake
- 59. Trade body

(abbr.)

- 60. Long time
 - 61. Agent
- DOWN**
- 1. Party type
 - 2. Seed cover
 - 3. Sandwich shop
 - 4. Born
 - 5. Emblem
 - 6. Filler
 - 7. Water south of Moose Jaw
 - 8. Ont.'s Opposition leader Bob
 - 9. Mandela's group
 - 10. Island souvenir
 - 12. Nob near Natashquan
 - 19. Appendage
 - 21. Age

- 23. African
- 25. Salvador
- 26. Inventory abbr.
- 27. Dash
- 28. Flaccid
- 29. Sheltered
- 30. Nile queen, for short
- 31. Shade tree
- 35. German article
- 38. Foxy
- 40. Make a lap
- 42. Strange
- 45. Goose-egg
- 47. Golf Pro Dave
- 48. To be in Taibi Lake
- 49. File style
- 50. Party improver
- 51. US RRSP
- 52. Intelligence
- 54. Study

Crossword solution found on Page C10

1	2	3	4	5	6	7	8	9	10
11		12	13			14			
15			16			17			
18			19	20		21			
22	23	24				25	26	27	
28	29	30		31	32				
33			34		35	36			
37			38	39		40			
41			42	43					
44			45	46		47	48	49	
50	51	52		53	54	55			

STEWART SCOTVOLD HOLDINGS LTD.



RESIDENTIAL CONSTRUCTION

With a Project Management approach

RODNEY H. SCOTVOLD, P.ENG., M.B.A.
P.O. BOX 932, GANGES, B.C. V0S 1E0
(604) 537-2344 FAX (604) 537-4243

**Moving to or from the Gulf Islands...
USE A PROFESSIONAL!**



NORTHWEST TRANSPORT LTD.

(604) 537-4839 GANGES
OUT OF TOWN CALL COLLECT



What's your Home worth?



PASTORAL SETTING
Adjoining large farms, 3 bedroom character home on 1.59 acres, piped water, quiet road. \$139,000. Call Jessie.

OPPORTUNITY! POTENTIAL!
Large lakefront resort. Lots of room for expansion. Provides ideal living with income. Call Jessie to discuss business possibilities.

ACREAGES
For investment and development. Ganges - 12.5 acres, sewer and piped water; Fulford - 8.27 level acres, creek, pond. \$450,000 and \$175,000. Call Jessie.



NEW LISTING
3 br home on quiet road, close to town & golf course, 1800 sq.ft. living space in mint condition. Indoor garage 16 x 20 and special hobby or home occupation room 10 x 20. Landscaped lot. Quality finishing and appliances. A best buy at \$162,500. Call Jessie.

PRIVATE ISLANDS
Group of two 240 acre & 3 acre, not to be sold separately. Lovely bay, protected moorage. Many features. Located in southern Georgia Strait. \$1.M - terms negotiable. Call Jessie for complete info.



DUCK BAY OCEANFRONT
Lovely .63 acre oceanfront lot located near the head of the bay. Beautifully treed, level lot with good ocean views. Summer moorage for the boater, exceptional opportunity to design and build your Island Oceanfront home. Fully serviced - Value \$179,500. Call Ed.



SEA FOREVER
Outstanding high bank oceanfront lot with newly renovated small cottage. Ideal for weekend retreat, or comfortable living quarters while you build your Island home. South & west exposure, View, View, View. Act quickly! \$169,500. Call Ed.



EXECUTIVE OCEANFRONT, WELBURY BAY
Exquisitely finished 4,080 sq.ft. home on easy care .69 acre oceanfront property fronting on Welbury Bay. Steps to beach with foreshore lease in place. Oceanfront living at it's finest. \$750,000. Call Ed.

PRIVATE ISLAND
Islands are Hot! and this one is a best Value Buy! 200 acres located just off shore from Port Hardy. Giant mussels, protected deep water bay, well treed, a superb investment in future fishing grounds, diving camp, etc. Just \$1750 per acre. \$350,000. Call Ed.

SOUTHEY BAY OCEANFRONT
Rare 1.19 acre oceanfront lot with frontage on Southey Bay. Seasonal moorage with superb ocean view. 2 bedroom cottage, community water, private. \$249,000. Call Ed.

ISLANDS

Elaine Campbell of Mayne was among the 48 Vancouver General nurses out of a class of 69 on hand for a 40th reunion.

Former classmates from as far away as Honolulu and Texas attended. Campbell points out that the final nursing class at the General is presently completing its practicum at the hospital. In the future, with the Vancouver General's School of Nursing closing, all nurses' in training will receive their education at UBC.

By CHRIS STEWART
Driftwood Correspondent

Campbell, whose nursing career took her to Santa Barbara, Chicago, Oregon, Sarnia and Montreal, spent 35 years as a public health nurse, four years with the VON and 19 years in administrative positions.

Search resumes

The search is on again for a suitable site for senior citizen's housing, hopefully in the Miner's Bay area.

The search resumed when the Community Association voted to forfeit their option on a 10-acre site on Merryman Drive in Village Bay in favour of accepting an interest-free \$70,000 five-year loan, offered by Michael Schiega. Provisions of the deal forced them to relinquish their interest in the Merryman Drive property.

Association chairman Ev Mackay says, "If someone donated some land for

MAYNE ISLAND Scene

this project we would probably have an application in to the government by January 1."

The only alternative, he concludes, is to continue the hunt for lower-priced land. The committee has been searching for a suitable site for the past 18 months.

Community Association executive

McKay has been returned as Community Association president. Judy Taylor and John Coates have been named vice presidents; Lorna Kirby, secretary; Nina Thompson, treasurer.

Executive members at large include Paula Buchholz, Fred Warman and John Rainsford. Directors are McKay, Taylor, Buchholz, Coates and Warman.

Upcoming sale

Quality used clothing will be offered at greatly reduced prices at the upcoming

"Used Garments Sale" sponsored by the W.A. of St. Mary Magdalene church on October 20.

Members emphasize that only top-notch clothing will be featured for sale in this "first-of-its-kind" used clothing sale sponsored by the women's group.



160 Acres - 1/4 section of land, subdividable, south end, Salt Spring Island.

Call Arvid Chalmers
537-2182



PEMBERTON HOLMES
(GULF ISLANDS) LTD.

537-5568
P.O. Box 929, Ganges, B.C.
156 Fullford-Ganges Road
Victoria Direct Line 533-9225 Fax 533-9225

FIVE STAR MOVING

Your local Moving Co.

537-9501

Fully licenced & Insured
Professional, Reliable Service

Randy Severn,
Gordon Lee



BUSINESS OPPORTUNITIES

SHADY WILLOWS RESORT

\$490,000 EXCLUSIVE

popular Gulf Islands resort
2-1/2 acre lakefront property
36 RV sites, 5 rental cottages
owners residence - 17 tent spaces
docks, BBQ pits, office, workshop
easy access from main road

Call Maggie Smith
537-2913

ITALIAN RESTAURANT

\$75,000 MLS

- licensed dining room plus
- outdoor patio
- long term lease available
- room for expansion
- adjacent to new Arts Centre
- Call Arvid Chalmers
- 537-2182

EXCELLENT LOCATION! GANGES

\$51,900-LOCK, STOCK & BARREL

- you don't have to be a butcher to run a meat store
- growing business has great potential for hard worker
- Call Carol Fowles today!
- 537-5993

ONE OF A KIND - CAR WASH

\$35,000 MLS

- excellent opportunity-be the boss
- only carwash on the island
- good lease-great location
- detailing & polishing
- power wash equipment included
- view by appt. only please
- Call Maggie Smith
- 537-2913

GIFT SHOP - CHOICE AREA

\$25,000 MLS

- established clientele
- good tourist business
- Dennis Parker Sheep Shirts
- stock extra
- Call Phyllis Fetherston
- 537-2095

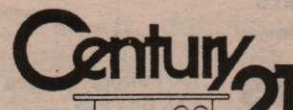
ARTS & CRAFTS SUPPLIES

\$24,000 MLS

- price includes stock fixtures
- excellent growth potential
- located in the heart of artistic Ganges Village
- Call Arvid Chalmers
- 537-2182



1101
GRACE POINT
SQUARE
P.O. Box 454
Ganges, B.C.
V0S 1E0

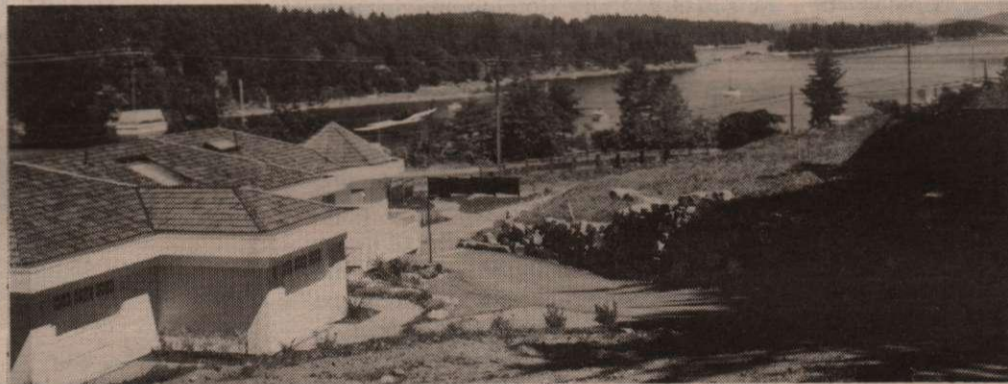


THE LARGEST
REAL ESTATE
ORGANIZATION
IN THE WORLD
EACH OFFICE IS
INDEPENDENTLY
OWNED AND
OPERATED



Kingfisher

INVITATION TO A FREE SPIRITED LIFESTYLE



You are welcomed to our Saturday and Sunday Open House from one to four. Open House hours: Mon. - Fri., eleven to three, or call 537-9981 now for an appointment to view at your convenience.

- Sunshine and sparkling seaviews.
- Best Island value — quality construction, quality finishing, quality floor plans with bright spacious sensations.
- No care, landscaped grounds.
- Conveniently located within a five minute walk of the amenities of Ganges Village.
- 10.75% financing available.

\$169,500 to \$195,000

ISLANDS

GALIANO ISLAND *Scene*

Families holidaying at North Galiano's Salishan Resort have always booked a year ahead for their "week by the sea."

By ALISTAIR ROSS
Driftwood Correspondent

The same families tended to come back year after year. Some couples who first came with their youngsters in the 1960s were here in 1990, as always enjoying the natural setting, but now with their married children and grandchildren. Former CBC broadcaster Tom Robinson of Vancouver and his wife, Jacqueline, have spent 24 summers at Salishan. Several other families have been 20 or more times.

This year was to be their last, however, as Bill Stafford, who began the resort with his sister Jackie in 1957, thinks it's time to retire. The Staffords — Bill and Phyllis — have operated their four-cabin resort from May until October each year, largely without outside help.

In retirement, Bill will have more time for fishing, travel and photography, plus star-gazing activities with his telescopes. Phyllis will have more time for her golf, her knitting and handicrafts and her community work.

Together with the Robinsons, Salishan's other longtime summer residents received the news of Salishan's closing with sorrow but with understanding. Nostalgic memories of happy times in a forested setting with the sea at their doorstep, of glorious sunsets viewed from the point by Turtle Rock, of sun, and wind and starry skies — these are the things they will not soon forget.

Leaving the island

Peter and Marjorie Denroche of Whaler Bay, moved to Campbell River recently. Ill for some months, Peter was taken to Saanich Municipal Hospital several weeks ago and has now been moved for care to Campbell River. His wife Marjorie left Galiano last week to live in the north island city where she can visit Peter and be near their son Brea and his wife and family.

The Denroches are longtime residents of Galiano, Peter having come to the island from Ireland with his parents when he was a youngster. He and his brother Dennis went to school on Galiano. The Denroche family operated a popular summer resort on Gossip Island during the 1920s and 30s. For 20-plus years Peter was "Mr. School Bus" to Galiano children. They remember him with respect and fondness.

Fireman retires

North Galiano fireman Evan Hughes

retired from active participation in the North Galiano volunteer fire department recently. Hughes, one of the volunteers who joined the department when it was re-organized in 1981, is one of the last to remain active. His commitment to the volunteer fire department and his faithful attendance at practices was appreciated by fire chief Ted Waterman, as by his predecessor Tom Liddell.

The community has benefitted much from Hughes' years of care and concern, as it has from his wife Pat's active participation. Evan Hughes' name will soon be added to the plaque in the Number One North Galiano firehall. The plaque honours those who have given service to the volunteer fire department over the years.

Coming events

- Saturday, October 13 — the North Galiano fire auxiliary's Oktoberfest, North Hall, 5:30 p.m. Happy Hour, 6:30 p.m. supper. Tickets — Joan Newstead, 539-5344.

- Friday to Monday, October 12 to 14 — a weekend showing of the work of watercolour artist Flemming Jorgensen at the Dandelion Gallery. Friday 6 to 9 p.m., Saturday and Sunday 10 a.m. to 4 p.m.

- Wednesday, October 17, 7:30 p.m., North Hall — Capital Regional Director Vern Roddick will be present at a meeting organized to discuss the possible formation of a parks and recreation committee for the island. Contact the writer 539-2294 for further information.

- Saturday and Sunday, October 20 and 21, South Hall — Watercolour workshop by Flemming Jorgensen of the University of Victoria. This program arranged through the Continuing Education branch. Phone Kendal Kyle, 539-2289.

- Wednesday, October 23 — the Dart Group resumes its winter season at the North Hall on Wednesday evenings, 7:30 p.m. A fun evening — all are welcome. Phone Al Chambers 539-2955 for details.

- Thursday, October 25, 7:30 p.m., North Galiano Hall — a concert of music for flute and guitar by Mary Reher and Brad Prevedoros. Tickets at \$8 can be purchased at local stores. The concert is available to Galiano residents through the current Elderhostel program as arranged by Barbara Moore.

- Sunday, October 28, 2 p.m. — the North Galiano Community Association's pumpkin carving party. This fun event is for adults and children. Bring a pumpkin, a carving instrument, and lots of ideas and carve your pumpkin for Hallowe'en. Juice and cookies for the children, pumpkin pie and coffee for the adults. Phone Dorothy Ross at 539-2294 for further details.

Mayne Island commuters fear pending boat switch

Mayne Islanders can expect to be left in the lurch after mid-October — that is if they're expecting to catch the morning boat for Swartz Bay.

This is the time when ferry car space will be reduced from 130 to 75 spaces as the *Mayne Queen* replaces the *Queen of Tsawwassen*.

Barry Wilks, head of the Community Chamber's Transportation Committee, said a similar switch last November resulted in numerous overloads with islanders being left behind.

He fears introducing the smaller ferry even earlier this year can only compound the problem. He reports numerous cars were left behind at Village Bay on the 5:30 p.m. sailing last Sunday when a number of unscheduled transfers from Saturna made it virtually impossible to accommodate Mayne Islanders on this run.

Sailing from Mayne to Tsawwassen

will also be reduced in mid-October, Wilks reports, when the 130-car *Queen of Tsawwassen* replaces the 192-car *Queen of Nanaimo*.

"The Island's representatives have made their objections known," Wilks reports. "We will be meeting again with ferry officials on October 17, but as yet I see no relief in sight. More people with more cars are continuing to come to the islands, and the problem is only mounting."

Wilks predicts that even with the new ferries expected to go into service next summer, "they won't even catch up to the system." He reports two smaller ferries, readied for next summer, might possibly be used on the southern islands' route.

Another ferry is being purchased in Norway and still another will be raised next spring, but the completion of the two large ferries is still over two years' away.

My personal guarantee...

- A realistic market evaluation of your property.
- The highest level of client service.



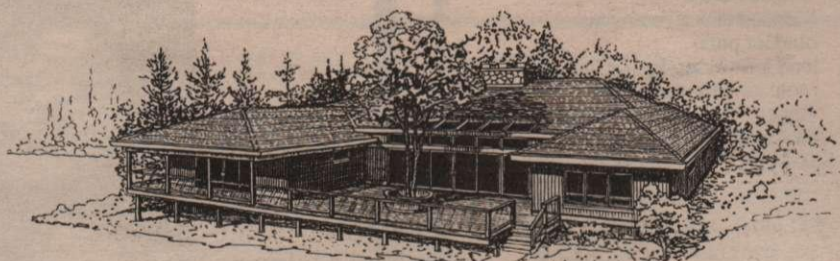
ISLANDS REALTY LTD.
1101 Grace Point Square, P.O. Box 454
Ganges, B.C. V0S 1E0

CALL
PAT JACQUEST
SALT SPRING ISLAND SPECIALIST

Bus. 537-9981
Res. 537-5650
Pager 388-6275
#2339



Your Home . . . a valuable asset!



Planning and building your Dream Home can be a happy experience but there can be disappointment if it doesn't turn out quite as visualized. This is often caused by sketchy plans, because even the best Builder can't read your mind. We combine our ideas and experience with your wishes and produce very specific plans at reasonable cost. That's Dream Insurance!

We'll be happy to discuss your plans without obligation.

Call **BILL MONAHAN THE OMEGA DESIGN TEAM**
SALTSRING ISLAND



P.O. BOX 63 GANGES B.C. V0S 1E0 PHONE 537 4290

HOMES "OF & FOR" THE FUTURE!! ROSCOMMON PATIO TOWN HOMES



- built in vacuum system and equipment
- optional Med-Alert and Land Security System
- lg. garage/workshop/storage/auto-door
- near Ganges village centre, hospital and golf course
- Ganges harbour views
- comfortable, functional designs
- clad in B.C. cedar siding
- professionally landscaped
- stove, refrigerator, dishwasher, washer, dryer

OPEN HOUSE SAT. & SUN 1 p.m. - 4 p.m.

\$134,000 TO \$163,000 MLS

Ann Foerster or Wynne Davies



PEMBERTON-HOLMES

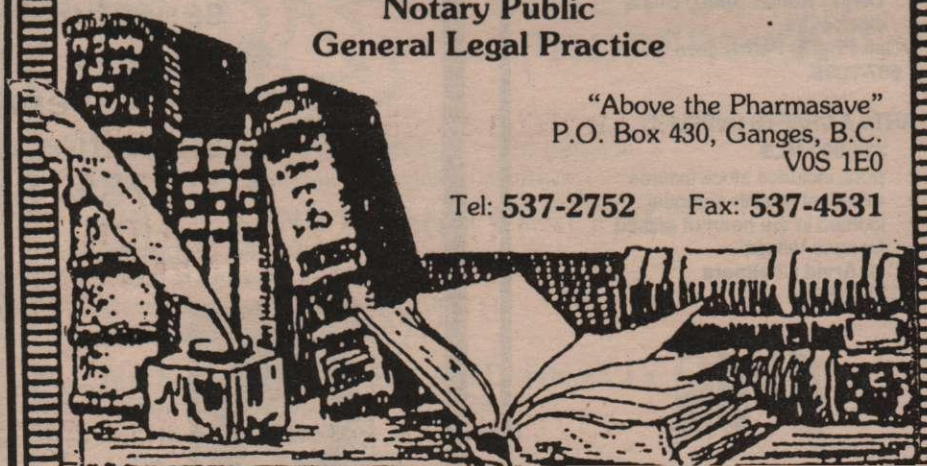
156 Fullford-Ganges Rd.
P.O. Box 929

JONATHAN L. OLDROYD

Barrister & Solicitor
Notary Public
General Legal Practice

"Above the Pharmasave"
P.O. Box 430, Ganges, B.C.
V0S 1E0

Tel: 537-2752 Fax: 537-4531





SALT SPRING HEAD OFFICE
 537-9981
 537-9551 (FAX)

GALIANO ISLAND
 539-2002 (Res & FAX)

MAYNE ISLAND
 539-5527 (Res)
 278-1388 (Pager #5073)

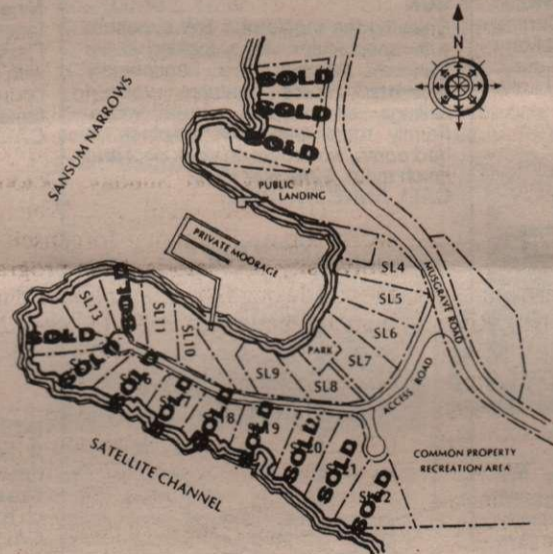
PENDER ISLAND
 629-6417 (Res) 629-6494 (Res)
 629-3366 (FAX)
 655-3411 (Toll Free from Victoria)

SATURNA ISLAND
 539-2121 (Res)
 253-7596 (Pager #2121)

Selected Properties

THIS WEEK'S FEATURED GULF ISLANDS LISTINGS

MUSGRAVE LANDING OCEAN ESTATES



MUSGRAVE LANDING OCEAN ESTATES

These serviced waterfront lots are located at Musgrave Landing on the west side of Salt Spring Island. Access is by road, only 35 minutes from the Fulford Harbour area. This area of the island is undeveloped and appeals to those seeking a peaceful surrounding of natural beauty. Old logging roads provide miles of hiking and the opportunity to observe wildlife such as deer, grouse, raccoons, otter, wild sheep, eagles and other animals. Sansum Narrows has long been known as a first rate salmon fishing area. This is one of the best locations one could ask for in terms of cruising and sailing because of its spectacular scenery and protected waters. A marina, which is part of the development, provides safe year-round moorage for property owners.

PRICES START AT \$69,800

<u>LOT</u>	<u>SIZE</u>	<u>PRICE</u>
4	.58	\$ 81,300
5	.64	\$ 74,600
6	.61	\$ 76,700
7	.68	\$ 74,600
8	.48	\$ 74,600
9	.50	\$ 80,100
10	.49	\$ 81,300
11	.46	\$ 69,800
13	.46	\$ 145,000

LOTS 14-22 SOLD

CALL ABOUT 12% VENDOR FINANCING.

**FOR FURTHER INFORMATION
 CONTACT LISTING AGENT
 BRIAN BETTS**

Office 537-9981 or Residence 537-5876



SALT SPRING ISLAND OFFICE

1101 GRACE POINT SQUARE
P.O. BOX 454
GANGES, B.C. V0S 1E0
537-9551 (FAX)



BUYING OR SELLING, CALL US F

537-9981

THE LARGEST REAL ESTATE ORGANIZATION IN THE WORLD. EACH OFFICE IS INDEPENDENTLY OWNED AND OPERATED.

® and ™ Trademarks of Century 21 Real Estate Corporation.



ARTHUR GALE
Sales Rep.
537-5618



SYLVIA GALE
Sales Rep.
537-5618



SARA FEE
Sales Rep.
537-4536



EILEEN LARSEN
Sales Rep.
537-5067



BECKY LEGG
Sales Rep.
537-5870



BRIAN BETTS
Sales Rep.
537-5876



JANET MARSHALL
Sales Rep.
537-5359



PAT JACQUEST
Sales Rep.
537-5650



GARY GREICO
Sales Rep.
537-2086

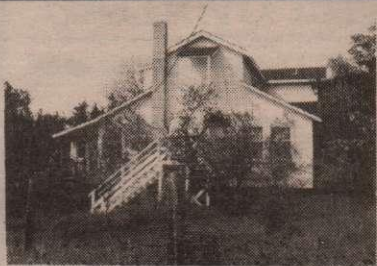


DARLENE O'DONNELL
Sales Rep.
653-4386



FINN RONNE
Sales Rep.
537-579

SALT SPRING ISLAND PROPERTIES



ROOMY HERITAGE HOME
Roomy 5 bedroom, 2 bathroom classic home on sunny 5.29 acres. Central location close to golf, tennis, St. Mary Lake and ocean beaches. Organic garden, spring water and St. Mary Lake view. Rare! \$289,000 MLS. CALL JANET MARSHALL



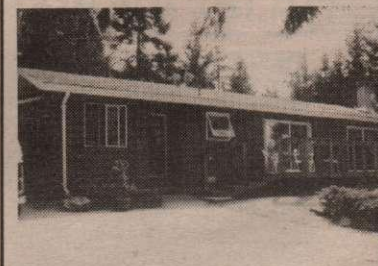
OCEAN VIEWS SPARKLING IN THE SUN
Enjoying the magic of a SW exposure with spectacular views looking down Sansum Narrows, this handsomely appointed home features vaulted ceilings, beams and natural wood. Family room with rock fireplace, 3 bedrooms, workroom, in deck pool and much more. \$249,900 MLS. CALL ANNE WATSON



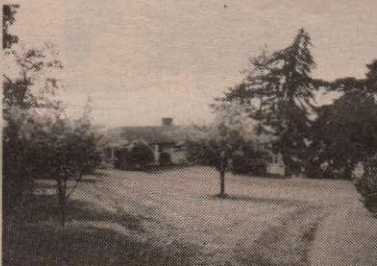
EXCEPTIONAL HOBBY FARM
Nine acres with approx. seven acres in fenced and cross fenced pasture. Remainder in old orchard and woods with huge firs and maples. Small older home and outbuildings included with fantastic views. \$170,000 MLS. CALL AILSA PEARSE



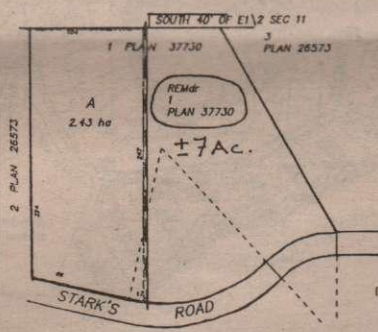
"WANT TO BE IN THE SWIM"
Step from your terraced lawn to Booth Canal beach. Tidal waterfront but deeper pools remain even at low tide. Just renovated and painted Alpine-style 2 bedroom cottage. Private 3.68 acres. \$159,900. CALL GARY GREICO



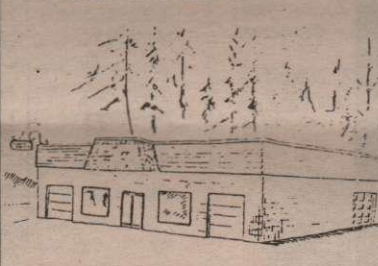
LIVING IS EASY!
Close to St. Mary Lake. Enjoy recreation. Spacious one level home in sunny private setting, 2 bedrooms, large family room, stone fireplace. \$115,000 LS. CALL FELICITY ANNE GRANT



PARKLIKE LOWBANK WATERFRONT ACREAGE
Enjoying the grace of privacy, this magnificent nine acre lowbank waterfront property with approximately nine hundred feet of shoreline enjoys ever changing seascapes and sunsets. The house was architecturally designed in 1945. The property has the potential to be subdivided. LIST PRICE \$750,000 MLS. CALL ANNE WATSON/EILEEN LARSEN



WONDERFUL WOODED ACREAGE
Newly created parcel with easy access off a quiet country road. Heavily treed, partly fenced, good arable potential. Close to lake, golf, tennis. Offered subject to registration. \$69,000 New MLS. CALL ARTHUR OR SYLVIA GALE



INDUSTRIALLY ZONED
A building that shows an excellent return. Fully rented. Try your offer. Great potential for expanding. Situated on half an acre. Asking \$250,000 MLS. CALL PETER BARDON



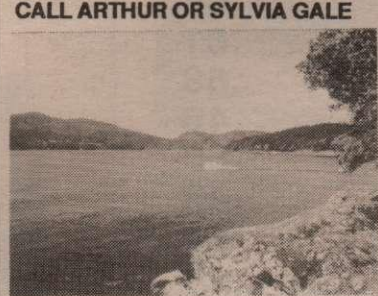
DESIRABLE OFFICE SPACE
455 sq.ft. just upstairs from KIS Office Services. Also 155 sq.ft. available. Vaulted ceilings, spacious decks and generous parking, plus extraordinary design features make this the ideal location for your professional business. MLS. CALL BEV JOSEPHSON



SUN LOVER'S PARADISE!
West coast contemporary open living design home on 2.40 acres. Unique woodwork and finishing throughout. 1500 sq.ft. of new sundecks. Sunny southwest exposure. Ideal for artist retreat. Expansive mountain views. \$139,900. CALL FINN RONNE



FASCINATING VIEWS!!
Savour the outstanding views of the islands, ocean, and mountains beyond. This contemporary small home offers many features for a weekend escape or a permanent residence. 2 sunny acres in an area close to Ganges. \$144,000 MLS. CALL PAT JACQUEST



SPECTACULAR VIEWS
One of the finest waterfront strata lots at Musgrave Landing. Ten minute boat trip from Vancouver Island or drive in. Located on the tip of Musgrave Point. Marina for the exclusive use of property owners. \$145,000 MLS. CALL BRIAN BETTS



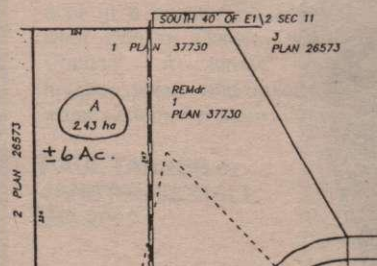
GREAT RENTAL OR INVESTMENT PROPERTY
This property offers two bedroom mobile with attractive addition located on a beautifully landscaped acre of sunny quiet living. Excellent rental or investment potential. \$91,000 MLS. CALL TOM PRINGLE



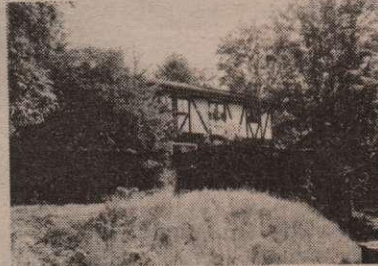
CASTLE HUNTING?
Luxury waterfront townhome at exclusive Grace Point. Southern exposure, sun filled decks, well designed layout and exceptional architectural features. Private moorage available at your doorstep. \$325,000 MLS. CALL PAUL TANNER



WALK TO THE FERRY
This ocean view home is packed with features such as hot tub with a view, heat pump, solar heat storage, huge sun decks, wet bar rock garden, paved driveway, and minutes walk from Fulford ferry. Call now. \$249,000 MLS. CALL BRIAN BETTS



VERY PRIVATE ACREAGE



WONDERFUL BED & BREAKFAST POTENTIAL
With this 6 bedroom, 3 bathroom home! The property has a self-contained 1 bedroom guest

THEY DON'T MAKE 'EM LIKE THIS ANYMORE!
Beautifully cared for older home with outstanding seaviews sited on 2.5 acres of spectacular gardens, orchard and wood. All the luxury of today combined with yesteryear's charm. \$325,000 MLS. CALL PAUL TANNER



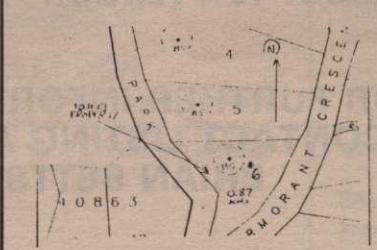
ROOM FOR THE ENTIRE FAMILY AT CHRISTMAS
2.97 acres of trees and gardens all



RENTAL COTTAGE DEVELOPMENT
Four cottages all with seaviews, fridge, stove, washer and dryer. Good investment opportunity. Great location near ocean, store and school. \$159,000 MLS. CALL BEV JOSEPHSON



TRANQUIL GROVE!!
Tucked away privately on a pretty 2+ acres of sun filled woods, this well cared for 3 br home has a full basement with development started. Fantastic separate workshop is perfect for the craftsman. \$149,000 MLS. CALL PAT JACQUEST



CHANNEL RIDGE LOT
Ready to build on ocean view property at the top of Channel Ridge Water



FRESH EGGS EVERY DAY!
The chickens come with this peaceful

No one covers the Gulf Islands like we do.

Century 21

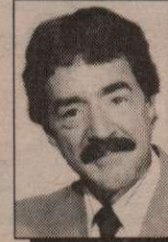
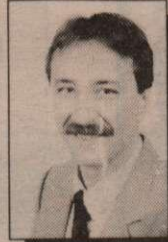
ISLANDS REALTY LTD.



PRE-APPROVED MORTGAGES THROUGH



LISTINGS ADVERTISED DAILY ON



ANNE WATSON
Sales Rep.
537-2284

BEV JOSEPHSON
Sales Rep.
537-2532

GEORGE PUHARICH
Sales Rep.
537-9111

AILSA PEARSE
Sales Rep.
537-9261

PETER W. BARDON
Sales Rep.
653-4576

FELICITY GRANT
Sales Rep.
537-2374

PAUL TANNER
Sales Rep.
537-4509

TOM PRINGLE
Sales Rep.
537-9996

MARY SMALL
Principal Agent
537-5176

TOM HOOVER
General Manager
537-5918

SALT SPRING ISLAND PROPERTIES



A BEACH FOR WANDERING
This 3.42 acre waterfront has a magnificent primary building site with a sensational cottage site as well. Super sun, beautiful trees and a beach for wandering. Make a great family purchase. \$220,000 MLS.
CALL ANNE WATSON



ACREAGE AND TWO DWELLINGS
Main house has vinyl siding, metal roof. Well maintained. Second residence single wide mobile with addition. Property is level and sunny, mature trees, mostly fenced. Apple orchard, fenced garden area, carports and storage sheds. \$179,900 MLS.
CALL BEV JOSEPHSON



WALLET WATCHER!
Light filled 3 bedroom home sited on a very sunny, usable .88 acre lot. Plenty of lawn and woods for kids to play. Conveniently located near Ganges, this is a great starter or revenue home. \$94,000 MLS.
CALL PAUL TANNER



MAYNE ISLAND INCREDIBLE VIEW
Over 10 acres of south facing land on east/west road, Mayne Island. Cleared building site with a super sunny exposure and views all the way to the Olympic Mountains. Water system and power plus shed. \$139,900 MLS.
CALL BRIAN BETTS



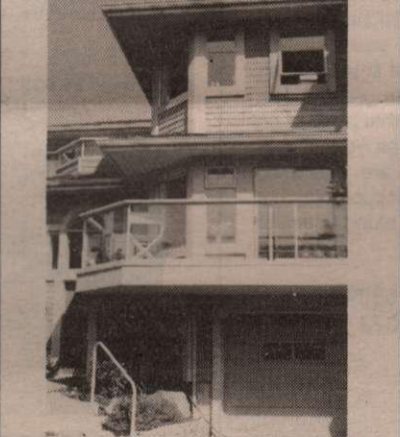
BEAUTIFULLY DESIGNED
And situated on 12.99 adventurous acres at the end of a quiet cul-de-sac. Two bedrooms. Great kitchen, living and dining rooms. The basement has room for development. Asking \$109,000.
CALL PETER BARDON



CUTE & COZY
Great recreational property with .71 ac., seaview, 2 room cabin, workshop, garage and outdoor shower. Site to build main dwelling. A must see! \$69,500 MLS.
CALL JANET B. MARSHALL



DEVELOPMENT POTENTIAL
Older character home situated downtown Ganges, has great development potential! Situated on two lots with two road accesses and surrounded by commercial zoning. Very strong development potential with rezoning. \$295,000 MLS.
CALL BECKY LEGG



IF WHERE YOU LIVE IS IMPORTANT
Grace Point Townhome, for the discriminating buyer, only steps to shopping and banks in Ganges Village. Eye pleasing with exceptional interior architectural features. Private moorage available. A rare one-of-a-kind offering on Salt Spring. \$295,000 MLS.
CALL GARY GREICO



SUN VIEW - PRIVACY
This picturesque 1.77 acres of very sunny property lies in a very unique setting. Very quiet private area on a cul-de-sac. Expansive ocean views + driveway into building site. \$75,000 MLS.
CALL FINN RONNE



SEAVIEWS & MEADOWS
Beautiful 48 acre property with double access Wright Rd. and Seymour Heights. Great farm and private park potential. Good grazing for animals. Offers to asking \$195,000 MLS.
CALL JANET B. MARSHALL

OCEAN VIEW - 100 HILLS AREA
Rare opportunity to own 5 acres plus 2 level, 3 bedroom home in one of Salt Spring's more popular areas. Large garden area, fruit trees, separate garage, paved driveway and community water. This is private and close to Ganges. \$175,000 MLS.
CALL BRIAN BETTS



FACING THE SEA
Situated on 5 acres. Very sound construction, 4 bedrooms, 2 bathrooms, plus den. Views to the water from the living and dining room. Asking \$175,000 MLS.
CALL PETER BARDON



5 ACRES OF COUNTRY LIVING!
Attractively treed with good garden potential and a sunny exposure. Driveway and building site in place. Minutes from the village, just off Mansell Rd. It won't last at \$55,000 MLS.
CALL PAT JACQUEST



SUNNY TWO BEDROOM HOME
In a quiet, sunny cul-de-sac on a pleasant .61 acre is this two bedroom home with daylight basement. Fruit trees, paved driveway, lots of deck area and carport are some of the features. Please call today for an appointment. Reduced \$110,000 MLS.
CALL ANNE WATSON

PRICED TO SELL!
3 bedroom on private 1.71 acres. New 12'X 30' cedar sundeck, over 1000 sq.ft. of living space, very sunny location, great for getaway or starter home. \$90,000.
CALL TOM PRINGLE



ESTATE SALE
Spacious country home situated on 10 south facing wooded acres. Unique features and quality craftsmanship throughout. Fruit trees, flowering shrubs, fenced vegetable garden, seasonal stream - a perfect family home or B & B. \$325,000 MLS.
CALL SYLVIA OR ARTHUR GALE



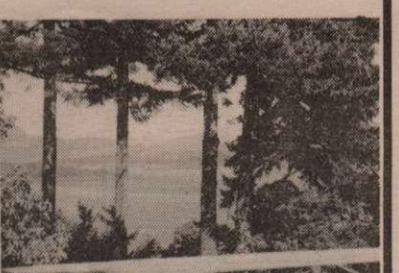
EVERCHANGING MARINE VIEWS!
Immaculate home on Scott Point Road. Spacious sundeck. Watch the seals play and yachts pass by. Well constructed dock, winch and ton lift. White clam shell beach. Good water from own well as an added bonus. \$355,000 MLS.
CALL SARA FEE



CASUAL OPULENCE!
Quality predominates in this spacious lakeview home near Ruckle Park. Light filled studio plus room for prof.



WHY PAY COMMERCIAL RENT?
When you can own! 800 sq.ft. home on .25 acre, already commercially zoned.



ENJOY THE SUNRISE
From deck, dining room, kitchen, living room or studio. Spacious 4 bdrm home with den and studio on 1.34 acres. Paved driveway, fenced garden, greenhouse and garage. Great location only five minutes from town. \$199,000 MLS.
CALL BEV JOSEPHSON



QUIET COUNTRY ROAD



RUSTIC WEST COAST CHARM ON LARGE PRIVATE ACREAGE
7.51 acre of country. Never finished.



MLS
MULTIPLE LISTING SERVICE
PRE-APPROVED MORTGAGES THROUGH
Metropolitan Trust
LISTINGS ADVERTISED DAILY ON
Rogers Cable TV

GALIANO ISLAND
539-2002 (Res & FAX)
MAYNE ISLAND
539-5527 (Res) 278-1388 (Pager #5073)
PENDER ISLAND
629-6417 (Res) 629-6494 (Res)
629-3366 (FAX)
655-3411 (Toll Free from Victoria)
SATURNA ISLAND
539-2121 (Res) 253-7596 (Pager #2121)
SALT SPRING HEAD OFFICE
537-9981 537-9551 (FAX)



ARDITH GARNER
Galiano Sales Rep.
539-2002



PAUL TANNER
Sales Rep.
539-2002



VIRGINIA MARR
Mayne Sales Rep.
539-5527



FLYNN MARR
Mayne Sales Rep.
539-5527



SUE FOOTE
Pender Sales Rep.
629-6417



JOHN FOOTE
Pender Sales Rep.
629-6417



ALEX FRASER
Pender Sales Rep.
629-6494



DON PIPER
Saturna Sales Rep.
539-2121

OUTER GULF ISLAND PROPERTIES

GALIANO ISLAND

SEMI-WATERFRONT LOT

Semi-waterfront 1.64 treed acres on Whaler Bay and Sturdies Bay Road. Close to stores and walking distance to the ferry. Court approval on offers. \$55,000 MLS.

PAUL TANNER or JANET MARSHALL
539-2002



HOW ABOUT THIS ONE?

\$150,000 MLS

- * 1.79 level acres
- * 3 bedroom home with ocean view
- * 2 bedroom cottage
- * fenced-in garden area
- * 2 plum trees
- * wood shed
- * chicken house

WHAT ELSE DO YOU NEED?

PAUL TANNER or JANET MARSHALL
539-2002



WISE ISLAND

\$45,000 MLS

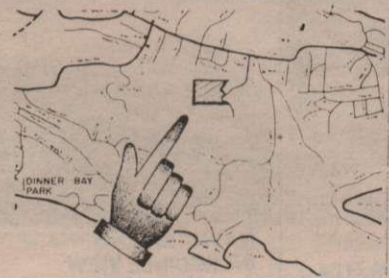
100 feet lowbank waterfront property. .42 of an acre in a boaters paradise! Located on the west side of Galiano Island in Trincomali Channel. A terrific holiday get-away. Imagine..peace and quiet! There is even a water spring. For more information, call...

PAUL TANNER or JANET MARSHALL
539-2002

\$45,000 MLS

.98 of an acre. Nicely wooded and a gentle slope. The beautiful arbutus and cedar trees give this property a peaceful "park-like" setting. Close to an ocean access and on a water...

MAYNE ISLAND



FOREST HOMESTEAD
\$160,000 MLS

This is an opportunity to have a true forest homestead in a marvellous island setting. Located in the center of Mayne Island this level ground is covered in second growth forest. Walk through this wonderland of fir and cedar, step over fallen trees covered in green moss, listen to the thousands of birds that abound on the property and imagine this as your home. These large island properties are becoming increasingly rare and this is an opportunity not to be missed. Its kind will not be along again for a long time if ever. Call...

VIRGINIA & FLYNN MARR 539-5527
Pager (24 hrs) 253-7596 #5073



OCEAN VIEW HILLSIDE
\$120,000 MLS

10 acres of incredible ocean views to south west and sweeping around to the north! This is forest land accessible by private road with hydro across the lot. Owner is anxious to sell immediately. This is an opportunity to own incredible view property. Make an offer! All reasonable offers will be considered. Call...

VIRGINIA & FLYNN MARR 539-5527
Pager (24 hrs) 253-7596 #5073

LOTS OF BUILDING LOTS

We have a large selection of excellent building lots available at prices starting as low as \$14,500. Large and secluded with a variety of features they offer a perfect entry to island life. Some are adjacent allowing the purchase of two or more for a larger holding and greater seclusion. Some are a great bargain with very eager vendors. And others are just plain nice! Let us send you your own complete catalogue, maps and other material on Mayne Island to...

PENDER ISLAND

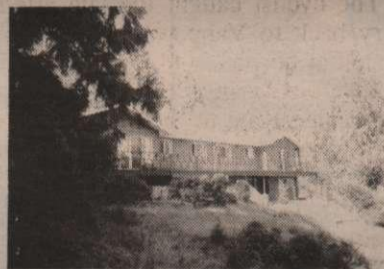


OCEAN VIEWS!!

\$139,000

...from this immaculate 2 bdrm, 2 bath home. Spacious living-dining room with heatilator fireplace (& lots of firewood!!), bright kitchen & full length sundeck. Call...

JOHN & SUE at 629-6417,
or 655-3411 toll free from Victoria



RARE OPPORTUNITY!!

\$159,000

...two separate units, side by side, each with a spacious living room, dining room, 2 bedrooms & 2 baths...and OCEAN & MOUNTAIN VIEWS, on 1.32 acre. Call...

JOHN & SUE at 629-6417,
or 655-3411 toll free from Victoria

ACRES OF ACRES!!

...FROM \$39,900

- 2 acre on community water \$39,900
- 2 acre ocean glimpses, road \$44,000
- 6 acre southern exposure \$55,000
- 15 acre ocean & valley view \$112,000
- 15 acre sunny, sub-dividable \$135,000

JOHN & SUE at 629-6417,
or 655-3411 toll free from Victoria

OCEAN VIEW

One of the few, cheap ocean view lots left on the market. Located on quiet cul-de-sac with easy access and municipal water. \$27,000 MLS.

ALEX FRASER at 629-6494

OCEAN & VALLEY VIEW

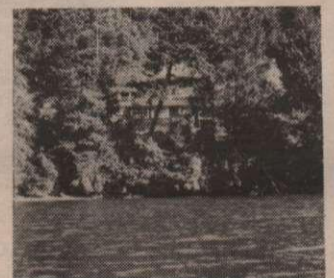
This ocean view lot offers a view of Browning Harbour, new driveway, municipal water and several house sites, all within walking distance of marina and stores. \$37,500.

ALEX FRASER
629-6494

COZY COTTAGE

Private log cottage on .98 acre with separate...

SATURNA ISLAND



BOOT COVE WATERFRONT

\$125,000

Cozy 3 bedroom cottage with stone fireplace on Boot Cove. Bright and sunny, build your own dock or good anchorage available. Call...

DON PIPER 539-2121

RARE CLIFFSIDE LOT

Fantastic view over San Juan Islands. Driveway and hydro ready to build. 2/3 acre level lot. \$79,500. Call...

DON PIPER 539-2121

TUMBO CHANNEL WATERFRONT

Low bank with private beach. Cottage almost finished. Seasonal moorage. Close to fishing grounds. \$119,000. Call...

DON PIPER 539-2121



TOP OF THE HILL

\$149,000

The best of island living...modern home...acreage...view...boating facilities...south facing...fenced gardens...move in ...buy now!!!

DON PIPER 539-2121

LOTS OF VALUE!!!

128 and 130 East Point Road: Close to ferry. .4 acre each, well treed. \$17,000 each.

112 Boot Cove Road: South facing waterfront, lowbank, beautiful arbutus. \$69,000.

111 Payne Road: Two good building sites, garage. Possible view, just like a park. \$18,000.

680 & 682 Tumbo Channel Road: 2 well treed level lots close to beach access. \$18,500 each.

624 Tumbo Channel Road: "Ready to build" driveway, building site, well, hydro, water view. \$22,000.

ISLANDS

Cairn marks Saturna's first public school

Under a brilliant sunny sky on Thursday, September 20, a cairn marking the site of Saturna's first public school was unveiled in the presence of school children, present and former residents of Saturna, and representatives from School

District 64, the Community Club and the B.C. Historical Federation, Gulf Islands Branch.

By LYNNE PIPER
Driftwood Correspondent

Lorraine Campbell, representing School District 64, started the day's ceremony by informing the audience the cairn marks the site of Saturna's first school which was in operation from 1919 to 1941 when it closed for lack of pupils. The school remained closed and in the 1960s the site was sold to the community. It is now the Saturna cemetery.

Lorraine then introduced Bakhshish Gill, Vice-President of B.C. Historical Federation, Gulf Islands Branch, who in turn introduced the distinguished guests for the unveiling of the plaque.

The plaque was unveiled by Ruth (Odberg) Anderson and Nellie (Copeland) Mountain, who were among the first students of the school in 1919/1920.

Other distinguished guests were Mrs. Marjory Narrowway, the last teacher at the school (1939 to 1941), and her husband, Ed. Ed and Marjory lived in the teacherage during the time Marjory taught at the school. Margaret (Ralph) Denham, who was a pupil at the school during the period 1931 to 1940, and Gladys (Fields) Merwin, who lived on

Saturna in the 1920's and took an interest in the school, were also present to enjoy the unveiling and the many memories it must have brought forth.

Another student of the school, Mary Georgeson, also made the trip to Saturna to be present at this ceremony.

It should be noted that Bakhshish was instrumental in instigating the efforts that culminated in the unveiling. It was through his work that donations were received from the Gulf Islands School District, the Community Club and the B.C. Historical Federation, Gulf Islands Branch.

The pad supporting the cairn was poured by Paul DeVeau and the stonework was expertly done by Sonny Thomas.

At the time of the unveiling, Karen Muntean, President of the Community Club, expressed thanks on behalf of the community for the combined efforts of Bakhshish, Paul and Sonny.



Cairn was recently unveiled on Saturna Island

Longtime resident leaves island

Marjorie Davidson came to Saturna Island in 1960 with her husband Tom, who worked for B.C. Television as a technician on the T.V. transmitter on Mt. Warburton Pike.

By LYNNE PIPER
Driftwood Correspondent

Marjorie and Tom homesteaded on Narvaez Bay Road and raised their five children on the island. After Tom's death, in December 1989, Marjorie felt she could not maintain the home, gardens and outbuildings and subsequently sold the property.

Marjorie has settled in an apartment in Victoria and while the islanders will miss her, we do wish her well in her new home.

where she has been visiting friends and relatives!

Kate Maguire sustained a mild concussion as well as cuts and bruises when she was in a serious accident on Sunday, September 30, at the intersection of Boot Cove Road and East Point Road. Kate was travelling towards the ferry dock on her moped when a motorcyclist was unable to stop as he approached Kate and a crash resulted, throwing both Kate and the cyclist from their bikes.

Kate reacted immediately and was able to get help for herself and the cyclist, who was knocked unconscious.

The cyclist caught the late afternoon ferry back to Vancouver where he was treated at hospital and later released and is now recovering. Theresa Reimer accompanied Kate to the emergency ward of the Saanich Hospital on Monday. She is wearing a neck collar and is also recovering from her injuries.

An interesting note here is that although the frame of Kate's moped split in half, Kate was able to get up and seek help immediately after the accident. This may not have been the case if she had not been wearing a helmet.

Residents and visitors to Saturna greatly appreciate the help given during emergencies by people like Geri Crooks, Alf Reynolds, Laura Paul and many more, who have taken the time to complete the Industrial First Aid course.

Welcome to fall

Pouring rain, a late ferry and a hot cup of coffee!

That was the scene on Monday, October 1, when our glorious sunny, warm, late summer weather turned to typical rainy, cold, fall weather.

The lineup for the 7 a.m. sailing to Vancouver/Victoria was becoming longer and longer when Dick Silverberg

came down the line to advise that the ferry was delayed and would not be arriving until 8 a.m.

This caused anxious moments to many people who had appointments, meetings and flight deadlines, but there is little one can do when a delay such as this occurs. However, a cup of coffee at Dick and Gloria Silverberg's new coffee shop was a welcome diversion.

Dick and Gloria, with the help of Lynn Close, opened their coffee shop for the first time on Saturday and the timing was excellent as the cold and impatient people in the lineup welcomed a hot cup of coffee and the congenial company of other stranded commuters.

The coffee shop will be open from now on — check with Gloria about the hours.

Are you on the voters' list?

November 17 is a date to remember. Election for representatives to CRD, Islands Trust, and the Gulf Islands School Board will take place on that date. You can check at the Post Office to make sure you're registered so you can vote on that day.

Jacques Campbell is running for the first time for Regional Director to the CRD for the Outer Gulf Islands, Lorraine Campbell will run again as Saturna's representative to the School Board and Harvey Janzen and John Money will again run for Saturna's representatives on the Islands Trust.

FREE MARKET EVALUATION

For prompt, courteous real estate service
Call PETER LAMB



Office: (604) 537-5577
FAX: (604) 537-5576
Home: (604) 537-4859

GULF ISLANDS REALTY LTD.

P.O. Box 750, Ganges, B.C. V0S 1E0



SATURNA ISLAND NEWS

Series of accidents

During the past week or so, Saturna has seen a number of accidents resulting in injuries to residents and visitors.

On Friday, September 28, during a Lions woodcutting bee, Jack Trickey cut his fingers on a power saw. Jack was immediately attended to by Willie Otto. Until he was able to go the doctor in Sidney, he was under the capable care of Polly Howarth and Geri Crooks. The latest report is that he is doing well and it will take time for the fingers to heal. (Healing will surely accelerate once Hazel returns from her trip to Winnipeg

MOVER

"THE LOCAL MOVING COMPANY"

Regular return trips to Ontario.
Special low rates to Salt Spring

Call MCCULLY'S LONG DISTANCE



OPPORTUNITIES

A rare and affordable opportunity to live in popular Brinkworthy Place. 770 sq. ft. single wide home, centrally located, includes 2 bedrooms, living room with corner wood heater, separate dining room or den, full bathroom, carport and storage building. 5 appliances included. Ideal for single person. Hurry it's only \$42,500.

OR

1320 sq. ft. double wide on nicely landscaped lot, 3 bedrooms, large living room and family room, 1½ baths, jacuzzi room and tub, carport and storage shed. \$64,000.

ISLANDS

Your Garden



CHRIS SCHMAH

There is a certain coolness in the air which stimulates outdoor activity and moves us to make preparations for the winter ahead. As a result, the chores of October are timely topics for this article.

With all of this ongoing clean-up frenzy, it's time to go over your perennial borders and annual beds, removing weeds, spent plants, foliage, and finished blooms to make fodder for the compost, as well as reduce disease and insect problems. Do a good raking and leaf gathering, then consider liming and topdressing with manures or mulch.

This is a good month for lifting, dividing and replanting all of your spring and summer-blooming perennials, always remembering to incorporate some bonemeal and compost. The late bloomers such as fall-blooming anemones and chrysanthemums should be left alone until spring. This is prime time for lifting, dividing and replanting any overcrowded lily-of-the-valley beds, taking care to choose a rich well-drained soil in a partially-shaded location.

Montbretia or crocosmia are best off if divided this month also. You may still undertake to divide your peonies this month, remembering to include the manure-enriched, deeply-prepared soil with bonemeal added in, and the one-inch planting depth.

It should go without saying, but fall is for planting, as shrubs, trees and groundcovers all fare better when planted at this time of year. This is also the prime month for planting fall bulbs, for cheery, colourful rewards next spring. All bulbs excepting tulips, which should be planted later in November, will develop full root systems over the next few months and be ready for their spring showings.

For biennials and perennials this is a good time for planting wallflowers, broomrape stocks, primulas, forget-me-nots (myosotis), Aubretia, Arabis, yellow alyssum, English daisies (belli), Sweet Williams, winter pansies, violas, foxgloves (digitalis), and Canterbury bells campanulas, all the while remembering to use some bonemeal.

Reduce overabundant top foliage

There have been a couple light frosts in some locations, so it won't be long before a good hard frost makes it necessary to lift the dahlias, calla lilies, tuberous begonias, canna lilies, and other tender bulbs. Reduce the overabundant top foliage by cutting back the stems to leave eight inches or so, and relocate them to a dry, frost-free location. As they dry out, clean them by removing dead foliage and any dead roots along with the soil.

For most, the stems will die right back to the tuber surface, but for the dahlias you should only cut back to leave four inches of stem and avoid any risk of damage. After they are fully dry, store them in bags, boxes or flats, covered with, and separated by peat moss, in a location that is dry, and 45 to 50 degrees F.

For those tender plants such as gazania, impatiens, fibrous begonias, blue felicia, trailing verbenas, geraniums, fuchsias, and ice plants, you will have to lift them roots and all, cut back their foliage and roots to make them manageable and then relocate them to a well-ventilated, fairly sunny, frost-free spot. Check on them every week or two and remove botrytis or mould-infected tissues, and water them only enough to keep them going.

In the vegetable garden the first job is to clean up and compost or turn under all spent plant materials and do your liming if needed. Cut down the yellowing tops of your asparagus plants and burn the prunings to control insects and diseases, then topdress the beds with a couple inches of manure or seaweed. This is your last opportunity to plant fall vegetables such as brussel sprouts, broccoli, cabbage, cauliflower and kale, always mixing in a handful of lime in each planting hole to combat the club root fungus, and ensure vigorous growth.

Leek transplants may be set out this month, and garlic should definitely be planted out in October, as they will develop full root systems over the course of the winter and be ready for spring. Choose a sunny location that has rich, well-drained soil with some bonemeal or rock phosphate mixed in and then set out the cloves one inch deep and six inches apart. You may still sow out some radishes, spinach, mustard greens, and corn salad this month.

Not too late to plant new lawn

Your globe artichokes should be lifted and divided this month to expand their numbers and to enable you to replenish the soil. Cut away the suckers arising from the crown, and replant them in a manure-rich sandy soil in a sunny location. In any unused beds or areas, sow down a cover crop of fall rye, winter wheat, winter peas, vetch or any combination thereof to reduce erosion and build up soil organic matter content. You might consider topdressing the garden with manure or seaweed, and then turn it under to allow the soil organisms to break it down and create a richer soil for next year.

The lawns will have to be raked clean as the leaves fall, because the matted dead foliage can smother and kill the underlying grass. Give them a final mowing on a dry day and apply lime at rates up to 20 kg per 100 sq meters (45 lb/1000 sq ft). A fall-winter fertilizer will go a long way toward improving the grass' strength, disease resistance, and winter hardiness. If you want to plant a new lawn, there is still time, as the soil is warmer than

PROVINCIAL ROUNDUP

By Hubert Beyer

Mel Smith packs it in

After 30 years with the British Columbia public service, Mel Smith Q.C., last serving as deputy provincial secretary, is calling it quits.

For 20 years, ending in March, 1987, Smith served as the senior advisor to four British Columbia successive premiers on constitutional matters and federal-provincial issues.

During that time, Smith represented the province at all constitutional conferences, in significant constitutional legal cases, on Law of the Sea issues, in aboriginal negotiations and on provincial fisheries and off-shore resources negotiations.

Smith, 56, says he will pursue his interest in constitutional and other public policy fields and in government affairs. His last day on the job will be Oct. 31, the 13th anniversary of his appointment as a deputy minister.

Hydro project review

The environmental, social and economic impacts of Princeton Light and Power's proposed Similkameen River hydro-electric project will get a thorough review, Energy Minister Jack Davis said last week.

Princeton Light and Power, a private electric utility, plans a 15-megawatt project to increase the long-term security of supply to its consumers. The company now buys wholesale power from West Kootenay Power and distributes it to 2,435 customers.

More timber, fewer jobs

Even though timber harvest levels are higher than ever before, 4,500 jobs were lost in the forest industry last year, NDP leader Mike Harcourt said last week.

Blaming the government for this imbalance, Harcourt said the Socreds allowed the industry to cut back on jobs in virtually all 180 forest licences in place in B.C., while chalking up record profits.

"They said to forest companies . . . don't worry about jobs in return for timber. You can close or cut back operations as you want," Harcourt charged.

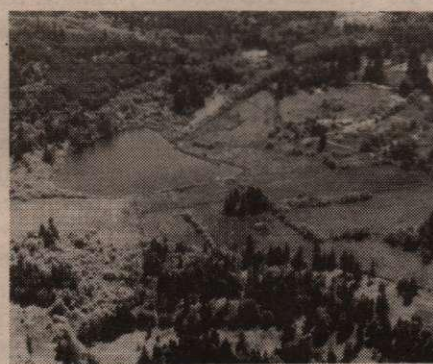
"Every company holding long-term cutting rights can now walk away from its responsibility to forest workers, their communities, and to our province. The cosy deal between the current government and forest companies has allowed Ainsworth Lumber to walk away from its responsibility to the town of Lillooet, taking with it 175 jobs," he added.

"There's a billion dollar market out there, and thousands of new and sustainable B.C. jobs for the taking, if we had a government that tied jobs to lumber. Instead of exporting raw logs and using good saw logs for pulp, we should produce specialty-wood products and high-value paper right here in B.C. for export to Europe, Japan and the United States," Harcourt said.

Crossword Solution

TAD		NFR		ORAL
OREO		ELL		LANE
GILL		FAU		DECI
ALIDA		GREW		
		PRE		BRIDLE
LACOMBE		AYAIL		
ILLS		OLE		ELLA
MEETS		MISSION		
PEOPLE		NIL		
		OYEZ		TABER
KIWI		RED		KATA
ERIN		IRE		ERRS
GATT		EON		REP

MERESIDE FARMS LTD.



158 acres of spectacular farmland with 2000 ft. frontage on stocked trout lake. Cleared meadows, delightful building sites, irrigation rights, southern slope, great potential.

\$1,400,000 (Can)
Vendor financing available

Call Anne Foerster
537-5156 (Home)



PEMBERTON-HOLMES
(GULF ISLANDS LTD.)

156 Fullford-Ganges Rd.
P.O. Box 929
Ganges, B.C. V0S 1E0
Phone (604) 537-5568



OUTER ISLAND PROPERTIES

For free maps, NRS catalogues and general real estate information, please contact:

NRS MAYNE ISLAND REALTY LTD.
(including Saturna)

Carol Kennedy — 539-2606
Diana Lodge — 539-5227
Glen McLeod — 539-2719

NRS GALIANO ISLAND REALTY LTD.

Rosemary Callaway — 539-2515
Jill Hansche-Penny — 539-5896
John Ince — 539-2559



NRS SALT SPRING REALTY LTD.

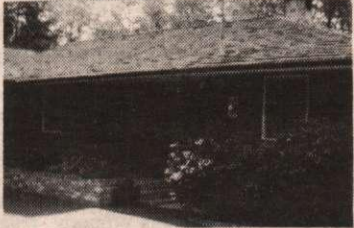
149 Fulford Ganges Road

P.O. Box 69, Ganges, B.C. V0S 1E0

Telephone: (604) 537-5515 Fax: (604) 537-9797

Victoria Direct: 656-5554 Vancouver Direct: 278-5595

LOVELY TO LOOK AT WITH OCEAN VIEW



Two-bedroom home tastefully decorated. Low maintenance gardens frame paved driveway. Brick heatilator fireplace, deck with glass panelled railing for viewing trees and ocean. Two bathrooms (3 pce & 4 pce ensuite), storage/workshop. Includes washer and dryer and new stove and refrigerator. .93 acre. Asking \$149,000 MLS.

EXPANSIVE OCEAN VIEW GLORIOUS SUNRISES



This pretty three-bedroom new home situated on .67 acre features fireplace, two bathrooms, sundeck and modern kitchen. Partially finished daylight basement includes workroom and plumbing for third bathroom. Double carport is high enough to accommodate an R.V. Ocean views of the Trincomali Channel and Wallace and Galiano Islands. \$149,900.

BEAUTIFUL SEMI-WATERFRONT



This lovely, treed building lot is indeed a rare find. Directly across the road from the beach, this property enjoys panoramic views over the Trincomali Channel to Galiano Island. Driveway access from either Wescott or Walker's Hook Roads. Water system, hydro and cable available at lot line. .69 acre. \$82,900.

PRETTY ISLAND HIDEAWAY



One-bedroom home nestled among trees in a pocket of sunshine shows as new. Brick fireplace, skylights, glass patio doors to decks off both living-room and dining-room make nice contributions to this little treasure. Wired for central vacuum system and cable. 15 gpm well. .80 acre. \$109,900.

SHELLY ROBERTSON
653-4347

SUNNY NORTHEAST ACREAGE

Close to St.Mary lake, Fernwood School District. Nicely treed, south-west sloping 4.27 acres. Roughed in driveway and several good building sites. Split zoning R & W1. \$47,000.

INEXPENSIVE BUILDING LOT

Walker Hook recreational .72 acre lot. Extensive road frontage. Short

HERITAGE HOME



This 1916 Heritage Home with an established B & B is set on a large parcel of 17.42 acres of very arable land. There are approximately 65 fruit trees, barn, outbuildings, fir and oak floors, 2 fireplaces and much, much more. \$289,000.

BEAUTIFULLY FINISHED HOME IN THE COUNTRY



New 3 bedroom house with large living room, kitchen, plus an extra family room. Carport and deck, looking out into a private, sunny 1.97 acres. Offers to \$145,000.

GOOD VALUE FAMILY HOME FOR THE GARDENER



3 bedroom rancher .75 acre with established garden at rear. Approximately 17 fruit trees, offers to \$118,900.

LAKEVIEW ACREAGE WITH SOME VENDOR FINANCING



One of the few acreages with a view in this price range. Bring your offers to \$59,000.

Call
MARION MARKS
537-2453

PANORAMIC SEAVIEW CHALET



Magnificent sunsets and safe sandy beach close by. Brand new. Wood shingle roof, hardwood floors. Buried wires. 2 bedrooms plus studio. Arbutus trees frame the wonderful view. \$164,500.

\$84,500 SUPERIOR BLDG. LOT

Exclusive development area with impressive future, & has become preferred area of Salt Spring. Vendor will build to suit. (Minimum floor area 1400 sq.ft.) Large 1.40 acre lot with parklike setting.

NEW LISTING - VESUVIUS



Meticulous home located on a secluded 1/2 acre lot in the heart of Vesuvius. Fully fenced with numerous outbuildings. The property has been landscaped to perfection - fruit trees, rhodos, stone planters and more. For the growing family this small home would be very easy to add on to and comes complete with wood burning stove for the winter and lots of decks for summer enjoyment. \$110,000 MLS.

NEW LISTING - \$79,900

Renovated two bedroom home on very private 1.8 acre. Lots of south facing decks, wood burning stove, good well, four appliances. \$79,900 MLS.

TWO INDUSTRIALLY ZONED PROPERTIES



4200 sq.ft. of leasable space in four year old building. Rare zoning in a commercial/industrial area. \$219,500. PLUS:

Across the street from the above, 3.5 acres being rezoned to commercial service area. Lots of permitted uses! Plus 1200 sq.ft. residence! \$275,000.
NORMAN ROTHWELL
537-5515

PARKER ISLAND



10 acre waterfront properties, priced from \$57,500, terms available. These lots are selling fast, don't miss this opportunity!

CHANNEL RIDGE



Seaview lots, fully serviced, priced from \$54,500, terms available, southern exposure, nicely treed, driveways roughed in.
SEAVIEW ACREAGE



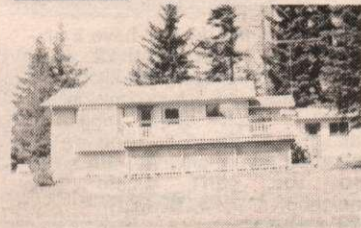
2 five acre lots, good seaviews, wells, power, phone, driveways, wooded, secluded, priced at \$75,000 and \$85,000.

MEL TOPPING
537-2426

HOBBY FARM

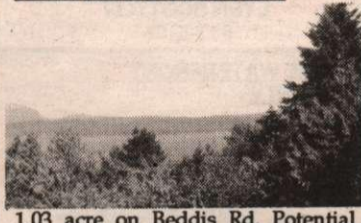
14.9 acres of agricultural land, fenced and cross fenced. Barn with hay loft and other outbuildings. Trout creek runs through the property. Close to Vesuvius and Ganges. A perfect place to build your home. Asking \$135,000.

SUNNY SOUTH WESTERLY EXPOSURE



Beautifully finished 2 bedroom home. Must be seen to be appreciated, on one acre of fenced property. \$139,700.

POTENTIAL OCEANVIEW



1.03 acre on Beddis Rd. Potential view photo taken from adjoining property. Services at lot, water, power. Sandy beach. Vendor financing available. \$45,000.

Call
JIM SPENCER
537-2154

NEW CABIN!



Close to lake and village, completely self-contained, on water system, features 480 sq.ft. of practical space, with full bath. Situated on treed 5 acre + lot, 1700' of creekfront. Very private. Asking \$105,000.
NEAR RUCKLE PARK!



Nestled amongst tall trees on a secluded 5 acre park-like property is this Victorian style home. Fenced in garden, large pond, etc. Come and enjoy the tranquil south end. \$195,000 MLS.

VERY AFFORDABLE WATERFRONT



Choice Secret Island, waterfront lots, ideal for your get-away cabin, serviced with water, excellent building sites, fantastic marine views. Only \$38,000 each. MLS.

LIANE READ
537-4287
Pager:388-6275 (#1042)

CLOSE TO TOWN



224 King Lane, neat as a pin, 3 bdrms with attached garage, large detached 28' x 31' storage, garage/hobby area with a large loft,

POTENTIAL LAKEVIEW

1.16 acre with possible view of St.Mary Lake. Serviced with power, water, cable, on a quiet cul-de-sac. Vendor financing available. \$45,000.

DREAM MAKER



At an affordable price, 115' of beachfront with path to a quality 3 bdrm home, offering excellent privacy, a moorage float, safe beach, close to ferry terminal. Only \$219,000 MLS.

CIRCLE THIS ONE!



Well maintained family home with seaviews, lovely parklike 1.08 acres with separate garage & workshop, greenhouse, large sundecks. Spacious kitchen. Close to lake and all amenities. Asking \$154,500 MLS.
LOCATION! CONDITION! PRICE!



Here's all 3, sunny location, extremely well built family home, with lots of extras. Priced to sell at \$149,900. Showing by appointment only.

PAUL GREENBAUM
537-5064

***** NEW LISTING - WATERFRONT *****



Panoramic marine environment & 51 steps to a 211' shell beach. \$219,000 MLS.
PRICE REDUCED TO \$87,000.

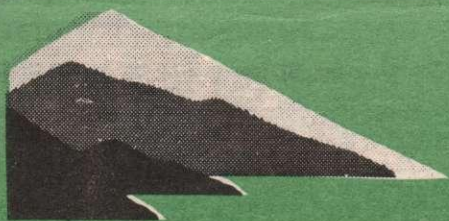


Strata Duplex, 2 bdrms & ocean vista, MLS.

***** WATERFRONT ACREAGE *****



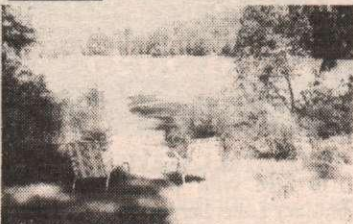
Private, safe moorage, close to Island facilities, from \$200,000 MLS.



GULF ISLANDS REALTY LTD.

P.O. Box 750, Ganges, B.C. V0S 1E0 PHONE (604) 537-5577
FAX (604) 537-5576

PUT YOURSELF IN THIS PICTURE



This older well-maintained 2 bedroom cottage is sited almost at the water's edge on Booth Inlet. There are good views down the inlet and wonderful summer sunsets. The land is flat, nicely treed, and very gently sloping to the water. There are a number of useful outbuildings which complete this exceptional retreat property. \$150,000 MLS.

GANGES HARBOUR VIEWS PRICE JUST REDUCED

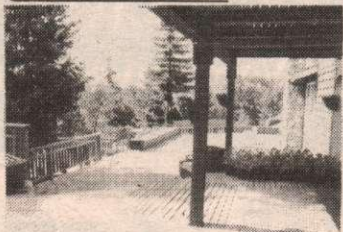


Conveniently close to Ganges and with harbour and mountain views, this very well maintained 2 bdrm home is set in a nicely landscaped garden, there's a range kitchen, a spacious livingroom/diningroom area, a good sized sun deck, room for development in the basement, and a fenced garden area for dogs. Price just reduced \$129,900, \$124,900 MLS.

CALL DAVID DUKE
653-4538
MLS GOLD AWARD WINNER

We Recycle

LET'S HAVE A PARTY



And this is the deck to have it on - it's some 24' long and 22' wide. There's a huge gourmet kitchen, 3 bathrooms and 3 bedrooms in the 3200 + sq.ft. home, which is attached to the deck. And it's all sited on a very private 6 3/4 acres so you can't disturb any neighbours! \$375,000 MLS.

SEASONAL CREEK & FERNS

On a park-like .67 acre lot in area of fine homes. Excellent soil for garden enthusiasts. Serviced with hydro, water and cable. \$38,000 MLS.

LYNN SCOTTON
537-5186

UNIQUE WATERFRONT PROPERTY



Gracious Salt Spring Island home, located on a peninsula of land approximately 3 acres with 1500 ft. of waterfront. Caretaker/guest cottage, boat dock, with foreshore lease, sunny, private yet close to village, a rare opportunity. \$895,000 MLS.

CALL SANTY FUOCO
537-2773

NEED SOME ELBOW ROOM?



3 bedrooms, 1-1/2 bathrooms up and an extra bdrm, huge family room and bathroom down. Large breakfast area off kitchen plus area dining. 2 full fireplaces. Almost 2500 sq.ft. for a growing family. \$127,000 MLS.

DONNA REGEN, CGA
537-2845

SUPERB VIEW ACREAGE - \$105,000



24 plus acreage, very private, several building sites, well. Very much in its natural state, good road to view site.

SUNSET DRIVE WATERFRONT



Private with superb views - moor your boat off this low bank property - enjoy the swimming or the tranquility of the one bedroom main house with its large living/dining room with fireplace, along with its 1100 sq.ft. guest wing. \$365,000 MLS.

S.S.I. LIFESTYLE AT ITS BEST!!



- * west coast contemporary home
- * hardwood floors, woodstoves, in-ground solar heated pool
- * 1100 sq.ft deluxe workshop (barn?)
- * 600 sq.ft. cottage with loft, basement
- * 6.6 acres, s.exp., pasture, forest \$279,000 MLS

FULFORD WATERFRONT



Live in the older 2 bedroom cottage while you build on the glorious building site with S/W exposure and a fabulous view right down Fulford Harbour. A 20 x 30 workshop with an artist's apartment above situated on the waterside of this .67 acre split by the road, adds solid value to this property, priced at \$159,000 MLS.

INVESTORS and CREATIVE THINKERS



Might find this property of interest. 8.20 acres which includes one + acre zoned Industrial 3, the balance of which is rural. The industrial portion is undeveloped so there is the opportunity to generate more income. The property has an income of \$1700 per month produced from rental of duplex, guest cottage and workshop. This property could be made to pay its own way.

Asking \$203,000 MLS
For details call
HENRI PROCTER
537-4273



PEMBERTON HOLMES (GULF ISLANDS) LTD.

537-5568
P.O. Box 929, Ganges, B.C.
156 Fulford-Ganges Road
Victoria Direct Line 652-9225 Fax 652-9225

1887 - 1990
103 years
as your
good
neighbour!
1887 - 1990



UNIQUE REGINALD HILL RARE OPPORTUNITY 1.45 ACRES

- \$399,000 MLS
- spectacular ocean views
- tasteful decor throughout
- private master suite
- hot tub and sauna
- multi-level decks,dbl garage
- Call Maggie Smith or Phyllis Fetherston



100 HILLS AREA - VIEWS! SUPERBLY MAINTAINED HOME

- \$205,000 MLS
- 3 bdrms plus den
- large family room
- wrap around decks to enjoy views
- easy level access - lots of sun
- Call Carol Fowles



NORTH END FARM ACREAGE TRINCOMALI CHANNEL VIEWS

- \$195,000 MLS 5.1 ACRES
- well built & insulated 2 level
- plus guest cottage now rented
- 15000 sq.ft. deer fenced garden
- spring fed pond - bright, sunny
- over 40 mature fruit trees
- Call Arvid or Kerry Chalmers



ST.MARY HIGHLANDS NEW HOME NEARING COMPLETION

- \$175,000 MLS
- Japanese style - lots of glass
- covered decks,wood floors
- quiet,sunny lot adjacent to wooded park area
- private,yet close to amenities
- Call Arvid Chalmers



CLOSE TO TOWN GREAT FAMILY HOME!

- \$159,000 MLS
- 4 bdrms,dbl car garage
- completely fenced back yard
- large rec room
- 28 x 22 covered sundeck
- cul-de-sac
- Call Phyllis Fetherston



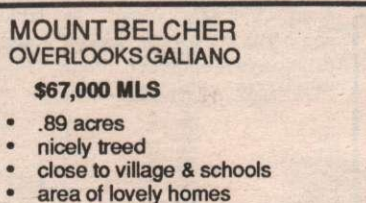
FULFORD VILLAGE OCEAN VIEW HOME \$149,000 MLS

- superb location - walk to village
- shopping & ferries
- bright & sunny
- large studio area
- see this today
- Call Arvid Chalmers



BEST BUY WATERFRONT SUNNY LOCATION

- \$139,000 MLS
- tidal waterfront
- cute 2 bdrm cottage
- great get-a-way
- excellent retirement
- Call Maggie Smith



MOUNT BELCHER OVERLOOKS GALIANO

- \$67,000 MLS
- .89 acres
- nicely treed
- close to village & schools
- area of lovely homes
- Call Phyllis Fetherston

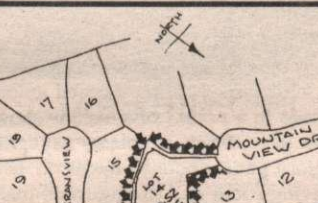
CHANNEL RIDGE OCEAN VIEW LOT

- \$79,500 MLS
- 1.9 acres treed
- very private,easy building
- prestigious area
- gentle sloping lot
- Call Phyllis Fetherston



GARDENER'S DELIGHT VIEWS OF GANGES HARBOUR \$135,000 EXCLUSIVE

- immaculate 2 br & den bungalow
- close to village
- numerous outbuildings
- sunny & private lot
- excellent well
- Call Maggie Smith



MOUNTAIN VIEW DRIVE PRESTIGIOUS BUILDING LOT \$55,000 MLS

- 1/2 ac overlooks Sunset Dr. farms
- access off Mt. View cul-de-sac
- water, hydro, phone & cable
- Call Wynne Davies

SPECTACULAR VIEWS 30 ACRES ON MT. BELCHER \$275,000 MLS

- 2 spring fed ponds
- roads lead to building site
- 1177 sq.ft. building in place
- for use as caretaker home

PRIVATE TRANQUILITY CONVENIENTLY LOCATED \$84,000 NEW PRICE! MLS

- 6 sunny acres off cul-de-sac
- farmland,lake,& ocean views
- build your dream home here
- roughed in driveway to site

SEAVIEWS AND SUNSHINE VESUVIUS VIEW ACREAGE \$79,000 MLS

- 1.42 private acres
- easy access to building site
- area of fine homes
- water,hydro and cablevision

NEAR LAKE & SEA LEVEL FULLY SERVICED LOT \$50,000 MLS

- extra large 0.58 acre
- near school,store & beach
- minimum sewer hook-up charge
- level fully serviced lot

BOOTH CANAL HALF-ACRE BUILDING LOT \$39,900

- easy to build on
- piped water,hydro & telephone