

PALM DAIRIES

One of Victoria's oldest dairies—celebrates its **1st ANNIVERSARY** at

GANGES VILLAGE MARKET

- ★ Only the freshest dairy products
- ★ Excellent quality Ice Cream products

- ★ 100% satisfaction guaranteed
- ★ Excellent weekly features!

SUPPORTING LOCAL ISLAND FARMERS!

SALE
PRICES
IN
EFFECT

APRIL
21st
THRU
28th

BIG DIPPER ICE CREAM

4 litre
pail

Limit 2 pails with
a \$50 order or over

2.99

Additional quantities — **3.68** each
(or on less than \$50.00 order)

GOLDEN GROVE

APPLE JUICE

1 litre ctn.

SAVE
59¢

68¢

PALM • Revellos • Fudgsicles
• Popsicles • Creamsicles

SAVE 41¢

Ice Cream Novelties

1.48
6 PACK

PALM

Creamed or 2%

Cottage Cheese

500 g
tub

1.44

PALM

SAVE 31¢

Sherbet

All flavours—1 litre ctn.

1.68

PALM

500 ml ctn.

Half & Half Cream

84¢

OREO

• Chocolate
• Vanilla

SAVE 41¢

Ice Cream

1 litre ctn.

2.48

All
Flavours

LIFESTREAM

YOGURT

SAVE
81¢

1.68

500 g
tub

PALM
FRESH

1 litre ctn.

Buttermilk

98¢

YOP

Yogurt Drink

200 ml btl.

SAVE 11¢

76¢

PALM

Cheddar Cheese

• Mild
• Medlum
• Mature

ALL 10% OFF

**PRODUCT
DEMONSTRATIONS.
THURSDAY, FRIDAY
& SATURDAY**

PALM

Soft Margarine

2 lb. tub

SAVE
31¢

1.68

GOLDEN GROVE PURE

Pineapple Juice

1 litre ctn.

SAVE
37¢

1.28

EXCEPT FREE MERCHANDISE OFFERS,
 & ADVERTISED SPECIALS
EVERY MONDAY
DOUBLE YOUR
COUPON VALUE

GANGES VILL

SAVE 42¢

DEL MONTE
Hawaiian
Juices

2 250 ml ctns. **88¢**

NABISCO 600 g pkg.
Shreddies **3³⁸**

NABISCO
Shredded
Wheat 600 g pkg.

SAVE 1.01 **2²⁸**

DEL MONTE In its own juice
Pineapple 14 oz. **98¢**

HILLS BROS.
Instant
Coffee

SAVE 2.21 8 oz. jar **4⁷⁸**

SCHWEPPE'S
Tonic Water
OR Club Soda

SAVE 41¢ 750 ml btl. **88¢**
 plus deposit

VENICE BAKERY FEATURES
 EXTRA CRISP 6 GRAIN
Muffins 6 pack **99¢** **Bread** 675 g **1⁵⁹**

BORATEEM
BLEACH 1.7 kg **2⁵⁸**
SUBSTITUTE
SAVE 57¢

SUNGIANT CALIFORNIA
SEEDLESS
RAISINS 750 g **1⁹⁸**
SAVE 89¢

VALLEY CHOICE
CAT
FOOD 8 kg bag **9⁹⁸**
SAVE 2.00

GLEN VALLEY
 • Cream Corn
 • Green Peas
 Standard Quality
 14 oz. tin **58¢**
SAVE 21¢

SEA HAUL
CRAB
MEAT 60 gram tin **1³⁸**
SAVE 61¢

TRI-V
CAT
FOOD 425 g tin **58¢**
 4 varieties

UNICURE 400 ml btl.
SHAMPOO or **CONDITIONER** **98¢**
SAVE 51¢

MILKO
POWDERED
MILK 2.5 kg bag **12⁹⁸**
SAVE 1.00

E.D. SMITH
CHERRY 19 oz. tin **2²⁸**
PIE FILLER
SAVE 51¢

MELLOW ROAST
INSTANT
COFFEE 6 oz. jar **4⁴⁸**
SAVE 1.21

BRAVO
TOMATO
SAUCE 28 oz. tin **1²⁸**
SAVE 41¢

KELLOGG'S CEREALS
RAISIN BRAN 800 g pkg. **3⁶⁸**
ALL BRAN 575 g pkg. **1⁸⁸**
SAVE 27¢ **SAVE 31¢**

RISE'N'SHINE 3 pack **98¢**
ORANGE
CRYSTALS
SAVE 81¢

LEMONADE PINK or WHITE
Crystals 3 pack **1³⁸**

NEW! DANISH ORCHARD
COMPOTE 375 ml tub **1⁸⁸**
JAMS 8 varieties **3¹⁸**
20% less sugar! 750 ml tub

SALADA 144 pack **3⁸⁸**
TEA
BAGS
SAVE 2.11

PRIOR PARK 100's poly bag **2⁶⁸**
Tea Bags

Clip & Save

44⁹⁶

Based on maximum quantities

VALUABLE CLIP & SAVE COUPON

RAGU OLD WORLD STYLE **Save 83¢**
Spaghetti Sauce
 8 varieties to choose from.
 28 oz. jar **1⁸⁶**
 LIMIT 3 PER FAMILY ORDER
 VALID APRIL 21st THRU 28th

VALUABLE CLIP & SAVE COUPON

SWEETHEART TODDLER **SAVE 3.12**
Diapers
 36 pack **6⁸⁶**
 LIMIT 3 PER FAMILY ORDER
 VALID APRIL 21st THRU 28th

VALUABLE CLIP & SAVE COUPON

FORTUNE **Save 65¢**
Corned Beef
 340 g tin **1⁶⁴**
 LIMIT 3 PER FAMILY ORDER
 VALID APRIL 21st THRU 28th

VALUABLE CLIP & SAVE COUPON

GOLDEN AWARD ALL PURPOSE **SAVE 2.03**
Flour
 10 kg bag **4⁹⁶**
 LIMIT 2 PER FAMILY ORDER
 VALID APRIL 21st THRU 28th

VALUABLE CLIP & SAVE COUPON

BUNDLE BEE WHITE SPRING **SAVE 91¢**
Salmon
 7 3/4 oz. tin **98¢**
 LIMIT 6 PER FAMILY ORDER
 VALID APRIL 21st THRU 28th

VALUABLE CLIP & SAVE COUPON

CARE'S NEW DOUBLE SIZE **SAVE 1.51**
BRETON **Crackers** **1⁹⁸**
 450 g pkg.
 LIMIT 3 PER FAMILY ORDER
 VALID APRIL 21st THRU 28th

VALUABLE CLIP & SAVE COUPON

NEW PURINA BURGER CRUNCH **SAVE 6.01**
Dog Food **10⁹⁸**
 6 kg bag
 LIMIT 2 PER FAMILY ORDER
 VALID APRIL 21st THRU 28th

VALUABLE CLIP & SAVE COUPON

BECEL **SAVE 86¢**
Margarine
 2 lb. tub **2⁸⁶**
 LIMIT 3 PER FAMILY ORDER
 VALID APRIL 21st THRU 28th

VALUABLE CLIP & SAVE COUPON

INGERSOLL **SAVE 1.13**
Cheese Spread **3¹⁶**
 500 g jar
 LIMIT 3 PER FAMILY ORDER
 VALID APRIL 21st THRU 28th

VALUABLE CLIP & SAVE COUPON

M & M **SAVE 1.04**
Candies **2⁹⁴**
 • Plain
 • Peanut
 453 g bag
 LIMIT 3 PER FAMILY ORDER
 VALID APRIL 21st THRU 28th

WEEKEND MARKET

SALE PRICES IN EFFECT
WEDNESDAY, APRIL 22-
TUESDAY, APRIL 28

FRESH
WHOLE OR SHANK 1/2
PORK PICNIC

99¢ lb.
2.18 kg

FRESH
CUT-UP
FRYERS

Regular Cut,
Whole Gr. A

1.29 lb.
2.84 kg

**SHOP
VILLAGE
MARKET**

FOR QUALITY
AND FRESHNESS!

City Prices in the
Country! All Pork, Beef
& Poultry Gov't.
Inspected.

BURNS
CHICKEN
WIENERS

375 g pkg.

1.29 ea.

**OUR PLEDGE:
DOUBLE
YOUR MONEY
BACK**
if you are not
completely
satisfied

RED BRAND BEEF
GOV'T. INSPECTED
BONELESS
BBQ ROAST

1.99 lb.
4.39 kg

BONELESS
STUFFED
**PORK
SHOULDER**

1.69 lb.
3.73 kg

RED BRAND BEEF
GOV'T. INSPECTED
BONELESS BLADE
STEAK

1.99 lb.
4.17 kg

BURNS
COIL
GARLIC

1.49 lb.
3.29 kg

GERMAN
**EDAM
CHEESE**

2.99 lb.
6.59 kg

MAYFAIR
SLICED
HAM

375 g pkg.
2.99 ea.

FRESH
1/2 FRENCH LOAF
PIZZA

2.39 each

REGULAR
3 to a lb.
**BBQ
PATTIES**

1.59 lb.
3.51 kg

FRESH
ITALIAN
SAUSAGE

1.89 lb.
4.17 kg

FRESH CALIFORNIA

Strawberries!

98¢

basket



Anjou Pears 1.52 kg

69¢ lb.

GOLDEN
Delicious Apples 1.52 kg

69¢ lb.

GREEN LEAF OR ROMAINE
Lettuce

each

69¢

LOCAL
Cauliflower

99¢ each

Book on the Royal Engineers of interest to lovers of history

SAPPERS: The Royal Engineers in British Columbia. By Beth Hill, Horsdal and Schubart.

By FRANK RICHARDS

In 1858, the gold rush came to British Columbia. In that same year, another invasion occurred when a force of some 200 British soldiers was dispatched from England to show the British flag during the practical chores of translating the agreed international boundary from paper to territory.

It was not so much the arrival of the Sappers that became history, although these soldier-artisans shaped the early development of the Pacific province. Rounding out the tale of their work on the coast was the manner in which this miniature army attached itself to British Columbia. Their military tasks completed, the majority of Queen Victoria's soldiers elected to settle in this new province in a new world. It was, after all, a new world, at least in part formed by these very soldier-pioneers.

I find a close sympathy with the Sappers of the Victorian R.E.'s. Some 90 years later there was a

second movement of military personnel over the ocean and across the land when the Commonwealth Air Training Plan went into operation and Canada provided the facilities for training the ever-needed air crews for a war in the air. Thousands of Royal Air Force personnel were shipped out to stations in every province to augment the strength of the Royal Canadian Air Force.

The largest RAF training station in British Columbia was at Sidney, on Vancouver Island. While the numbers were greater than those early British soldiers a century earlier, the numbers who returned to make their homes in this westernmost province were in the hundreds. I was among the hundreds of air force personnel who made their way across the world to inherit, in small degree, some of the benefits already sown by those pioneers. That earlier history was repeated and there has been a generation of 20th century British ex-servicemen taking part in almost every activity in this province so different from and yet so similar to the British Columbia

which attracted the Sappers.

I agree with the author that the term *Sapper* comes from a spade or mattock. The origin of the sapper was military and the sap was a tunnel dug beneath a fortification to gain access. It comes through French from the Latin *sapa*, a hoe. The hoe was used extensively in mining.

The book is not offered as a history of the Engineers in British Columbia, but as a "brief account" of their activities. The author is from Salt Spring Island and has already contributed a number of historical works to the library of British Columbia.

The artist whose sketches are to be found throughout the book is also a Salt Spring Islander, Tim Williamson, and the publishing house, Horsdal and Schubart, is also an island company.

The book will be read with interest by the historically-minded and particularly in those areas so closely linked to the work of the Engineers in this province a century or so ago.

Late night theatre offered

Davis to appear in two plays

Life on the fringes of reality is the subject of two plays to be presented April 24 and 25 at Off Centre Stage.

Staged by Active PASS (Performing Artists of Salt Spring), the plays — *Easy* by Christopher Coe, and *Killer's Head* by Sam Shepard — will be presented both nights under the title *Killing Time*.

The production is directed by Lynda Jensen, and performed solely by Jeremy Davis.

Killer's Head, the ramblings of a man whose destiny is about to change dramatically and irreversibly, was first performed publicly in 1975, Davis said last week.

Author Sam Shepard, Davis noted, is one of America's leading playwrights, with such works as *Buried Child* and *Fool For Love* to his credit. Shepard is also an actor who has played in *The Right Stuff*, *Country*, and other feature films.

Easy, meanwhile, is the tale of

a rich man who has harboured a terrible secret for years.

Davis and other Active PASS members are giving out few details about the production in an effort to create an aura of mystery around it.

"They (the plays) are both a little bizarre, both a little off-centre," Davis said. "They're not your standard family fare, although there's nothing offensive about them. It's just that they look at life from a slightly different perspective."

In keeping with the mystery surrounding *Killing Time*, Active PASS and Off Centre Stage are offering both plays as "late night theatre." The April 24 performance starts at 10 pm, while the following night's showing gets underway at 11 pm.

Davis, who has also been active lately directing his children's play *Give Peace A Chance*, said one-man shows are challenging. He is

looking forward to performing *Killing Time*, which he plans to take to the Vancouver Fringe Festival this year.

"The writing is strong in these pieces," he noted.

The April 24-25 performances of *Killing Time* are part of Off Centre Stage's events agenda to mark its grand opening weekend.

W. E. SMITH

Dentist

537-9611

210 Upper Salt Spring Way
Mail to Box 1209, Ganges, B.C.

Dr. Charles Alsberg, N.D.

NATUROPATHIC PHYSICIAN

Salt Spring Island Health Clinic
2551 Fulford-Ganges Rd.

Tues. & Thurs., 9-5
653-4216 (537-5480)

IMAGIES

HAIR DESIGNS

Specializing in Precision Cuts & Perms

HOURS: TUESDAY TO SATURDAY, 9:30 AM-4:00 PM

Free Consultations.

Call Jacquie Taylor - 537-4012

ACCIDENT-PROOF YOUR CHILD

Red Cross Youth Safety Programs

Ross R. McKinnon B. Comm.

CHARTERED ACCOUNTANT

03B Lancer Building
Lower Ganges Road

(bus.) 537-5646

Mail to Box 575
Ganges, B.C. V0S 1E0

(res.) 537-4159



ROYAL CANADIAN LEGION
BRANCH 92

BURSARY

For Gulf Islands Secondary School graduates of 1987—for further education. Only written applications will be accepted, & must be received by May 15, 1987, at the school or at the Legion.

15-2

Isles West Hot Tubs SPRING SALE!

\$2949 plus tax buys a **COMPLETE** spa package!

LOOK AT WHAT IT INCLUDES:

- 130-gallon spa complete with lounge OR a 170-gallon spa that seats 4 adults
- complete cedar skirt
- Swim Quip 120-volt spa pac - 15.1 amps. Just plug it in! Includes
- 1 hp 2-spd. pump • 25 sq. ft. filter • 1.5 kw heater • GFCI protected
- 4 hydro air jets, skimmer, main drain & all plumbing, labour, delivery

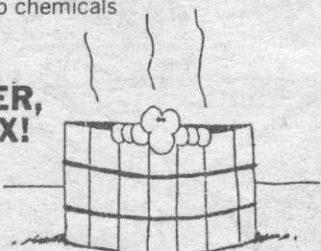
PLUS!

- A 2" sta-warm cover • all start-up chemicals
- Test kit, floating thermometer
- Your choice of spa & cover colours

JUST FILL WITH WATER,
PLUG IT IN AND RELAX!

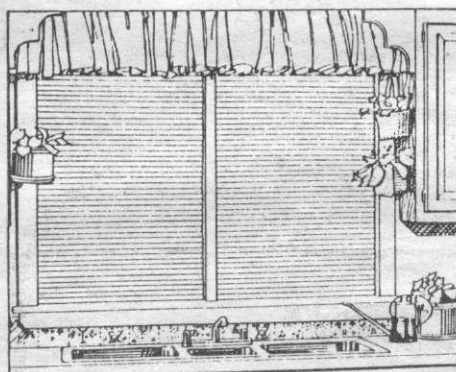
Call now...

653-4513



FASHION UPDATE!

COME SAVE ON ALL THE SHADES OF SPRING!

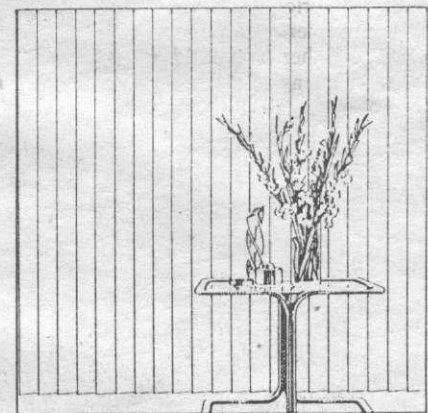


MINI BLINDS

There's not a window in your house that wouldn't look better dressed in the lean, clean lines of one-inch mini blinds. Energy efficient mini blinds—in an entire spectrum of colours, metallics, textures and wood grains—are even more attractive at these special savings!

Mouat's Mall 10-3 Mon.-Sat.

40
percent
off!



VERTICAL BLINDS

Total light control—energy efficient—and totally beautiful vertical blinds. They're as elegant as formal draperies and come in hundreds of colours, patterns and textures. They can even be customized with your own fabric or wallcovering! And right now, during this special sale, they're an even better value than ever!

W ABBEY
WINDOW
COVERINGS

Islander Drapery

537-5837

Island artist Carol Evans works magic with a brush

By MIKE TURKKI

Magic is her stock in trade. Paints are her potions, fine brushes her enchanted wands. She locates subjects among the West Coast landscape, and with rare sorcery commits the essence of each to paper. More than mere art, her paintings are visions captured in watercolour . . .

Carol Evans, a Salt Spring Island painter whose show *The Charlottes — The Land and the People* is currently on display at the Pegasus Gallery, doesn't think of herself as a magician. However, she does admit that art cast its spell over her early in life.

"I've always been interested in it," the 30-year-old, Vancouver-born painter said recently. "My mom always encouraged it . . . I remember that I'd rather do artwork than go to school, and at school, my books had drawings on every page."

Though she now works exclusively in watercolours, Evans didn't always use that medium. Her first works were completed using pastels. At the time, her work was more impressionistic than realistic, too.

"I slowly evolved from doing children's illustrations," she adds. "Gradually, my work became more realistic."

In an effort to learn more about painting in watercolours, Evans enrolled in the University of Victoria's arts program after finishing high school. She left UVic after a year, however, because the university didn't offer the type of instruction she wanted.

"They were teaching abstract painting at the time, and I wanted to paint realistically," she recalls. "Actually, my formal training consists of going to galleries and looking at the art, seeing what other artists are doing. You pick up on the things they are doing, and say: 'Oh, I see how they do that.'"

Although she's always loved painting, Evans says she never expected to make a living at it. "Basically, I did other jobs — waitressing — so I could afford the time to paint."

Evans moved to the Gulf Islands 10 years ago. In the end, her trips to galleries and the hours she spent perfecting her technique paid off: her work sold. Her shows — as many as three a year — grew increasingly successful, too; her first showing at the Pegasus Gallery was initiated in 1985 and, according to gallery owner Yvonne Toynbee, it was "basically a sell-out."



Carol Evans

The West Coast, its scenery and people, provide Evans with ample subject matter for her watercolours. She knows and loves the B.C. coast, and even lived for a time on the Queen Charlotte Islands. Her affinity for the region is evident in her work; each detailed watercolour gives viewers the feeling of almost

being able to smell the damp salt air, touch the lush vegetation.

"I love the coast," she says. "I've seen other places, but they're not the same."

Evans' current show, *The Charlottes — The Land and the People* includes some of her best work to date. Painted from photographs taken during a recent trip to the Queen Charlottes, her pictures reflect the aura of mystique that pervades the islands.

"It's a special place," she says. "The Native Indian people have been living there for generations, for thousands of years. It's their ancestral homeland, not like most of us who have only been here for a while. It's almost as if there are spirits there. When you're out there, it's so quiet — but it's as if you can almost hear something, even though these places are deserted."

Today, Evans no longer has to take odd jobs to support her penchant for painting. She is building a reputation as one of the West Coast's most talented artists; her art is selling well and she recently released her first limited-edition print, *Spirit of the Ancients*.

"Now I have time to paint and do other things, like clean up my house," she says jokingly.

"I still like the coast, so I don't think I'll move on. I'd like to paint more people, particularly people in the environment. I'll stick with watercolours, too. I've tried oils and it was terrible."

The Charlottes — The Land and the People continues at the Pegasus Gallery until April 25. Evans' next show is slated for Vancouver.

World Development Tea

Saturday, May 2 — 1 pm
Ganges United Church

16-2

Humperdink's
By the Sea...

FRIDAY NIGHT SPECIALS!

BEEF STROGANOFF

On a bed of butter noodles with garden-fresh veggies

8⁹⁵

WHOLE CORNISH GAME HEN

Served with brown & wild rice and garden-fresh vegetables

10⁹⁵

For a Great Night Out...

Try

DINING & DANCING

to the mellow sounds of the 40's & 50's... Wear your dancing shoes and spend the evening enjoying live entertainment by "LES FOURI"

Reservations & information

537-4441



OFF CENTRE STAGE

requests the pleasure of your presence at our

Gala Grand Opening

Refreshments - Advance Tickets - Ph. 537-5211

ART SHOW - PLAYS - COMEDY NITE

APRIL 24, 25 7 PM

FULFORD INN

PUB OPEN SUNDAY!

PHONE 653-4432

Dining Room CLOSED for renovations. TRY OUR EXCELLENT PUB MENU— A Complete Meal or a Light Snack.



ROOM RATES — \$25 plus tax

Stay at the head of Fulford Harbour—modern, comfortable accommodation, full bathroom facilities and satellite colour TV. Call 653-4432.

The Chart Room



Fri. & Sat., April 24-25 — 5:30-9 pm

Fresh Panfried Prawns Provencal 10⁹⁵

SUNDAY FOR SENIORS

THE HEAT IS ON AT THE CHART ROOM... 5:30-9 WITH DINNERS PRICED JUST FOR YOU!

Lunch in the Lounge

Served Tuesday-Saturday, 11:30 am-2:30 pm

WEDNESDAY NIGHT JAZZ

Snacks provided — 8-10:30 pm
SSIJS members \$3 non-members \$4

THURSDAY, APRIL 30

Dining Room CLOSED at Lunch only.

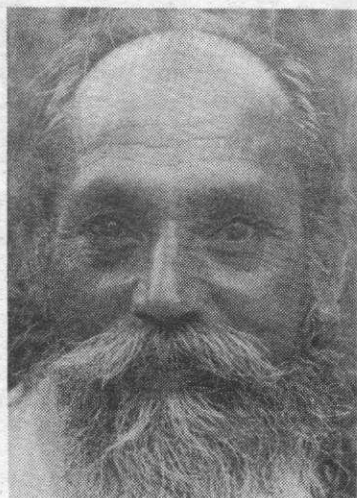
In the pub Fri. & Sat., Apr. 24 & 25

Terry Lewis & the Jack Lords

HARBOUR HOUSE HOTEL

For reservations phone 537-5571

Salt Spring Centre will offer series of yoga programs here



Babi Hari Dass

The Salt Spring Centre will offer a series of yoga programs, with special guest Babi Hari Dass, from May 1 to 10.

Babi Hari Dass is an acknowledged master of the classical system of Ashtanga Yoga, also known as Raja Yoga, a scientific method of enlightenment propounded by the ancient sage Patanjali in his yoga sutras.

Babi Hari Dass has practiced yoga since childhood and observed complete silence for the last 30 years.

A weekend introduction to this yoga system will begin Friday, May 1, at 7:30 pm and include the theory and practice of breath and energy control, purification techniques, meditation, postures

and exercises. Cost for this weekend intensive is \$90 for islanders, including meals.

Beginning Monday, May 4, and continuing until Saturday, May 9, there will be a work/study retreat consisting of morning classes in the Bhagavad Gita and various community work projects at the Salt Spring Centre. There will be a charge for meals only. Evening asana (posture) classes will be held Monday, May 4, and Wednesday, May 6, at 7 pm, and are open to the public.

On Friday, May 8, at 7:30 pm there will be a public gathering and opportunity for questions and answers with Babi Hari Dass. Everyone is welcome.

Demonstration planned

Tai Chi grand master to appear

A grand master of Tai Chi will visit Salt Spring Island in early May to conduct a workshop and hold workshops.

Grand Master Ta Tchen Tchoung will demonstrate his techniques at the Activity Centre in Ganges on May 2 at 7:30 pm. Tickets, available at *et cetera* and Volume II Books, are \$3 for individuals and \$4 for families.

On May 2 and 3, also at the Activity Centre, a workshop in Tai Chi will be conducted. The fee is \$50. Contact Thommas Miychaude (537-4175) for registration information.

Tai Chi is a Chinese art which uses graceful movements to relax both body and mind "in order to cultivate the internal energy or life force called *Chi*," Miychaude says. *Tai Chi* means the supreme ultimate or the grand ultimate.

Tai Chi was developed by Chang San Feng, a Taoist monk who lived from the end of the 13th century to the beginning of the 14th century.

The symbol of Tai Chi is the Yin and Yang which, in turn, symbolize the interaction between the positive and negative. "An understanding of this interplay leads one to appreciate the value of softness and yielding in life situations instead of resistance, aggression and brute force," Miychaude says.

"The circular and flowing movements of Tai Chi provide the way to gather energy (*Chi*)," he continues. "The practitioner is asked not to use force or tension and to relax totally. In this way, the practitioner does not lose life force even in a very advanced

age. The aggressive use of power will, in contrast, drain the user of life force."

Miychaude says he knows people whose practice of Tai Chi has cured various ills — including arthritis, nervousness, bad backs, heart problems and lack of energy.

Grand Master Ta Tchen Tchoung will arrive for the Salt Spring sessions from Vancouver, where he has taught Tai Chi in since 1972. Born in China in 1911, he learned and taught Tai Chi in China, Burma, India and Hong Kong before establishing a school in Taiwan in 1960.



Golden Island

Chinese Restaurant — Licensed

Eat in Or Take Out

LUNCH Tues.-Fri. 11:30-2

DINNER Tues.-Thurs. 5-10

*Fri.-Sat. 5-11; Sun. 5-9

LUNCH SPECIAL your choice · 4.25

CLOSED MONDAYS

Upper Ganges Centre, Ganges 537-2535

HOSPITALITY PAYS
BE A TOURISM
AMBASSADOR

DJ's Maliview Pizza

HOME DELIVERY (ONLY)

PIZZA
BAR-B-Q BEEF RIBS DINNERS
BAR-B-Q CHICKEN DINNERS

FREE DELIVERY GANGES & NORTH
Small delivery charge to other areas
537-5022

NOW OPEN 7 NIGHTS A WEEK

HOURS: Sunday thru Thursday, 5-12
Friday & Saturday, 5-2

April Afternoon

An Afternoon of Fine Music

A BENEFIT FOR THE
Salt Spring Festival of the Arts

Sunday, April 26th 2:00 pm
Mahon Hall

Music By:
THE SALT SPRING SINGERS
CHRIS KODALY & DWAIN PROSK
DIANA DEAN, MADGE KIMBALL,
LILLIAN SLANINA

ELEGANT DESSERTS TEA, COFFEE

ADMISSION: \$5 regular \$4 seniors & unemployed

Tickets at et cetera



SEAFOOD!
at Vesuvius Bay

SEASIDE KITCHEN
Licensed

NOW OPEN!

Call 537-2249

Dagwood's Cafe

**Hooray, hooray, the 1st of May—
Summer hours start today!**

and the
**RETURN of the ORIGINAL
SALT SPRING PIZZA!**

Not to mention our great regular menu—
**7 am-9 pm daily
LICENSED**

We have take-out too!

537-9323
UPPER GANGES CENTRE
(or just follow the locals!)



SALT SPRING PLAYERS host

"HIGHLIGHTS '87"

SOUTH ISLAND ZONE ONE-ACT FESTIVAL

**Thurs., Apr. 30: "DOCK BRIEF"
"LOSERS"**

**Fri., May 1: "GRACELAND"
"PRIVATE EAR"**

Adjudicator: E. (Ted) Price

(best production going on to B.C. Finals)

theatre

bc

**8 pm
Mahon Hall**

Tickets at
et cetera
537-5115

Play has some problems, however

Lovers presents interesting format

By GARY CHERNEFF

On Saturday night, Salt Spring Players concluded their final performance of *Lovers*, a play by Brian Friel.

Lovers presents us with an interesting format which offers opportunities for comparison and counterpoint. The play is really two one-act plays which deal with a common dilemma — relationships threatened by moral approbation and rectitude.

In the first installment, titled *Winners*, two commentators provide news reports outlining the history, life and times of the characters, a youthful couple trying to deal with a rushed marriage brought on by — surprise — a pregnancy.

It is obvious that although both people often reiterate their devotion, their apprehension over what the future may hold catapults them into antagonistic roles. The degree of their anxiety is fully understood when we learn that each has misgivings about their own parents' relationships.

As the dialogue progresses the commentators reveal life situations for both that are less than ideal. The news reports gradually reveal that the couple have most probably taken their own lives together rather than face the perceived grim future they are unprepared for.

The second part, titled *Losers*, introduces us to a couple courting at mid-life. Both are ecstatic over adrenalin rushes and are delighted that such feelings are still possible. But, enter mother, invalid but dominant, willing to risk her daughter's chance at life in order to remain secure until she passes. Her daughter, Hannah, eventually succumbs to duty and sacrifice and the flame flickers out.

In each instance, we are

art seen

presented with the passion of individuals struggling with the constraints of society. Pretty basic stuff — but a theme on which endless variations are possible.

All this sounds like serious drama and I think the play is. But the Salt Spring Players, I fear, made too light of something which demands more sober treatment.

In the first section, GISS student Paula Marcotte plays Mag surprisingly well and with great enthusiasm. Unfortunately, her part is hampered by a somewhat wooden performance by her opposite, Michael Hyde. The direction here is lacking, for the dialogue is rapid-fire with no chance to be digested.

The impersonations of local

characters by Hyde are unconvincing and self-conscious. Mr. Hyde would do well to work on playing the part rather than on playing to the audience.

The lighting in the first part is particularly unimaginative. The stark back-drop is full-lit and works against more intimate moments. One does not need elaborate sets to create mood, but competent lighting is essential.

The second part of the play was handled ably by Alan and Susan Wyatt, although it too suffered from superficial attention to the serious issues. Their wild embraces and passionate groping led me to think they were playing themselves as much as they were playing the characters. Very entertaining.

Humour is uplifting, particularly as counterpoint to well-constructed dramatic movements. These are sadly lacking. However,

Dawn Luker played the supporting role of Mrs. Wilson exceptionally well, considering the overall lack of vision in this production.

A little more introspection and a little less frivolity would go a long way toward improving the performance of this play.



TRADE UP OR DOWN
Lawn Tractors
Full Line In Stock

AJAC'S Equipment (1982) Inc.
160 Cliff St., Nanaimo 754-1931
WE HAVE A GOOD SELECTION OF USED RIDING LAWN MOWERS.

7-thr
MORNINGSIDE ARTS & CRAFTS
FULFORD HARBOUR

Complete selection of handcrafted gifts.
Open Fri., Sat. & Sun., 10 am-4 pm

VESUVIUS INN

Entertainment this Fri. & Sat., Apr. 24-25
Louise Escallier

The Inn Kitchen
EXTRAORDINARY PUB FARE
Open daily noon-8 pm; Fri. & Sat. till 9 pm.
NOW OPEN TILL 8:00 PM SUNDAYS TOO!

537-2312

Informative advertising helps lower the price of goods.

CANADIAN ADVERTISING FOUNDATION

THE SALE

YOU'VE BEEN WAITING FOR

WE HAVE BEEN TOLD —TO—
CLEAR-OUT ALL OLD INVENTORY NOW
NOBODY BUYS THEIR NEW CARS FOR LESS THAN JIM PATTERSON

ALL NEW TRUCKS
DIESELS, 4x4's, LONG BOXES, EXTRA CABS, 4x4's, VANS & RUNNERS, LANDCRUISERS

UP TO **\$1000⁰⁰** OFF PLUS
25% OFF FACTORY INSTALLED OPTIONS PLUS
5 YEAR - 1000,000 KILOMETER WARRANTY - NO CHARGE
SAVE UP TO \$2600

—PLUS—
FABULOUS **SAVINGS** ON ALL NEW CARS!

TOTAL USED VEHICLE CLEAR-OUT
EVERY USED VEHICLE MUST BE SOLD TO MAKE WAY FOR NEW INVENTORY
MANY VEHICLES BEING SOLD **BELOW WHOLESALE**

THE RIGHT DEAL — RIGHT NOW!

MEIRO TOYOTA DUNCAN
CALL TODAY
6529 TRANS CANADA HWY. DUNCAN, B.C. Dealer 6290-A
746-5111

Warm & Cozy...

995 ISLANDER SPECIALS!
OPEN 7 DAYS A WEEK
RESERVATIONS REQUIRED
Join us for EASTER BRUNCH
SUNDAY—11:00-1:30

Bay Window Restaurant!
537-5651

- **PENDER ISLAND**
Correspondent: Eleanor Harrison, 629-3230
- **SATURNA ISLAND**
Correspondent: Priscilla Janszen, 539-2591
- **MAYNE ISLAND**
Correspondent: Peter Hlady, 539-5089
- **GALIANO ISLAND:**
Correspondents: Basil and Kathlyn Benger, 539-5702

Gulf Islands Driftwood

Outer Islands Section

Subscription & Advertising Information:
Call toll free:
1-800-663-5530



An early photo of artist Irving Sinclair and his wife Julette with the painting *Bay Bridge*. Sinclair, who grew up in the Outer Islands, became a successful West Coast painter.

A sampling of Sinclair's art to be displayed at Galiano hall

By **BASIL and KATHY BENDER**

Last week's column featured sport — this week's is dominated by art. To be more specific, painting.

Irving Sinclair Art Show

At the turn of the century a school teacher on Mayne and later Galiano had six children. One of these, a boy called Irving, liked to draw and paint. On leaving school he earned his living for several years painting theatre posters with vivid portrayals of actors' faces. After an art course in New York, he migrated to San Francisco and became well known for his life-size portraits of mayors, generals and film stars.

Periodically he visited his childhood home, Galiano, and asked local people to sit for him — Archie and Rosemary Georgeson, Mary Harding and Fred Robson. He began to paint Galiano land and seascapes, a fine example of which now hangs in the Galiano Post Office. He and his wife Julette built a summer home, Cliff House, on Gulf Drive. On an inside wall, Sinclair painted a mural of the scene outside, complete with CPR ferry.

In his later years he tried

galiano report

abstracts and would hold summer exhibitions in the gardens of Bell House opposite the Post Office or at Galiano Lodge, and then with other local artists in the South Community Hall.

Islanders may remember 20 years ago his distinctive yachting cap and firmly clamped cigar as he drove his open sports car. The last summer holiday on Galiano was particularly poignant for he knew he would never return. His wife Julette, who had written travelogues of Galiano for San Francisco newspapers, intended to

write his biography but she is now, at the age of 87, almost blind and unable to read or write.

Christa Weiss and Margaret Robson have located many Sinclair pictures on Galiano, whose owners have agreed to show them in the South Galiano Hall on Sunday, week of May 3, from 1 to 5 pm. At the same time, Galiano Church will be open so that viewers may see what Irving Sinclair considered his finest work — the crucifixion picture he spent a whole summer painting before it was hung above the altar at St. Margaret's. Members of the Parish Council will be on hand to give information about the painting and St. Margaret's itself.

Turn to Page 26

TRI-K DRILLING LTD.

Serving the Islands since 1966
MOST MODERN HYDRAULIC EQUIPMENT AVAILABLE!
Call collect any time - **478-5064**

GALIANO'S BEST!

LAND: 1-10 acres, starting low 20's. Halfway between Vancouver & Victoria; clean air; pure water; mild climate.
WATERFRONT HOUSES start at \$155,000.
VIEW HOME with self-contained suite \$120,000.

PEMBERTON, HOLMES

Sidney (Ltd.)
656-0911 (24 hrs.)

Joan Callaghan
539-5796

BB BLOCK BROS. REALTY LTD

2449 Beacon Ave., Sidney 656-5584

GALIANO ISLAND

SUNNY AND PRIVATE 750 sq. ft. cottage on 5.85 acs. View building sites on property. Some vendor financing. Offers on \$64,500.

HOBBY FARM with immaculate 3 BR. home plus 825 sq. ft. attached garage/workshop. Greenhouse, outbuildings. Fenced pasture. Very private on 16 ac. \$135,000.

ADJACENT 6 ACRE LOT also for sale at \$45,000
OR MAKE OFFER ON TOTAL PACKAGE.

QUALITY WATERFRONT HOME on 1.51 ac. Deep water moorage plus large workshop. Island living at its best. Vendor financing available. \$195,000.

A GOOD SELECTION OF LOTS FROM \$20,000.

For prompt and professional service, call **JILL PENNY** at 539-5896 or write P. O. Box 252, Galiano, B.C. V0N 1P0.

Capital Regional District NOTICE OF POLL Electoral Area—Outer Gulf Islands

Public notice is given to the electors of the Capital Regional District that a poll is necessary at the election now pending, and that the persons nominated as candidates at the election, for whom votes will be received, are:

SURNAME	OTHER NAMES	OFFICE	TERM	Residential Address	OCCUPATION
RODDICK	Vernon	DIRECTOR	Balance of term to expire in 1987	Boundary Pass Drive South Pender Island	Retired
WRIGHT	Stephen James	DIRECTOR	Balance of term to expire in 1987	R.R. 1, South Pender Island	Cabinet Maker

The Poll will be open at: **Galiano Elementary School** **Mayne Elem./Jr. Secondary School**
Pender Island School, Canal Road **Saturna Island Community Hall**

on the 2nd day of May, 1987 between the hours of 8 am and 8 pm.

An Advanced Poll will be held at: **Capital Regional District offices**
on the 27th, 28th and 29th days of April, 1987 between the hours of 8:30 am and 4:30 pm.

DATED at Victoria, B.C. this 13th day of April, 1987.

T. F. MOORE,
Returning Officer

HARDWOOD

HARDWOOD PLYWOOD

Prices you can afford.

OAKS MAHOGANIES TEAKS etc.

WESTWIND WOODWORK

10230 BOWERBANK
SIDNEY

656-0848